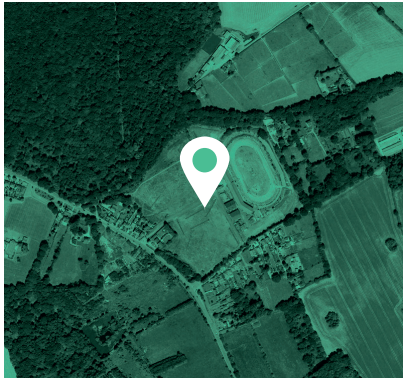


The economic benefits of Coventry Stadium, Rugby Road

The proposed development of 124 new homes, including 20% affordable housing, at Coventry Stadium, Rugby Road offers the opportunity to stimulate economic growth, create jobs, assist in meeting the housing needs of Rugby, add to local authority revenues, and importantly, re-develop the former Speedway Stadium.



The proposal



124 New homes

20% Affordable homes

Other details:

The proposals include the provision of a 3G Sports Pitch, Pavilion for community use, and will deliver a Biodiversity Net Gain.

Construction benefits



£29.3m
Construction value
(total construction cost)



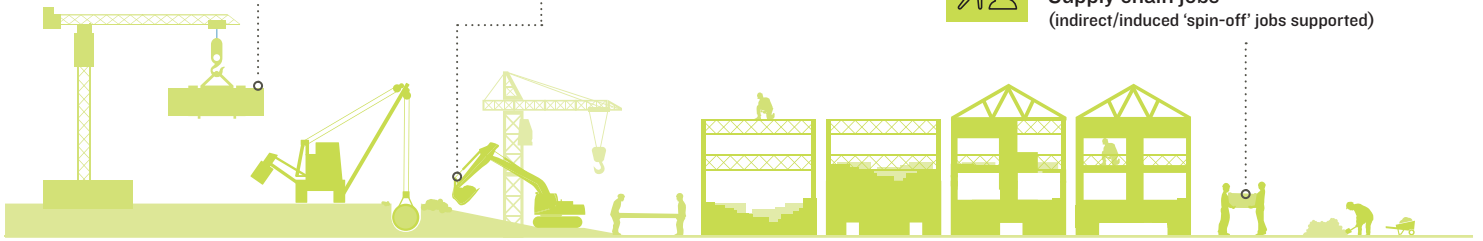
£15.7m GVA
Economic output
(additional GVA p.a.)



105 Jobs
Construction jobs
(temporary jobs over the 20 year build period)



127 Jobs
Supply chain jobs
(indirect/induced 'spin-off' jobs supported)



Operational and expenditure benefits



£682,000
First occupation expenditure
(spending to make a house 'feel like a home')



£257,000
Resident expenditure
(within local shops and services p.a.)



3 Supported jobs
(from increased expenditure in local area)

Local Authority revenue benefits



£557,000
Council Tax revenues
(p.a.)



c.£200,000
Planning contributions
(SI06 or CIL)

