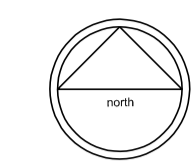






Notes:  
 Drawing based on Ordnance Survey Promap data and is subject to a topographical survey.  
 Contractors to check dimensions and notify any discrepancies or errors to the company immediately.  
 Work to figured dimensions only. Do not scale.  
 © All Rights Reserved.




**Key :**

- Site boundary
- Tarmac circulation area
- Compacted hardcore parking areas
- - - Railings

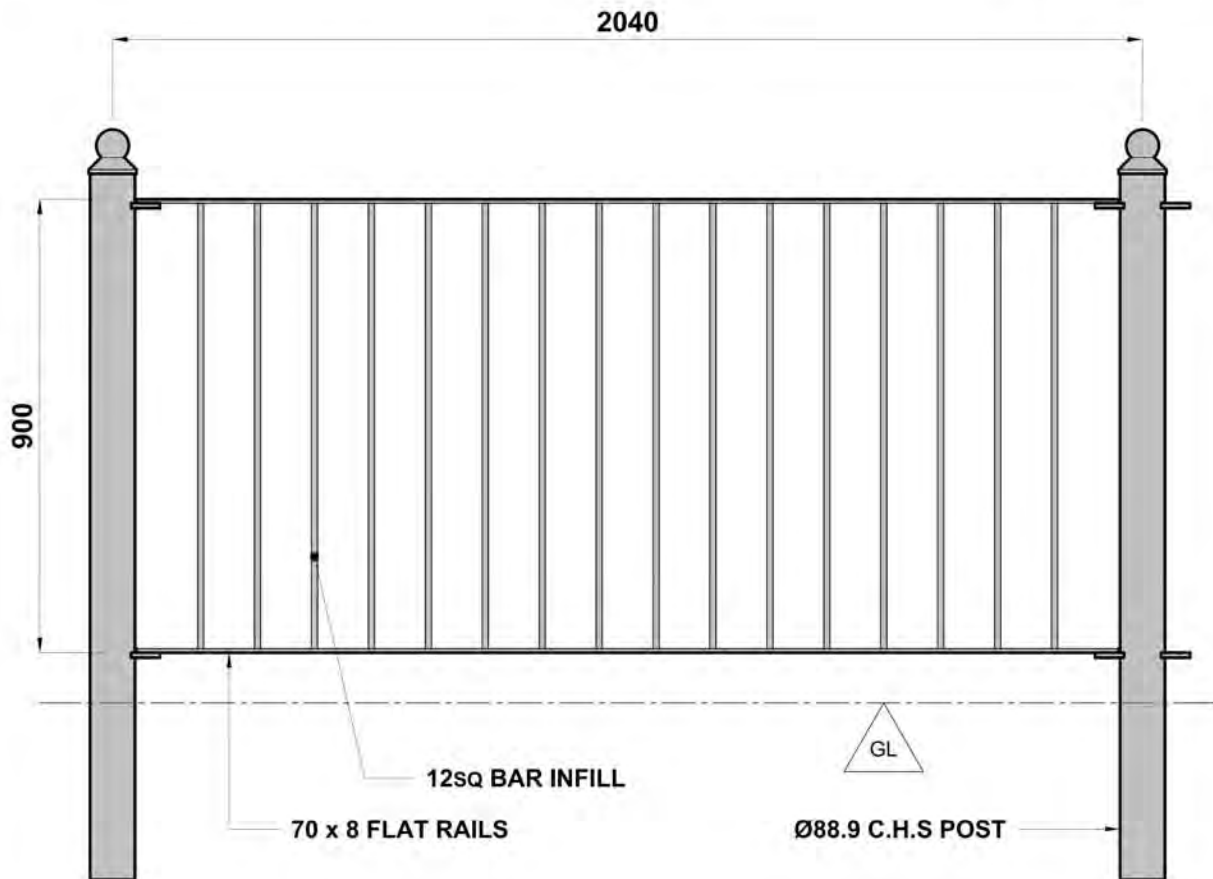
Ordnance Survey, (c) Crown Copyright 2014.  
 All rights reserved. Licence number 100020449



|   |  |
|---|--|
| <br><b>S R DAVIS</b><br>ARCHITECTS<br><small>CHARTERED ARCHITECTS</small><br>Harborne Court<br>67-69 Harborne Rd<br>Edgbaston<br>Birmingham<br>B15 3BU<br>T: 0121 455 9234<br>F: 0121 456 2232<br>E: reception@srdarchitects.com<br><a href="http://www.srdarchitects.com">www.srdarchitects.com</a> | Client:<br><b>Avenbury Properties Ltd</b>                      |
|   | Project:<br><b>North Street Car Park<br/>RUGBY TOWN CENTRE</b> |
|   | Title:<br><b>North Street Car Park Plan</b>                    |
| Drawn: JB    Checked: SRD   | Dwg. No.                      Rev.                             |
| Date: 06.2016    Scale: 1:500@A1  | <b>10144 / SK42</b> <b>B</b>                                   |
| Status: FEASIBILITY   |  |



# Trafford Guardrail Panel



Panel Design and Construction to **BS 7818:1995**

- Standard Finishes :
- i ) Hot Dip Galvanised to **BS EN ISO 1461:2009**
  - ii ) Hot Dip Galvanised and Polyester Powder Coated
  - iii ) Hot Dip Galvanised and Fully Painted

| Panel Description    |                      |
|----------------------|----------------------|
| LD92 Panel ( 28683 ) | LD98 Panel ( 28685 ) |
| LD94 Panel ( 28684 ) |                      |

| Panel Type | Infill Layout | Optimum Sight Angle |
|------------|---------------|---------------------|
| LD92       |               | 2.5° to 5°          |
| LD94       |               | 5° to 14°           |
| LD98       |               | More than 14°       |

Sheet Reference **LD892M** : Issue Number 1.0 : Copyright Fabrikat ( Nottingham ) Ltd 2012





ROBERT STREET  
CAR PARK  
THIS IS A PAY AND DISPLAY CAR PARK.  
PLEASE CLEARLY DISPLAY YOUR TICKET.  
**£0.70** **£3.20**  
Per Hour All Day

A row of parked vehicles including a white van, a red car, a blue car, a black car, a white car, and several other sedans and hatchbacks.

A row of urban buildings, including a brick building with a church spire on the left and several modern, multi-story commercial buildings on the right.





D&M MURPHY

Magis  
Police  
Town

£3.2

















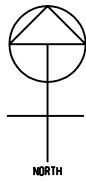
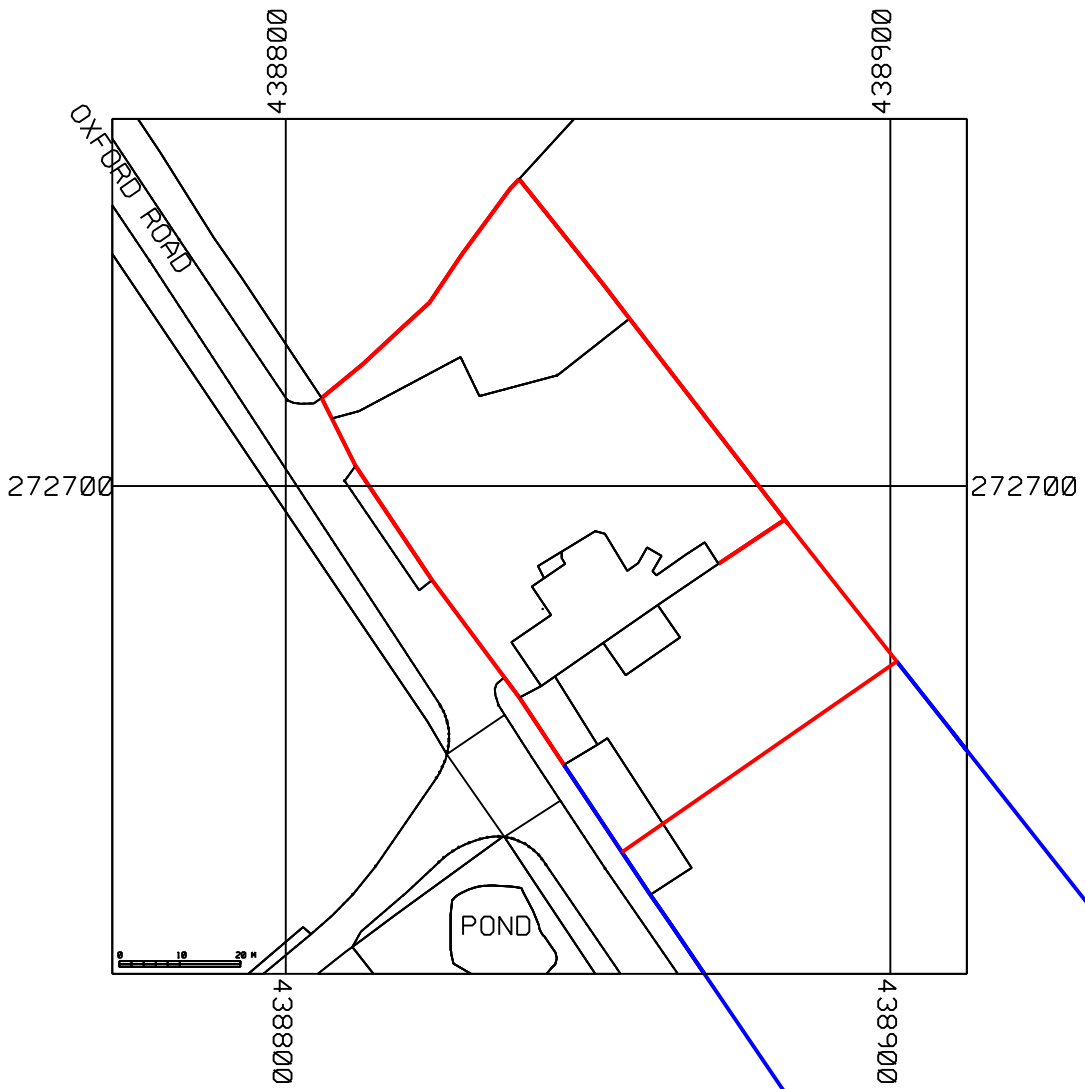












Project

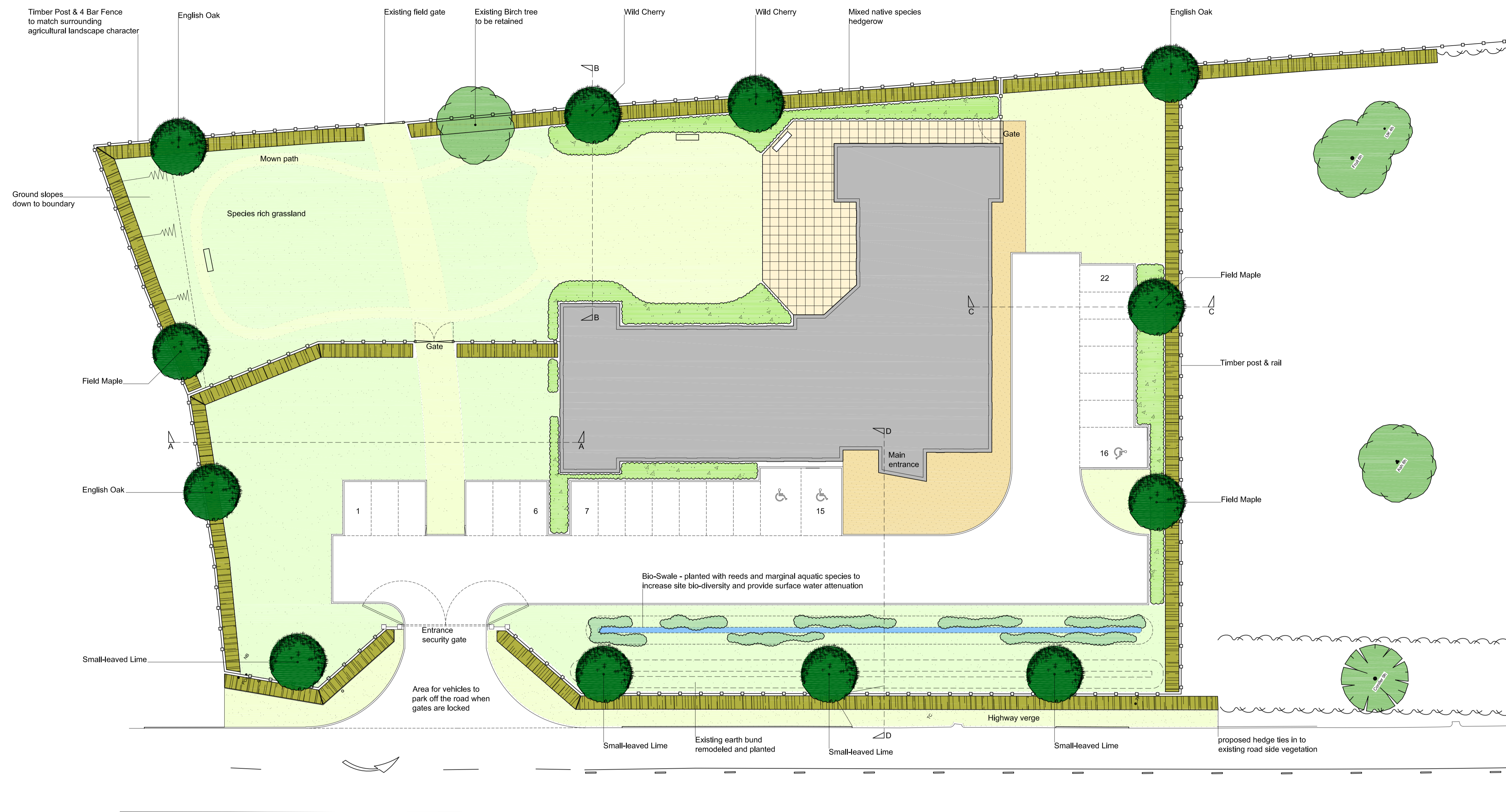
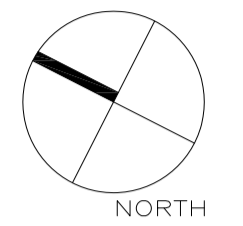
|  |                                    |                            |           |
|--|------------------------------------|----------------------------|-----------|
| <b>CHAPMAN DESIGN LLP</b>  |                                    | <b>REBECCA WALKER RIBA</b> |           |
| <small>           LELSFORD HOUSE<br/>           COVENTRY ROAD, LONG LAWFORD,<br/>           RUGBY, CV35 9DT<br/>           Telephone: 01788 514 831         </small> |                                    |                            |           |
| <b>Class</b>   | PINHOLE DEVELOPMENTS               | <b>Scale</b>               | 1:1250 A4 |
| <b>Job</b>   | FORMER OLD BULL AND BUTCHER, RUGBY | <b>Client</b>              | RV        |
| <b>Drawing</b>   | LOCATION PLAN                      | <b>Date</b>                | JUNE 16   |
|  |                                    | <b>Sheet No.</b>           | 2680-LP   |



NOTES

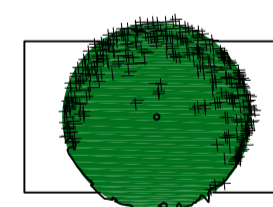
For cross sections, refer to drawing 62-14-GHA-02.

Building footprint taken from Chapman Design LLP, Proposed Ground Floor Plan, drawing no. 2680-01.



A Building updated in line with proposals by Chapman Design. Landscape proposals simplified to create a more open setting. 08/07/16 GH  
REV NOTE DATE AUTH

INDICATIVE SPECIES LIST



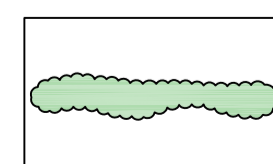
**Extra Heavy Standard Trees**  
Stem girth: 18-20cm  
Height 6m+  
Clear stem 1.8 - 2.1m  
Root: Rootballed  
Species:

- Small-leaved Lime *Tilia cordata*
- English Oak *Quercus robur*
- Field Maple *Acer campestre*
- Wild Cherry *Prunus avium 'Plena'*

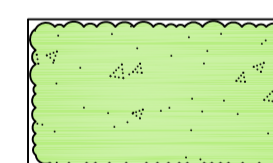


| %  | Species                   | Height (mm) | Age | Root |
|----|---------------------------|-------------|-----|------|
| 10 | <i>Acer campestre</i>     | 400-600     | 1+1 | OG   |
| 10 | <i>Corylus avellana</i>   | 400-600     | 1+1 | OG   |
| 60 | <i>Crataegus monogyna</i> | 400-600     | 1+1 | OG   |
| 10 | <i>Ligustrum vulgare</i>  | 400-600     | 1+1 | OG   |
| 10 | <i>Prunus spinosa</i>     | 400-600     | 1+1 | OG   |

Planted at 450mm centres in a double staggered row. Rows to be 500mm apart. Hawthorn to be planted as a single species at the back of the hedge line, the remainder of the species are to be planted in groups of 5 to 9 in the front row.

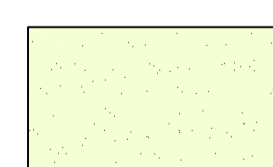


| Species                     | Common Name        | Pot           | Centres | Density |
|-----------------------------|--------------------|---------------|---------|---------|
| <i>Phragmites australis</i> | Common Reed        | 2 litre 500mm | 4no.    |         |
| <i>Phalaris arundinacea</i> | Reed Canary-grass  |               |         |         |
| <i>Carex acutiformis</i>    | Lesser Pond-Sedge  |               |         |         |
| <i>Glyceria maxima</i>      | Reed Sweet-grass   |               |         |         |
| <i>Lythrum salicaria</i>    | Purple Loosestrife |               |         |         |
| <i>Iris pseudacorus</i>     | Yellow Iris        |               |         |         |
| <i>Scirpus lacustris</i>    | Common Club-rush   |               |         |         |

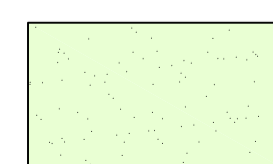


Ornamental Shrubs - below 1m high at maturity

| Species                                 | Height (mm) | Pot (litres) | Centres (mm) | Density (m <sup>2</sup> ) |
|---|-------------|--------------|--------------|---------------------------|
| <i>Artemisia 'Powi Castle'</i>          | 200-300     | 2            | 500          | 4                         |
| <i>Cytisus x praecox x 'Allgold'</i>    | 300-400     | 2            | 500          | 4                         |
| <i>Escallonia 'Apple Blossom'</i>       | 300-400     | 2            | 500          | 4                         |
| <i>Hebe albicans</i>                    | 200-300     | 2            | 500          | 4                         |
| <i>Hypericum x moserianum</i>           | 200-300     | 3            | 500          | 4                         |
| <i>Lavandula angustifolia 'Hidcote'</i> | 150-200     | 2            | 450          | 5                         |
| <i>Lonicera nitida 'May Green'</i>      | 400-600     | 3            | 500          | 4                         |
| <i>Potentilla 'Goldstar'</i>            | 200-300     | 2            | 500          | 4                         |
| <i>Rosa 'Red Max Graf'</i>              | 300-400     | 3            | 600          | 2,6                       |
| <i>Santolinia chamaecyparissus</i>      | 150-200     | 2            | 450          | 5                         |
| <i>Skimmia japonica 'Rubella'</i>       | 100-200     | 2            | 500          | 4                         |
| <i>Spirea japonica 'Firelight'</i>      | 250-300     | 2            | 500          | 4                         |
| <i>Symphoricarpos 'Hancock'</i>         | 300-400     | 2            | 500          | 4                         |
| <i>Viburnum davidii</i>                 | 200-300     | 3            | 500          | 4                         |
| <i>Vinca minor</i>                      | 150-200     | 2            | 450          | 5                         |

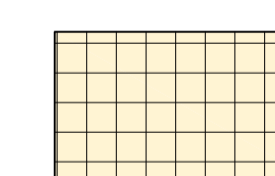


**Amenity Grass**  
DLF Trifolium PRO LANDSCAPE 120: Low Maintenance with Ryegrass  
Additional Clover incorporated in to the mix  
Mown 19 times per year



**Species Rich Grassland**  
DLF Trifolium PRO FLORA 110: General Purpose (Economy Plus Annuals)  
Mown 2 times per year

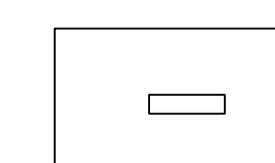
HARD LANDSCAPE



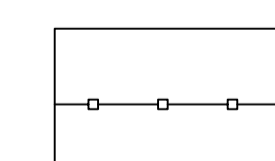
Textured Flags



Resin Bound Gravel



Seat, with back & arm rests



Fence - Timber post & four rail

**guyhollandassociates**  
landscape architects

The Studio | Pear Tree Cottage | North Lane | Weston on the Green | Oxon | OX25 3RG  
t 0189351718 m 07931550922 e guy@gha-landscape.com w www.gha-landscape.com

CLIENT  
**PIN HOLE DEVELOPMENTS**

PROJECT  
**FORMER OLD BULL & BUTCHER RUGBY**

DRAWING  
**LANDSCAPE CONCEPT**

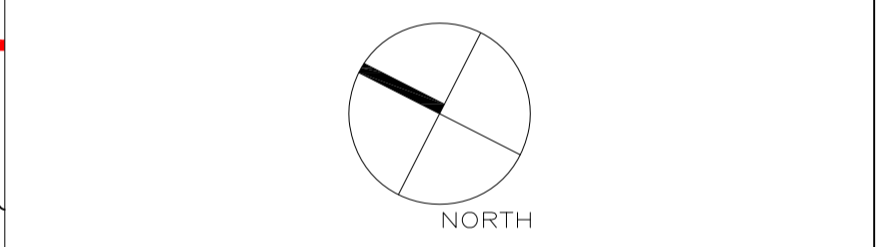
|          |                        |            |          |
|----------|------------------------|------------|----------|
| CONTRACT | L061-14                | DRG NO.    |          |
| DATE     | October 2014           | DRAWN      | GH       |
| ISSUE    | Planning               | CHECKED    | SG       |
| SCALE    | 1:200 @ A1             | ORIG SHEET | A1       |
| CAD FILE | 061-14-GHA-01A+02A.dwg | REV        | <b>A</b> |



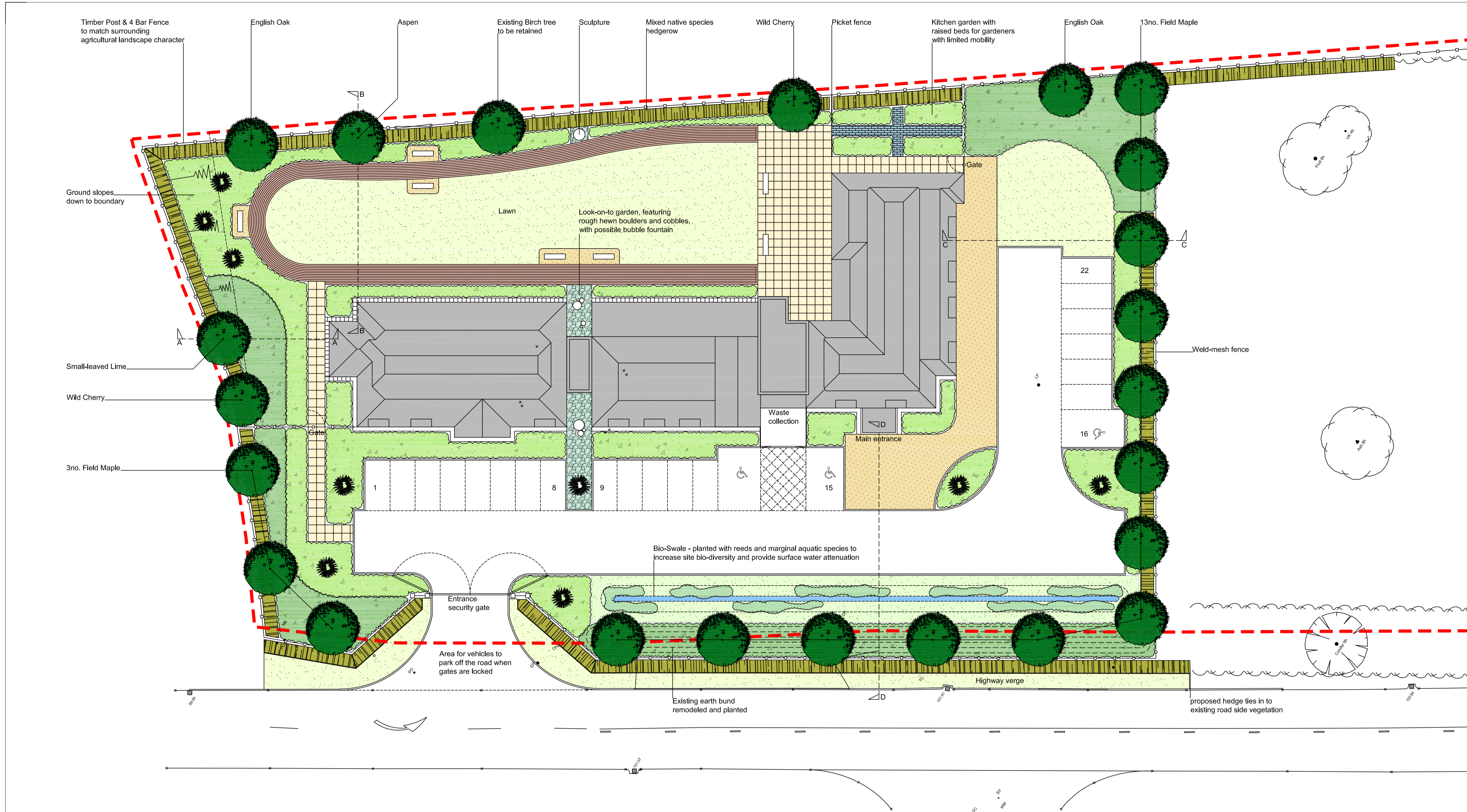
NOTES  
For cross sections, refer to drawing 62-14-GHA-02.

**HARD LANDSCAPE**

- Textured Flags
- Clay Pavers
- Resin Bound Gravel
- Blue Brick
- Cobbles & Boulders
- Seat, with back & arm rests
- Fence - Metal weld mesh
- Fence - Timber post & four rail



REV NOTE DATE AUTH



INDICATIVE SPECIES LIST

**Extra Heavy Standard Trees**  
Stem girth: 18-20cm  
Height 6m+  
Clear stem 1.8 - 2.1m  
Root: Rootballed  
Species:

- Small-leaved Lime *Tilia cordata*
- English Oak *Quercus robur*
- Aspen *Populus tremula*
- Field Maple *Acer campestre*
- Wild Cherry *Prunus avium 'Plena'*

**Native Hedgerow Mix**

| %  | Species                   | Height (mm) | Age | Root | OG |
|----|---------------------------|-------------|-----|------|----|
| 10 | <i>Acer campestre</i>     | 400-600     | 1+1 | OG   |    |
| 10 | <i>Corylus avellana</i>   | 400-600     | 1+1 | OG   |    |
| 60 | <i>Crataegus monogyna</i> | 400-600     | 1+1 | OG   |    |
| 10 | <i>Ligustrum vulgare</i>  | 400-600     | 1+1 | OG   |    |
| 10 | <i>Prunus spinosa</i>     | 400-600     | 1+1 | OG   |    |

Planted at 450mm centres in a double staggered row. Rows to be 500mm apart. Hawthorn to be planted as a single species at the back of the hedge line, the remainder of the species are to be planted in groups of 5 to 9 in the front row.

**Specimen Shrubs**

| Species                                | Common Name        | Height (mm) | Pot (litres) |
|--|--------------------|-------------|--------------|
| <i>Amelanchier canadensis</i>          | Snowy mespilus     | 1200-1500   | 15           |
| <i>Cotinus coggygria 'Rubrifolius'</i> | Smoke Tree         | 800-1000    | 15           |
| <i>Phormium tenax 'Purpureum'</i>      | New Zealand Flax   | 600-800     | 15           |
| <i>Rhus typhina</i>                    | Stag's-horn Sumach | 1000-1200   | 15           |

**Ornamental Shrubs - above 1m high at maturity**

| Species                                | Common Name            | Height (mm) | Pot (litres) | Centres (mm) | Density (m <sup>2</sup> ) |
|--|------------------------|-------------|--------------|--------------|---------------------------|
| <i>Choisya ternata</i>                 | Mexican Orange Blossom | 300-400     | 3            | 600          | 2.6                       |
| <i>Cornus stolonifera 'Flaviramea'</i> | Yellow Barked Dogwood  | 400-600     | BR 1+1       | 750          | 1.7                       |
| <i>Cornus sanguinea</i>                | Common Dogwood         | 400-600     | BR 1+1       | 750          | 1.7                       |
| <i>Fatsia japonica</i>                 | -                      | 300-400     | 3            | 600          | 2.6                       |
| <i>Garrya elliptica 'James Roof'</i>   | -                      | 300-400     | 3            | 750          | 1.7                       |
| <i>Hamamelis mollis 'Pallida'</i>      | Witch hazel            | 400-600     | 3            | 750          | 1.7                       |
| <i>Osmanthus x burkwoodii</i>          | -                      | 300-400     | 3            | 750          | 1.7                       |
| <i>Phalaris arundinacea</i>            | Reed Canary Grass      | 400-600     | 3            | 600          | 2.6                       |
| <i>Phloxia x fraseri 'Red Robin'</i>   | -                      | 400-600     | 3            | 750          | 1.7                       |
| <i>Pieris 'Forest Flame'</i>           | -                      | 300-400     | 2            | 600          | 2.6                       |
| <i>Pyracantha 'Red Cushion'</i>        | -                      | 400-600     | 3            | 750          | 1.7                       |
| <i>Rosemarinus officinalis</i>         | Rosemary               | 300-400     | 3            | 600          | 2.6                       |
| <i>Sambucus 'Sutherland Gold'</i>      | Golden Cut Leaf Elder  | 400-600     | 3            | 750          | 1.7                       |
| <i>Spiraea 'Arguta'</i>                | Bridal Wreath          | 300-400     | 3            | 600          | 2.6                       |
| <i>Symphoricarpos laevigatus</i>       | Snowberry              | 400-600     | 3            | 600          | 2.6                       |
| <i>Viburnum tinus 'Eve Price'</i>      | -                      | 300-400     | 3            | 600          | 2.6                       |

**Bio-Swale Marginal Aquatics**

| Species                     | Common Name        | Pot | Centres | Density |
|-----------------------------|--------------------|-----|---------|---------|
| <i>Phragmites australis</i> | Common Reed        | 2   | 500     | 4       |
| <i>Phalaris arundinacea</i> | Reed Canary-grass  |     |         |         |
| <i>Carex acutiformis</i>    | Lesser Pond-Sedge  |     |         |         |
| <i>Glyceria maxima</i>      | Reed Sweet-grass   |     |         |         |
| <i>Lythrum salicaria</i>    | Purple Loosestrife |     |         |         |
| <i>Iris pseudacorus</i>     | Yellow Iris        |     |         |         |
| <i>Scirpus lacustris</i>    | Common Club-rush   |     |         |         |

**Ornamental Shrubs - below 1m high at maturity**

| Species                                 | Height (mm) | Pot (litres) | Centres (mm) | Density (m <sup>2</sup> ) |
|---|-------------|--------------|--------------|---------------------------|
| <i>Artemisia 'Powi Castle'</i>          | 200-300     | 2            | 500          | 4                         |
| <i>Cytisus x praecox x 'Allgold'</i>    | 300-400     | 2            | 500          | 4                         |
| <i>Escallonia 'Apple Blossom'</i>       | 300-400     | 2            | 500          | 4                         |
| <i>Hebe albicans</i>                    | 200-300     | 2            | 500          | 4                         |
| <i>Hypericum x moserianum</i>           | 200-300     | 3            | 500          | 4                         |
| <i>Lavendula angustifolia 'Hidcote'</i> | 150-200     | 2            | 450          | 5                         |
| <i>Lonicera nitida 'May Green'</i>      | 400-600     | 3            | 500          | 4                         |
| <i>Potentilla 'Goldstar'</i>            | 200-300     | 2            | 500          | 4                         |
| <i>Rosa 'Red Max Graf'</i>              | 300-400     | 3            | 600          | 2.6                       |
| <i>Santolonia chamaecyparissus</i>      | 150-200     | 2            | 450          | 5                         |
| <i>Skimmia japonica 'Rubella'</i>       | 100-200     | 2            | 500          | 4                         |
| <i>Spiraea japonica 'Firelight'</i>     | 250-300     | 2            | 500          | 4                         |
| <i>Symphoricarpos 'Hancock'</i>         | 300-400     | 2            | 500          | 4                         |
| <i>Viburnum davidii</i>                 | 200-300     | 3            | 500          | 4                         |
| <i>Vinca minor</i>                      | 150-200     | 2            | 450          | 5                         |

**Amenity Grass**  
DLF Trifolium PRO LANDSCAPE 120: Low Maintenance with Ryegrass  
Additional Clover incorporated in to the mix

**Species Rich Grassland**  
DLF Trifolium PRO FLORA 12: Water Margin & Pond Edges

**guyhollandassociates**  
landscape architects

The Studio | Pear Tree Cottage | North Lane | Weston on the Green | Oxon | OX25 3RG  
t 0189351718 m 07931550922 e guy@gha-landscape.com w www.gha-landscape.com

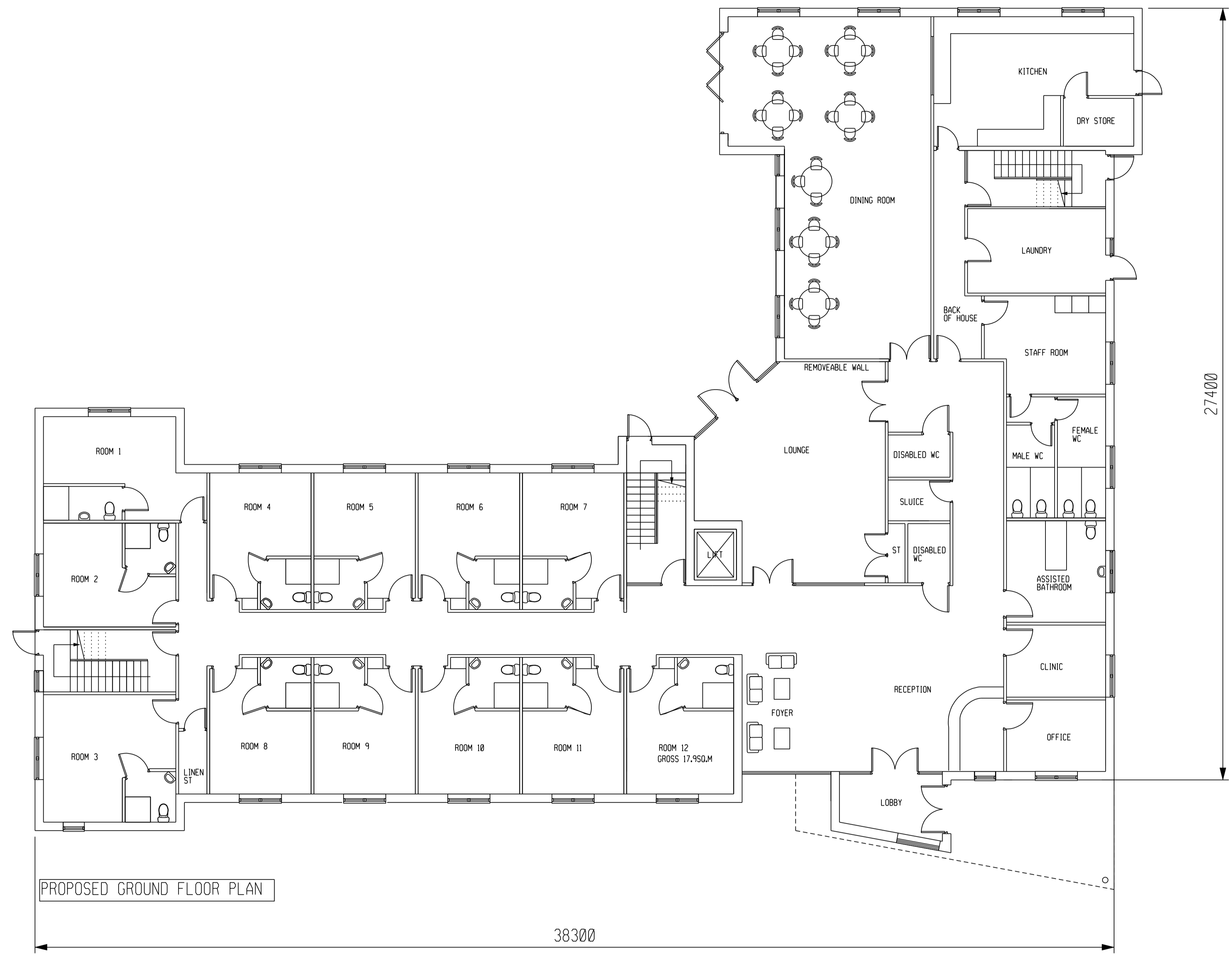
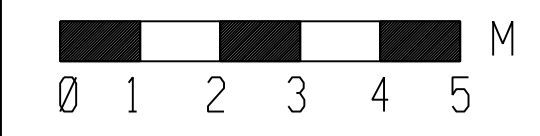
CLIENT

PROJECT  
**FORMER OLD BULL & BUTCHER RUGBY**

DRAWING  
**LANDSCAPE CONCEPT**

| CONTRACT | L061-14           | DRG NO.    | 01 |
|----------|-------------------|------------|----|
| DATE     | October 2014      | DRAWN      | GH |
| ISSUE    | Planning          | CHECKED    | SG |
| SCALE    | 1:200 @ A1        | ORIG SHEET | A1 |
| CAD FILE | 061-14-GHA-01.dwg | REV        | -  |



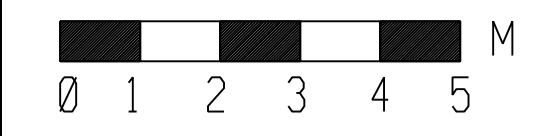


PROPOSED GROUND FLOOR PLAN

**CHAPMAN DESIGN LLP**  
 REBECCA WALKER RIBA  
 LELLEFORD HOUSE  
 COVENTRY ROAD, LONG LAWFORD,  
 RUGBY, CV23 9DT  
 Telephone: 01788 314 821

|                |                             |                |            |            |  |
|----------------|-----------------------------|----------------|------------|------------|--|
| <b>Client</b>  | PINHOLE DEVELOPMENTS        | <b>Scale</b>   | 1:100 @ A1 | <b>Rev</b> |  |
| <b>Job</b>     | FORMER OLD BULL AND BUTCHER | <b>Drawn</b>   | RW         |            |  |
| <b>Drawing</b> | PROPOSED GROUND FLOOR PLAN  | <b>Date</b>    | JUNE 16    |            |  |
|                |                             | <b>Dr. No.</b> | 2680-01    |            |  |



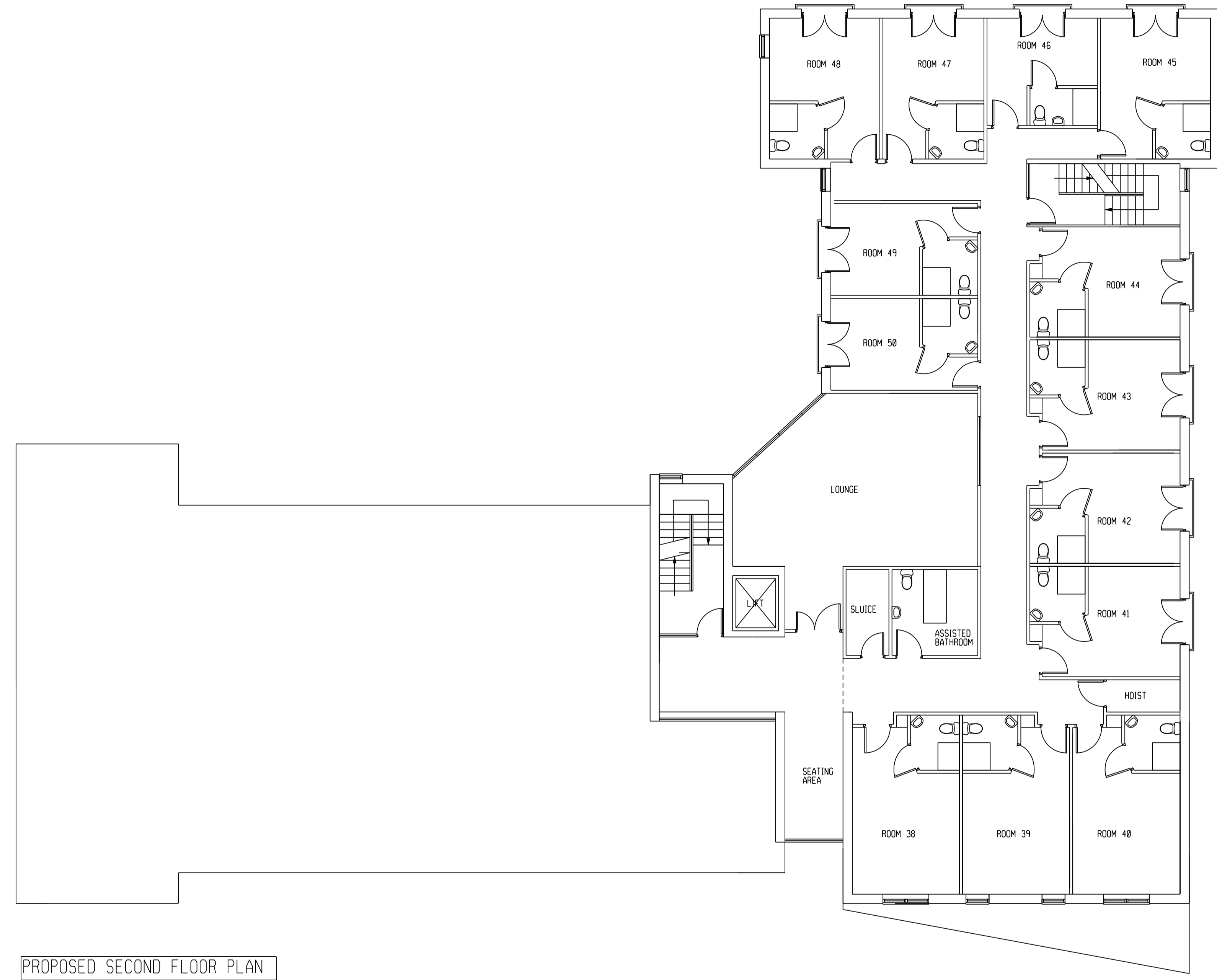


PROPOSED FIRST FLOOR PLAN

**CHAPMAN DESIGN LLP**  
 REBECCA WALKER RIBA  
 LELLEFORD HOUSE  
 COVENTRY ROAD, LONG LAWFORD,  
 RUGBY, CV23 9DT  
 Telephone- 01788 314 821

|                |                             |                |           |            |  |
|----------------|-----------------------------|----------------|-----------|------------|--|
| <b>Client</b>  | PINHOLE DEVELOPMENTS        | <b>Scale</b>   | 1:100 @A1 | <b>Rev</b> |  |
| <b>Job</b>     | FORMER OLD BULL AND BUTCHER | <b>Drawn</b>   | RW        |            |  |
| <b>Drawing</b> | PROPOSED FIRST FLOOR PLAN   | <b>Date</b>    | JUNE 16   |            |  |
|                |                             | <b>Dr. No.</b> | 2680-02   |            |  |





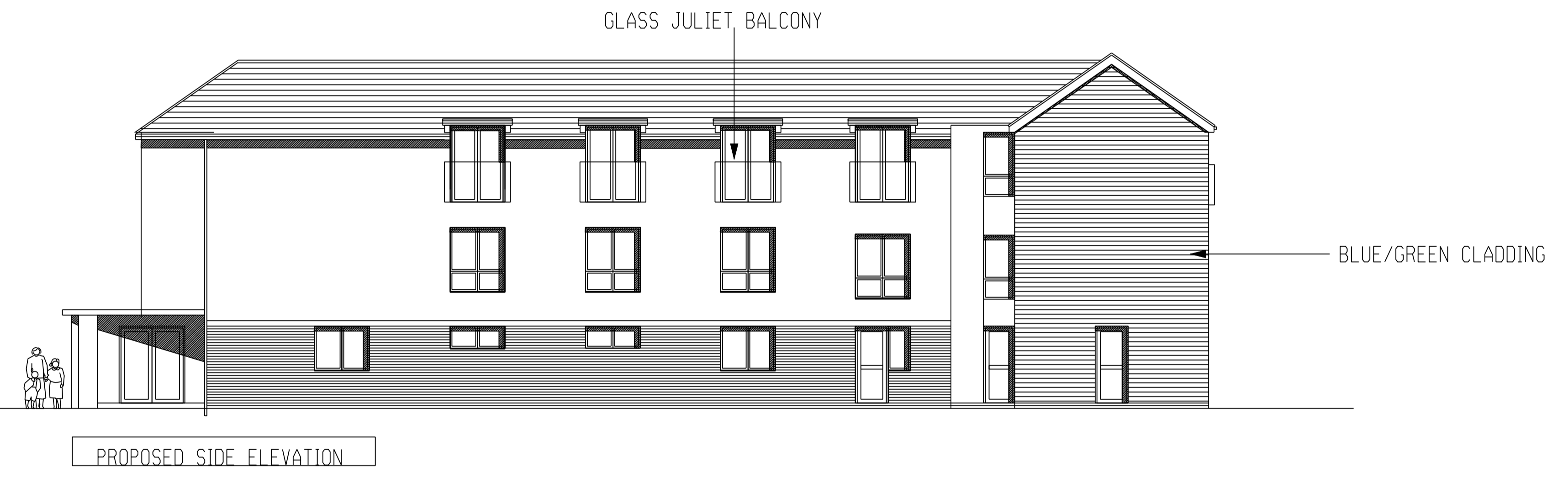
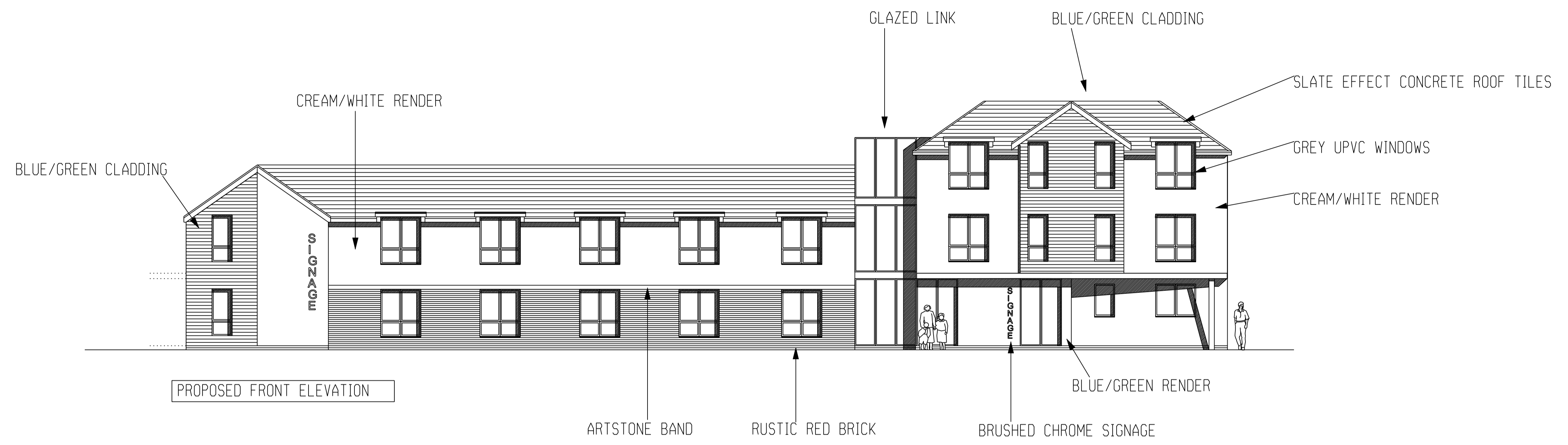
PROPOSED SECOND FLOOR PLAN

**CHAPMAN DESIGN LLP**  
REBECCA WALKER RIBA

LELLEFORD HOUSE  
COVENTRY ROAD, LONG LAWFORD,  
RUGBY, CV23 9DT  
Telephone- 01788 314 821

|   |                        |   |    |            |
|---|------------------------|---|----|------------|
| <b>Client</b> PINHOLE DEVELOPMENTS        | <b>Scale</b> 1:100     | @ | A1 | <b>Rev</b> |
| <b>Job</b> FORMER OLD BULL AND BUTCHER    | <b>Drawn</b> RW        |   |    |            |
|   | <b>Date</b> JUNE 16    |   |    |            |
| <b>Drawing</b> PROPOSED SECOND FLOOR PLAN | <b>Dr. No.</b> 2680-03 |   |    |            |



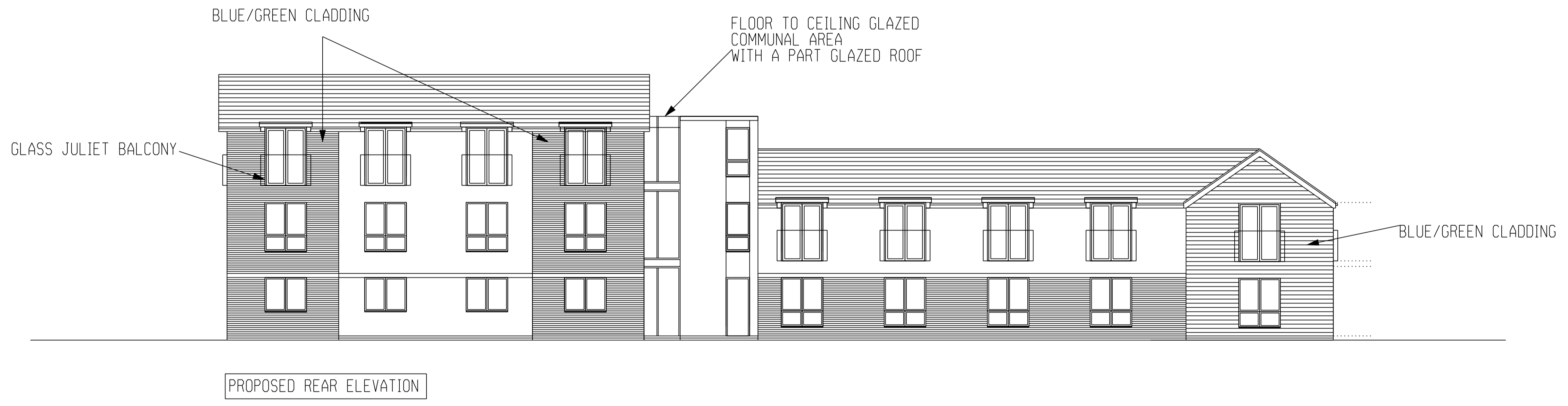


**CHAPMAN DESIGN LLP**  
REBECCA WALKER RIBA

LELLEFORD HOUSE  
COVENTRY ROAD, LONG LAWFORD,  
RUGBY, CV23 9DT  
Telephone: 01788 314 821

|                |                                    |                |            |            |  |
|----------------|------------------------------------|----------------|------------|------------|--|
| <b>Client</b>  | PINHOLE DEVELOPMENTS               | <b>Scale</b>   | 1:100 @ A1 | <b>Rev</b> |  |
| <b>Job</b>     | FORMER OLD BULL AND BUTCHER, RUGBY | <b>Drawn</b>   | RW         |            |  |
| <b>Drawing</b> | PROPOSED FRONT AND SIDE ELEVATIONS | <b>Date</b>    | JUNE 16    |            |  |
|                |                                    | <b>Dr. No.</b> | 2680-05    |            |  |





|   |                                    |                |            |
|---|------------------------------------|----------------|------------|
| <b>CHAPMAN DESIGN LLP</b>   |                                    |                |            |
| REBECCA WALKER RIBA   |                                    |                |            |
| LLELFORD HOUSE<br>COVENTRY ROAD, LONG LAWFORD,<br>RUGBY, CV23 9DT<br>Telephone: 01788 314 821 |                                    |                |            |
| <b>Client</b>   | PINHOLE DEVELOPMENTS               | <b>Scale</b>   | 1:100 @ A1 |
| <b>Job</b>  | FORMER OLD BULL AND BUTCHER, RUGBY | <b>Drawn</b>   | RW         |
| <b>Drawing</b>  | PROPOSED REAR AND SIDE ELEVATIONS  | <b>Date</b>    | JUNE 16    |
|   |                                    | <b>Dr. No.</b> | 2680-06    |
|   |                                    | <b>Rev</b>     |            |





FRONT ELEVATION



REAR ELEVATION



SIDE ELEVATION



SIDE ELEVATION













THE OLD HALL  
&  
BUTCHERY

London Pilsener  
Brewed at the  
Old Hall Brewery

















AN  
T HER







