

MINUTES OF BROOKE OVERVIEW AND SCRUTINY COMMITTEE

12 OCTOBER 2017

PRESENT:

Members of the Committee:

Councillors Claire Edwards (Chair), Mrs A'Barrow, Mrs Bragg, Mrs New, Pacey-Day, Srivastava and Dr Williams

Officers:

Shaun Barnes (Waste and Transport Manager), Penny Abbit (Group Accountant) and Veronika Beckova (Democratic Services Officer)

In attendance:

Nick Andrews and James Andrews (Rugby Youth Council)

13. MINUTES

The minutes of the meeting held on 13 July 2017 were approved and signed by the Chair.

14. APOLOGIES

An apology for absence from the meeting was received from Councillor Cranham.

15. RUGBY YOUTH COUNCIL

The committee received a verbal report from Nick Andrews updating the committee on the work of the Rugby Youth Council (RYC), MYP and VOX. The main points were as follow:

- The annual debating competition took place on 12 October. The following secondary schools participated in the competition: Lawrence Sheriff School, The Avon Valley School and Performing Arts College, Harris Church of England Academy and Bilton School. Harris Church of England Academy won the competition with Lawrence Sheriff School coming in second.
- The main discussion topic was hate crime with the consensus being that hate crime is more prevalent among young people without it being realised.
- The Warwickshire County Council's Hate Crime Unit has supported the debating competition and provided material and freebies to give to schools to raise awareness. The National Hate Crime Awareness Week 2017 runs from Saturday 14 October until Saturday 21 October.
- The schools felt that there was a need to teach young people about the law and where it stands on hate crime particularly.

- The schools also agreed that hate crime is often caused on the basis of religious beliefs and labelling people.
- The county wide Mental Health Conference is set for March 2018. NHS' Child and Adolescent Mental Health Services will deliver a presentation about their new service and diagnostic tool. 7 secondary schools have officially booked with a few more raising interest.
- An art project will be launched shortly to be presented at the Mental Health Conference. The art would be produced by young people and reflect their feelings about mental health.
- The county wide 'One Voice' Public Speaking Competition is taking place over the next few months. The focus is homophobia and the LGBTQ+ community.
- The British Youth Council's Private Member's Bill to reduce the voting age to 16 in parliamentary and other elections (Votes at 16) is expected to have its second reading debate at the House of Commons on 3 November.
- On 10 November, Members of the UK Youth Parliament will debate on the results of the 'Make Your Mark' ballot at the House of Commons and inform their 2018 campaign. Results have not yet been published but locally the following topics have been highlighted:
 - Votes at 16
 - Curriculum for Life
 - Mental Health
 - Work Experience

RESOLVED THAT – Nick Andrews and James Andrews be thanked for the update.

16. SCOPING OF REVIEW OF RECYCLING AND WASTE, FLY TIPPING AND STREET CLEANING

The Waste and Transport Manager gave members a presentation covering the following topics:

- Street cleansing
- Waste management
- Garden waste collection
- Recycling collection
- Refuse collection
- New ways of working
- Current development
- Potential savings
- Conclusions

A copy of the presentation is annexed to the minutes.

Further to the presentation, the following additional points were made:

Street cleansing

- Full time staff of 26
- A schedule of cleansing in place

The current service review covers the following areas:

- Current way of cleansing
- Utilisation of resources
- Target areas
- Digitalisation
- Co-ordinate with Parks Department

During the presentation, the following questions were raised:

Is littering reported using the Rugby App?

The Rugby App is used mainly to report fly tipping. Reports come back via the contact centre. There has not been an increase in domestic fly tipping over the last 12 months.

Waste Management

- Full time staff of 58
- Daily collection across the borough – 11,356 bins
- Missed bins a day (on average) – 14 bins
- 5.5 domestic waste collection rounds
- 5.5 household recycling rounds
- 4 garden waste collection rounds (currently)
- 5 trade waste and recycling rounds

The Council has invested into a Route Optimisation Project which will optimise the best route for each individual collection. Staff will also be able to report missed or contaminated bins in real time.

Officers are in process of developing a Household Waste and Collection Policy which will be published on the Council's website and cover topics such as missed bins, replacement bins, recycling (what can and can't be recycled), etc.

Garden Waste Collection

- First scheme was introduced in 2002.
- 51 per cent of local authorities across England and Wales charge for garden waste collection
- The participation rate in Rugby is 48 per cent.
- The charge generated nearly £900,000 in income this year.
- The collection rounds were recently reduced from five to four. The aim is to reduce further to three collections.

During the presentation, the following questions were raised:

The green waste bins stickers are fading and peeling off.

The stickers are fading rather quickly due to the colour issued this year. The colour of the sticker will change every year. If there is a problem, a replacement sticker can

be issued. There are also issues around stolen stickers. As long as residents notify us, the crews can be informed.

Will the green waste collection subscription be automatically renewed the next financial year?

There won't be a process of automatic renewal. A reminder will be sent via email or letter informing the residents to re-subscribe. 66 per cent of residents subscribed for the service online this year. No matter how people subscribe to the service, postage costs will not be any different. Reminders will go out during the first two weeks of January 2018. The new stickers will be sent out two to three weeks before the new collection year starts. A one off direct debit payment for the service is currently being considered but will take a while to implement.

Recycling Collection

- The national recycling target for each local authority to reach is 50 per cent by 2020.
- Rugby's recycling rate averages at about 45 – 48 per cent in the last three to four years.
- The biggest issue for Rugby is the level of contamination.
- Once a month, a load test is undertaken at the Material Recycling Facility.
- For the last 12 months, the average contamination levels were 12 – 13 per cent. This has to go to the landfill for disposal. Landfill disposal charges are about £110 a tonne.
- Houses in Multiple Occupation (HMOs) and flats are the biggest problem with regards to contamination in Rugby and across the UK. 70 per cent of recycling bins are contaminated with residual waste and non-recyclable items. Known problem areas are being targeted and operational staff is being trained to tag bins properly.

During the presentation, the following questions were raised:

What would happen in a situation where someone else contaminated a bin?

If a bin is tagged and the resident calls about a non-collection, they will be explained why the bin wasn't emptied and advised that if the item is removed, it will be collected.

In a case of persistent contamination of recycling bins, is the service being withdrawn?

In these cases, the service is withdrawn. With regards to HMOs, landlords have no social responsibility. If a greater capacity of household waste is required by a landlord, the Council should be looking at charging the trade waste service as the landlord is earning commercial rent.

Waste Hierarchy

- Set up by DEFRA in 2000
- Rugby Borough Council is the collection authority.
- Warwickshire County Council is the disposal authority.

- In the last three to four years, recycling has dropped slightly mainly due to the introduction of new schemes which is a trend across the UK.
- Recycling had a positive impact on reducing the volume of waste going to landfill since it was first introduced.
- Stratford on Avon District Council is the top 7th in recycling out of 364 authorities.

During the presentation, the following questions were raised:

Why is Stratford on Avon so much better in recycling?

Stratford has a lot less rented properties and greater weight capacity. There is also a higher recycling rate in the villages than there is in the town.

Will the three weekly collection apply to both household waste and recycling?

Recycling collection will remain fortnightly. Only the household waste collection would move to a three weekly collection. This should encourage households to recycle and change the behaviour patterns. If an additional recycling bin is required, it will be provided.

Refuse collection

- 97.5 per cent of households have kerbside collection
- 2.5 per cent of households have a collection service from house entrance which includes farms and rural properties with long drives
- Refuse collection in the rural areas costs £150,000 – £160,000 a year.
- The poor conditions of the driveways and low hanging branches cause considerable damage to refuse collection vehicles. Collections from properties with very long driveways take additional time. It can take an hour to collect one bin. There are also difficulties with turning the vehicle around and more time is spent on reversing out of the driveway.
- Out of the 46,000 properties in Rugby, not every household waste bin is full every fortnight.
- There is a variety of collection systems across the UK providing different delivery options.
- The only way to increase recycling and reduce the amount of waste going to landfill is to restrict the waste that can go into a household bin. Households are allowed to have extra household waste bins if they are on the register (larger families, medical reasons, etc).
- A refuse collection vehicle costs £200,000 and has a life span of around seven years. The fuel consumption for a 26 tonne refuse collection vehicle is approximately 3.5 miles per gallon.
- Part of the new way of working is to consider partnerships with neighbouring authorities. This could introduce potential cross boundary savings, joint procurement and shared assets/vehicles.
- For Rugby Borough Council, the potential saving presented by a three weekly collection is £350,000 per annum.

Members of the committee have raised concerns with regards to food and animal waste being a major problem for a three weekly household waste collection.

The following areas of the service will be reviewed:

- Three weekly residual waste collection
- Number of properties with two or more residual waste bins
- Recycling collections from flats and HMOs
- Rural properties collection points

During the presentation, the following questions were raised:

Are the savings from the green waste collection going to offset some other collection charges? Where is the income being spend?

Subsequent to the meeting it was clarified that the over achievement of income from the Garden Waste Service in 2017/18 will be appropriated to General Fund balances to ensure these are sustained at a prudent level to mitigate the financial risk the Council faces. Increases in income from the Garden Waste Service have already been factored into future years' budgets.

With regards to the collection in rural areas, have officers made contact with the relevant landowners?

Most of these areas are private land and our vehicles are causing damage which landowners are putting claims in for. Conversations have taken place. The Council set a precedent when it started collecting from door step rather than the kerbside. If there is a real need for assisted collection, the bin will still need to be collected from the door step. Assisted collection can be applied for via the Council's website.

Potential savings and benefits for Rugby Borough Council

- Review of the rural properties collection points – £75-80K per annum
- Three weekly residual waste collection – £350K per annum
- Review of recycling collections from flats and HMOs – improve contamination and reduce about recycling to landfill
- Review of properties with two or more residual waste bins – reduce amount of household waste going to landfill and increase recycling

Largest savings will be delivered by combining changes to operations and working more effectively with routes and assets.

During the presentation, the following additional comments were made:

- Since April 2017, all of Rugby's residual waste has been taken to landfill. This is due to a change in Warwickshire County Council's (WCC) directive in their capacity as the disposal authority.
- Rugby's waste is currently taken to two landfill sites as directed by WCC:
 - Bubbenhall on Mondays, Thursdays and Fridays; and
 - Ling Hall on Tuesdays and Wednesday.
- The gate fee to dispose of a tonnage of waste at Rugby Cemex is higher than WCC is prepared to pay. They are also tied into long term contracts and to break these would be very costly.
- WCC's aim is to reduce household waste going to landfill which in turn will reduce the disposal costs.

- Rugby Borough Council has a contract with WCC over disposal of recycling and therefore has control over which disposal site is used. Due to the contract, WCC has to pay out recycling credits. When the contract expires, WCC can direct where the recycling is disposed of and therefore does not have to pay recycling credits.
- The Waste and Transport Manager and the Environment and Public Realm Portfolio Holder represent Rugby at the Warwickshire Waste Partnership. The next meeting is scheduled for December 2017.

During the presentation, the following additional questions were raised:

When bins are stickered, are the stickers in any particular language? Are the bins empty?

The stickers are mainly in English. This is something that needs to be looked at. Some of the bins are empty. Some of the recycling bins are contaminated with household waste.

What are we going to do about flats and HMOs?

In terms of flats and HMOs, we are looking at taking the recycling bins away if they are persistently misused. It all comes back to the landlord's responsibility. If a landlord calls about more bins for his tenants, he is generating a commercial income from them and needs to pay trade waste for extra waste services or dispose of the waste himself.

How can we educate people about recycling when packaging has a recycling symbol but might not be completely recyclable?

This is an issue that has to be addressed at a national level by organisations such as DEFRA. It's for the supermarkets and food processing packagers not to think that everything can be recycled. When the funding was available to set up the recycling schemes in early 2000s, there was no continuity across the UK. If there was one standards service, there would be one disposal site for it.

Is there anything that we could provide residents with to store food in if the Council decides to move to the three weekly residual waste collection?

Nationally, food waste is decreasing. The potential problem then may be that all the savings that are made through the three weekly residual waste collection are spent on provision of bags for food waste that degrade at a landfill site.

Is fly tipping Rugby Borough Council's responsibility?

Yes, it is. Domestic fly tipping is not a big issue at the moment. Industrial fly tipping will always be present.

RESOLVED THAT –

- (1) the Waste and Transport Manager be thanked for his presentation; and
- (2) the committee to keep an overview of the areas of concern.

17. COMMITTEE WORK PROGRAMME

The committee received a report (Part 1 – Agenda Item 5) concerning the progress of scrutiny reviews within its remit and the overview and scrutiny forward work programme for 2017/18.

Joint Overview and Scrutiny Committee – 6 November 2017

The meeting will be an opportunity to examine the work of the portfolio holders. Questions have been submitted in advance but there will be an opportunity to ask supplementary questions at the meeting.

CHAIR

Rugby Borough Council

Street Cleansing and Waste Management Operations

Shaun Barnes Waste and Transport Manager

Email: shaun.barnes@rugby.gov.uk

Telephone: 01788 533315 / 07811 996390

For Discussion.....

- The residents' view
- What is RBC doing?
- Street Cleansing
- Waste Management
- Garden Waste Collection
- Recycling Collection
- Refuse Collection
- New ways of working
- Why change?
- Current development
- Potential savings
- Conclusions

Does anybody care about my street?



Why does my street look like this?



What is RBC doing about this?



RBC response

- Pilot area - 2 streets targeted
- Bins left on pavements - stickered
- Letters to householders
- Bins not claimed – collected by RBC, treated as abandoned bins

Results:

- Street 1: residents claimed and moved bins
- Street 2: 75% of bins claimed and moved - remaining bins collected by RBC

Next Steps..

- To sticker all bins left on the footpath – then remove any abandoned bins
- Not a quick process - but we aim to improve the appearance of the Borough
- Safety for blind/visually impaired, wheelchair users, Mums and buggies etc.

Please help us:

- Where in your ward we can find these unloved bins?

Street Cleansing

- Full time staff - 26

Service Review:

- Challenge: why do we do it this way?
- Utilisation of resources
- Target areas: bins, shops, play areas – increased frequencies
- Digitalisation: improve response time
- Co-ordinate with Parks Dept.

Waste Management

- Full time staff - 58 staff
- Daily collection - 11,356 bins
- Missed bins - 14 daily average
- Equates to 0.12% of bins missed / day

- 5.5 domestic waste collection rounds
- 5.5 household recycling rounds
- 4 garden waste collection rounds (current)
- 5 trade waste and recycling rounds

Action:

- Route optimisation project
- Developing household waste and collection policy

Garden Waste Collection

- 51% of LAs charge for garden waste collection
- 2002 first scheme
- 45,709 households in RBC
- 22,154 households subscribed to date
- 48% participation rate
- £886,160 income p.a.
- Recently reduced collection rounds from 5 to 4

Aim:

- To reduce to 3

Example LAs: Charged Garden Waste Schemes (176 WCA's in England & Wales – 51%)

| Council | Rurality | Governing Administration |
|----------------|--------------------------------|---------------------------------|
| Wirral | Urban with a major conurbation | Labour |
| Melton | Mainly rural | Conservative |
| Halton | Urban with a city and town | Labour |
| Eastleigh | Urban | Liberal |
| Trafford | Urban with a major conurbation | Conservative |
| Lincoln City | Urban with a city and town | Labour |
| Cheltenham | Urban | Liberal |
| Gwynedd | Mainly rural | PC |
| Rushcliffe | Largely rural | Conservative |

Recycling Collection

- 2020 recycling target - 50%
- Current recycling rate - average 45-48%
- Contamination levels in recycling bins - average 12-13%
- Flats and HMO's: recycling bins contaminated with residual waste and non recyclable items - 70%

Action:

- Targeting known problem areas
- Operational Staff: train and tag bins

Contaminated Recycling Bins



Recycling

- ✓ Paper & Card
- ✓ Food Waste
- ✓ Glass Bottles & Jars
- ✓ Plastic Bottles & Cans
- ✓ Plastic Food Trays
- ✓ Plastic Pots
- ✓ Margarine Tubs
- ✓ Food & Drink Cartons
- ✗ Tins
- ✗ Aerosols
- ✗ Electrical Goods
- ✗ Household Appliances
- ✗ Garden Waste
- ✗ Tyres
- ✗ Mattresses
- ✗ Carpets
- ✗ Upholstery
- ✗ Mattresses
- ✗ Carpets
- ✗ Upholstery

rugby.gov.uk/recycling



Recycling

Recycling

NO THANK YOU!

- ✗ Any Plastic Bags
- ✗ Household Appliances
- ✗ Small Waxes
- ✗ Nappies
- ✗ Garden Waste
- ✗ Electrical Goods
- ✗ Metal Pots/Pans, Tins
- ✗ Mattresses
- ✗ Tyres and Shoes

www.rugby.gov.uk/recycling

Recycling

Food Tins & Drink Cans

Foil

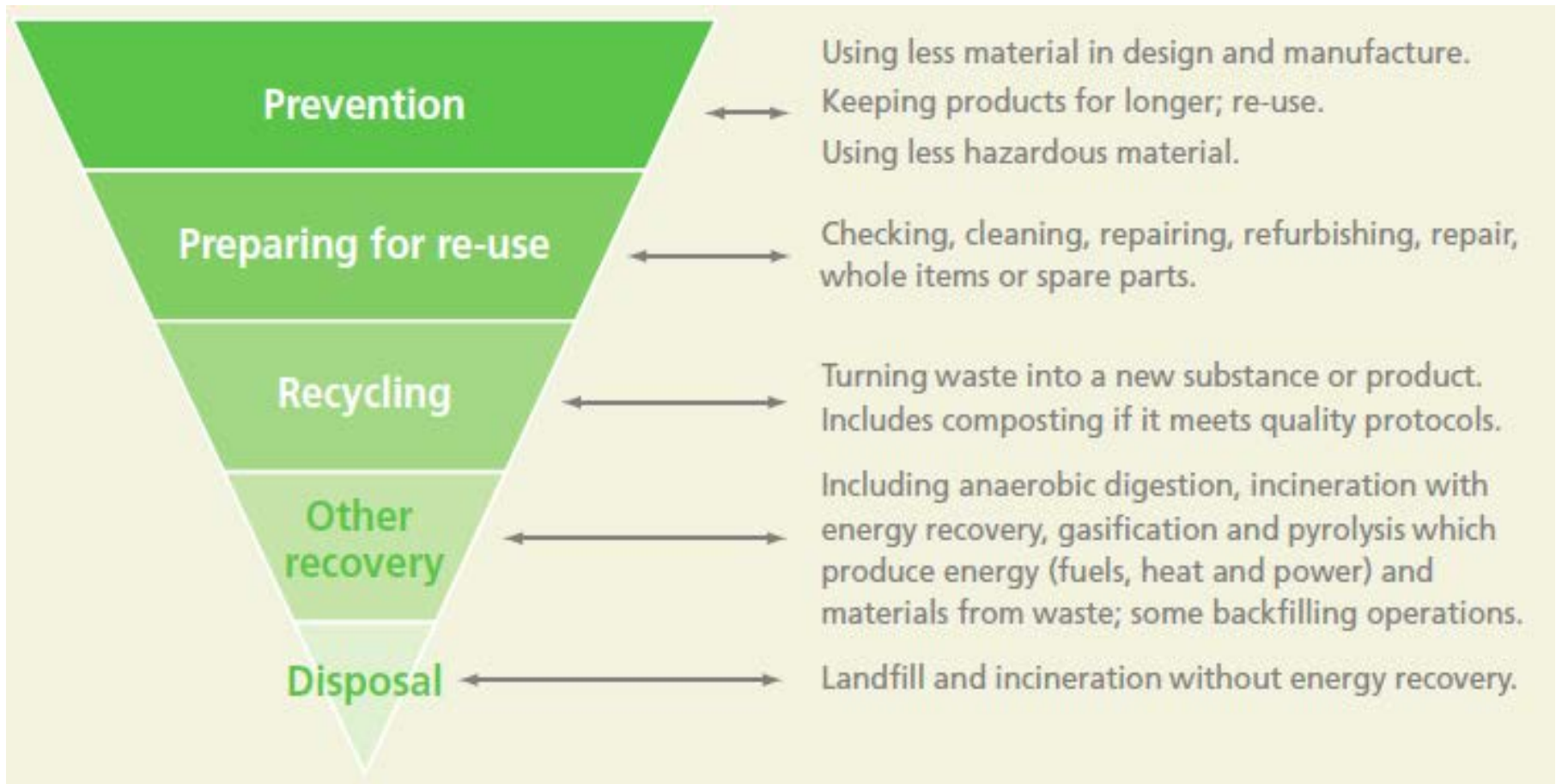
Mixed Glass
Bottles & Jars

Plastics

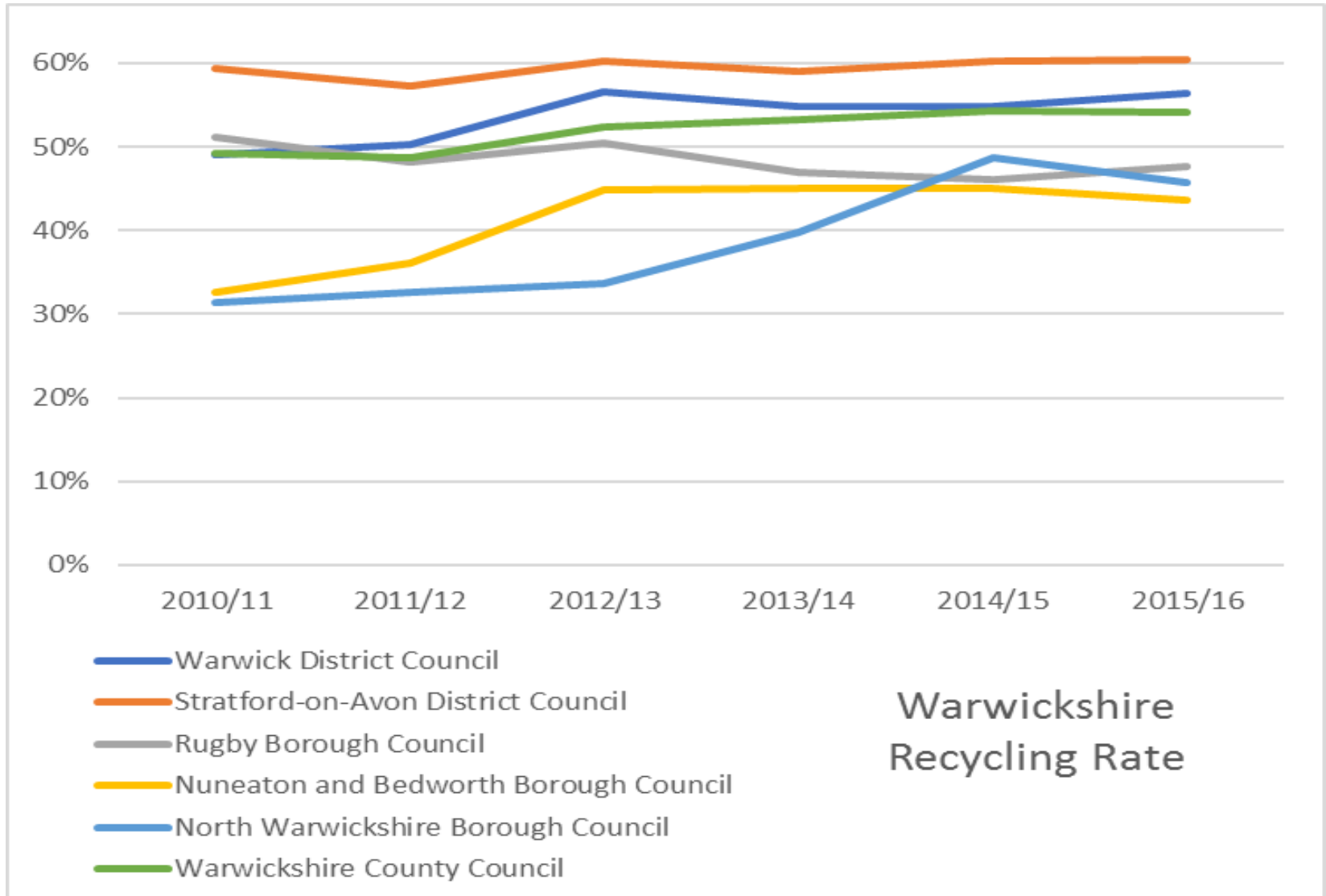
Cartons

No plastic bags or film.
Please free of food and drink containers.

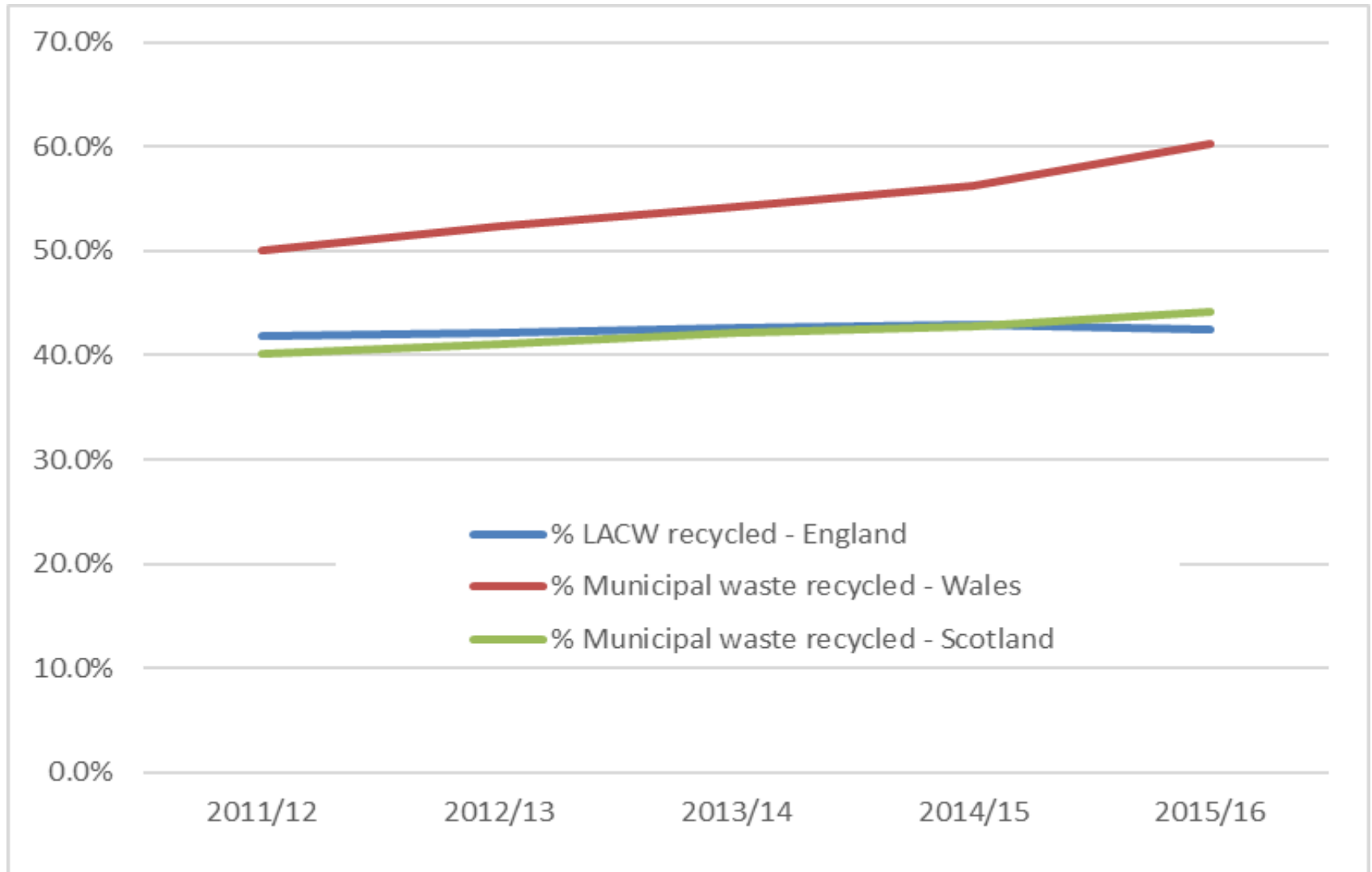
Waste Hierarchy



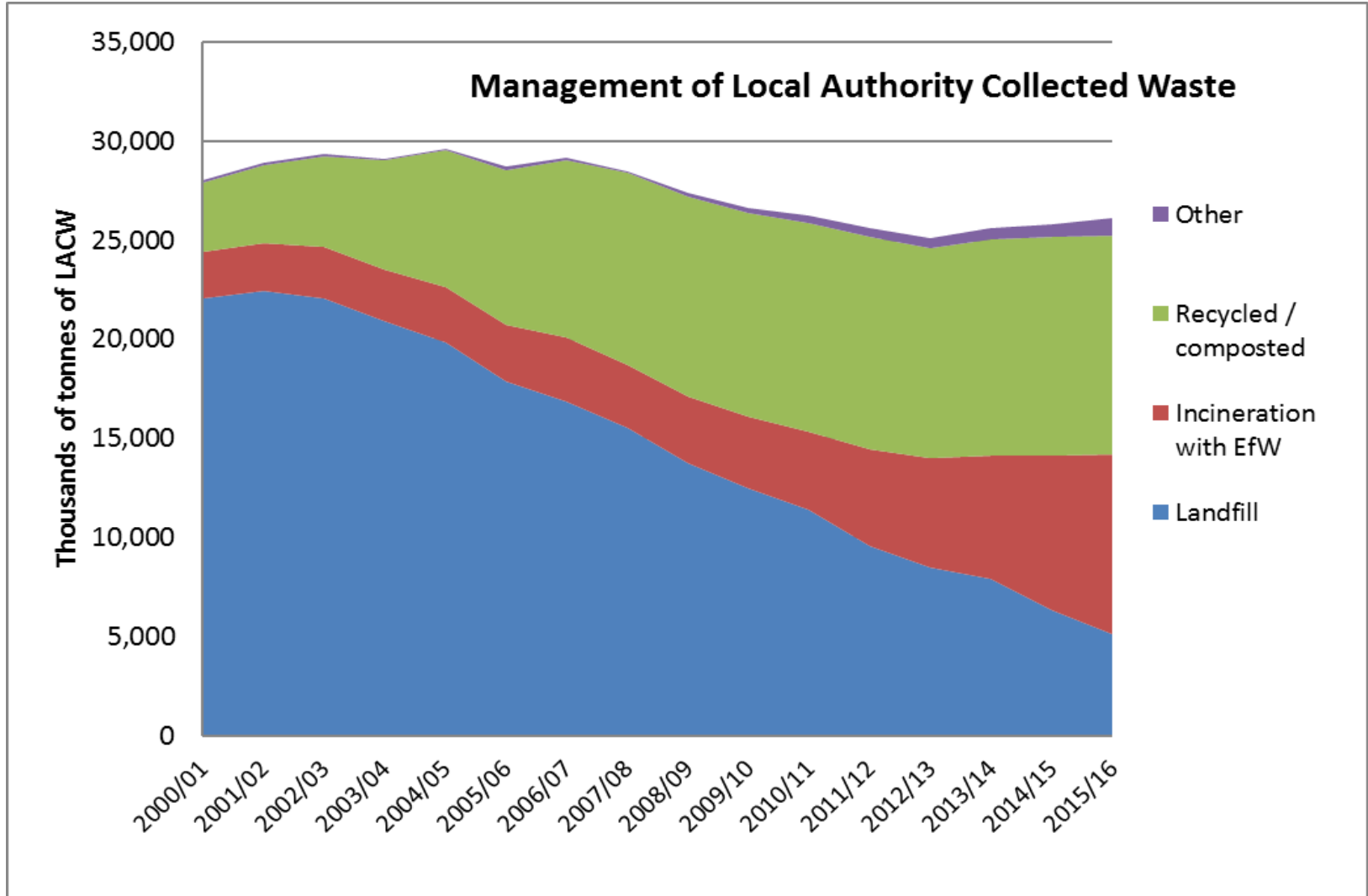
Performance - Warwickshire



Performance across administrations



Performance – Waste Management



Refuse Collection

- 97.5% RBC households have kerbside collection
- 2.5% collection service from house entrance
- Includes farms/rural properties long driveways
- Poor driveways damage RCV's / additional time

Action Proposed:

- 2001/02 Foot and Mouth outbreak - collection authorities banned from entering properties
- Some LAs realised the savings & kept kerbside collection
- Blaby District Council 2002 saved £78k p.a.

Non-kerbside collection issues





New ways of working

Working with our neighbouring authorities

- Potential cross boundary savings
- Shared assets / vehicles
- Joint procurement



Why change?

- Budgetary considerations – significant Waste budget
- Delivery options - variety of collection systems across UK

Action Proposed:

- Restricting amount of waste collected:
 - **Making** householders change habits and recycle more
- Landfill tax and disposal costs - £110 / tonne
- Future legacy
- Environmental conscience

Example LA: Less Frequent Residual Collections (3 weekly, c.11 WCAs)

- Dorset and Somerset Waste Partnerships currently considering 3 weekly residual waste collection service

| Council | Rurality | Governing Administration |
|----------------|--------------------------------|---------------------------------|
| Conwy | Largely rural | Conservative |
| Bury | Urban with a major conurbation | Labour |
| Falkirk | Other Urban | SNP |
| East Devon | Largely Rural | Conservative |
| Salford | Urban with a major conurbation | Labour |
| Rochdale | Urban with a major conurbation | Labour |

Scenario: Restricting Residual Waste Collection Service to 3 Weeks

- 5% reduction in remaining residual waste generation
(Based on experience from Conwy)
- Potential collection savings up to £210k p.a.
- Potential treatment costs savings up to £350k p.a.
- **Potential savings (RBC) £350k/annum**

Options to Review

- Review of indicative savings:
 - Review collection frequencies
 - Less frequent / restricted residual waste collection
 - Recycling collection improved contamination levels
 - Review collection points – rural Properties
 - Review number of properties with 2 residual waste bins
 - Review recycling collections from flats and HMO's

Review: Rural Properties Collection Point

- **RBC policy** - collect from kerbside
- Rural areas i.e. farms / houses with long driveways (1,086 properties) - door step collection
- 2 dedicated collection rounds
- Cost of collection £150-160k p.a.
- Introducing kerbside collection - save one collection round – saving of £75-80k p.a.

Review: Domestic Waste Collections – 3 Weekly Collections

- Operating costs - saving £300-350k p.a.
- Restrict amount of waste to landfill
- Increase recycling rate

- Daventry District Council reviewed waste collection service 2016
- June 2018 domestic waste collection changing from fortnightly to 3 weeks

Review: Recycling Collections –Flats &HMO's

- Across RBC flats & HMO's recycling heavily contaminated with residual waste
- Rugby high number of rented properties
- Flats and HMO's do not have individual bins
- One area can contaminate an 8 tonne recycling load
- £110 / per tonne in landfill charges /disposal costs plus lost recycling credits / income

Review: Properties 2 or more bins – Residual Waste

- 346 properties with 2 or more residual waste bins
- Our collection crews tell us there are more
- Must restrict amount of household waste going to landfill & reduce number of bins to encourage recycling

Summary of Potential Savings

| Service Area | Potential saving | Outcome / comment |
|---|-------------------|---|
| Review of rural properties collection points | £75-80k pa | Includes treatment and collection costs |
| Three weekly residual waste collection | £350k pa | Includes treatment and collection costs |
| Review of recycling collections flats and HMO's | | Improve contamination and reduce amount of recycling going to landfill |
| Review of properties with two or more residual waste bins | | Reduce amount of household waste going to landfill and increase recycling |
| | | |

Conclusions

- Largest savings delivered by combining changes to operations & working more effectively with routes / assets

How do we move forward?

- Do we restrict the amount of household waste going to landfill and encourage recycling
- Together work to improve the environment for future generations

We do a good job – But..



There is always room for improvement



Thank You
Any Questions