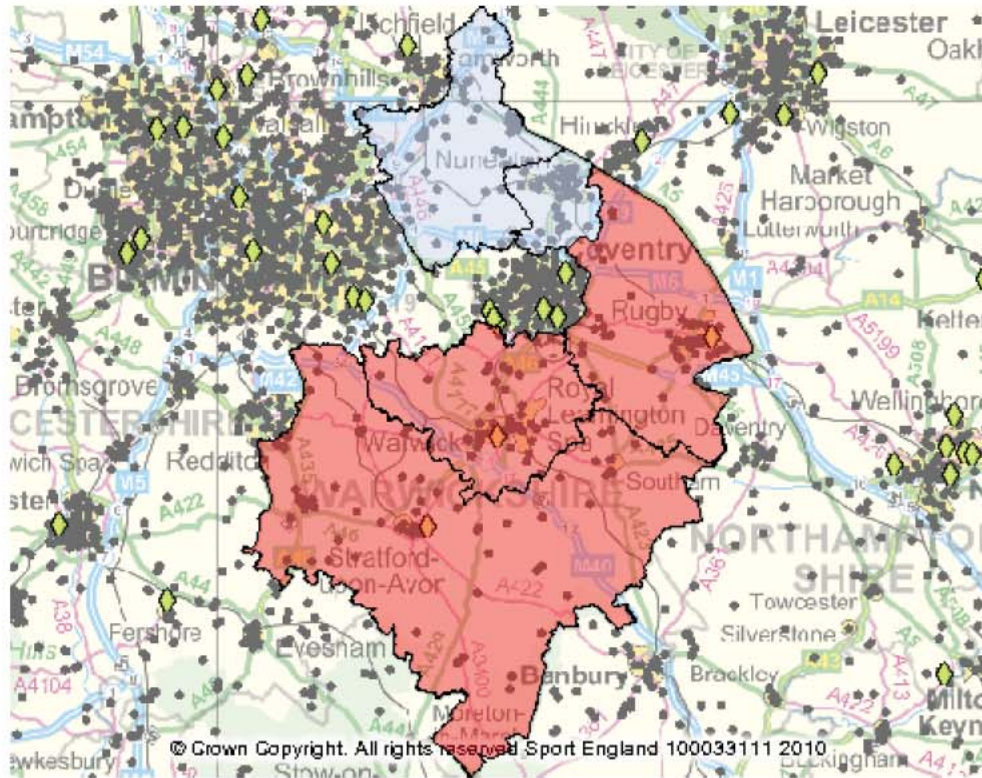


Synthetic Turf Pitches – 3G

Provision per 1000 – authority wide

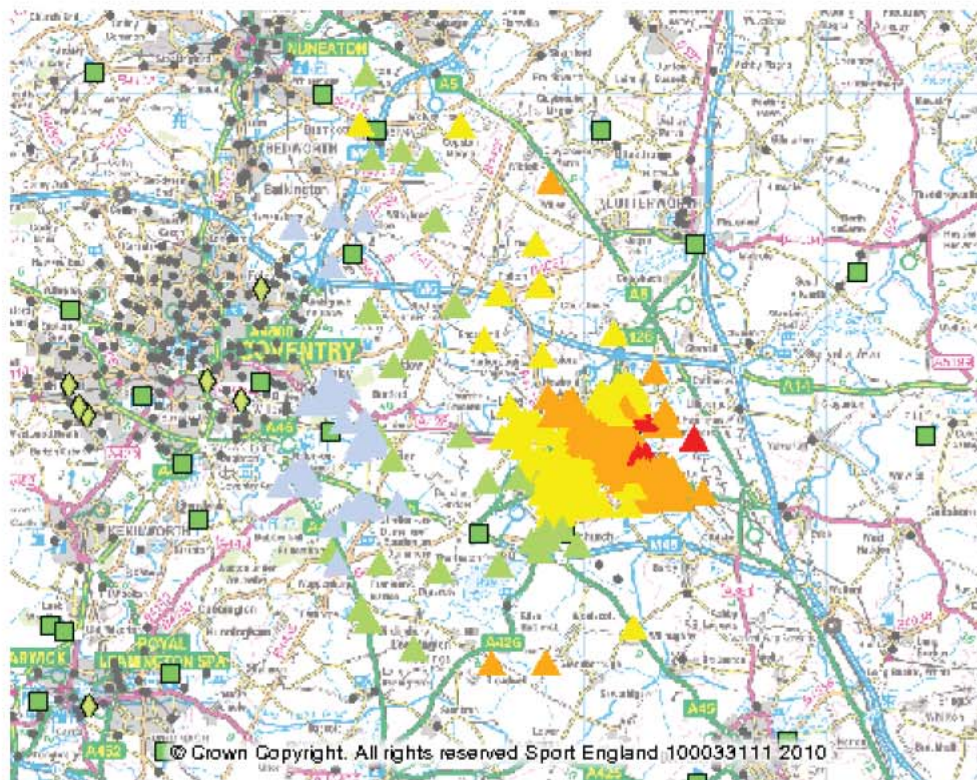


Facility Type : Synthetic Turf Pitch
 Facility Sub Type : Rubber crumb pile (3G)
 Facility Unit : Total Number Of Pitches by Sub Types

Symbol	Range
Light Blue	0 - 0.002
Red	0.009 - 0.01

England Ratio :	0.01
West Midlands Region Ratio:	0.01
Warwickshire County Ratio:	0.01
Rugby Borough Ratio:	0.01

Travel time by car – 3G pitch

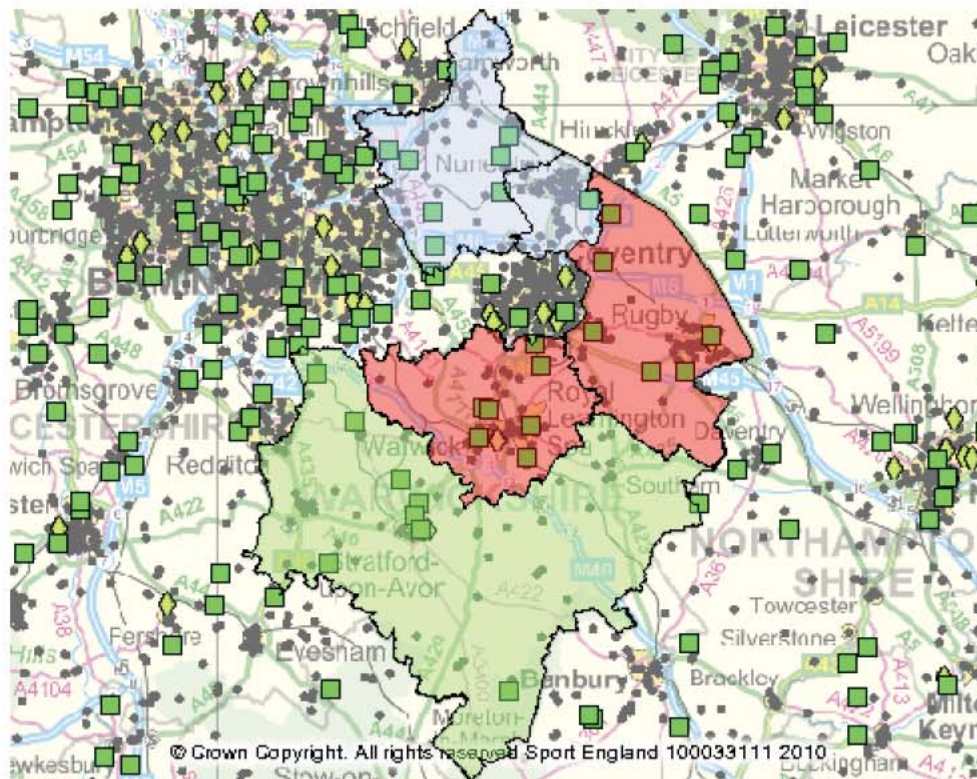


Facility type: Synthetic Turf Pitch
Sub Facility Type: Rubber crumb pile (3G)
Local Authority: Rugby District
Travel Type: Travel Time
Mode of Travel: By Car

Symbol	Range (minutes)
▲	7.75 - 11.924
▲	11.9241 - 16.098
▲	16.0981 - 20.272
▲	20.2721 - 24.446
▲	24.4461 - 28.62

Synthetic Turf Pitch – sand based

Provision per 1000 – whole authority

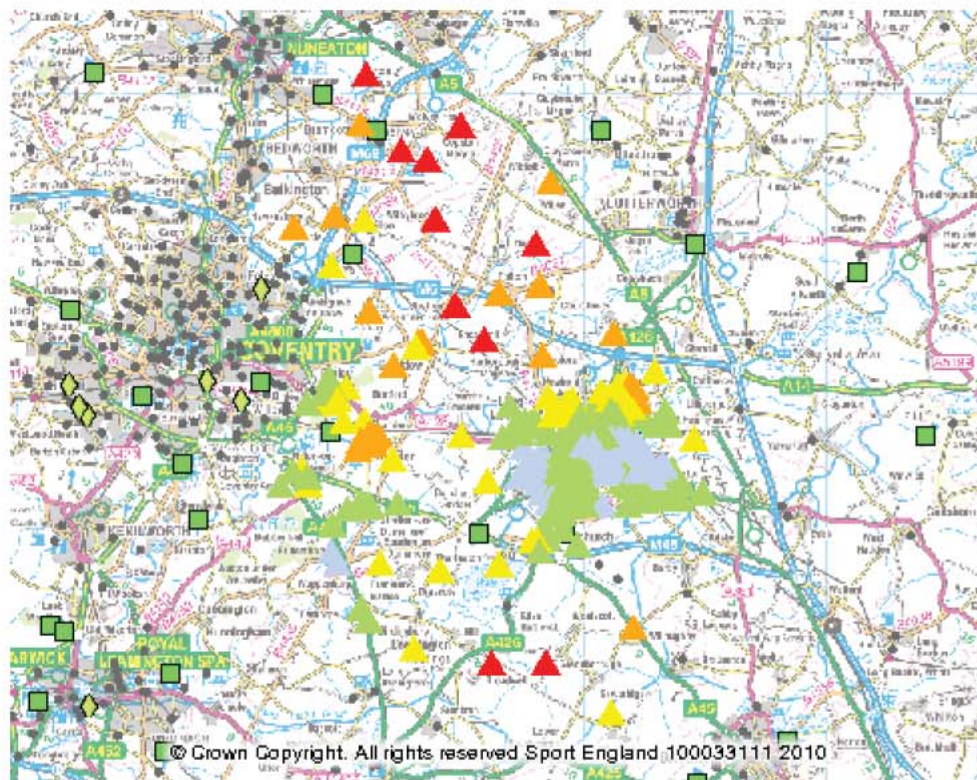


Region : West Midlands Region
 County : Warwickshire County
 Facility Type : Synthetic Turf Pitch
 Facility Sub Type : Sand Based
 Facility Unit : Total Number Of Pitches by Sub Types






Symbol	Range
	0 - 0.012
	0.013 - 0.024
	0.049 - 0.06

England Ratio :	0.03
West Midlands Region Ratio:	0.03
Warwickshire County Ratio:	0.03
Rugby Borough Ratio:	0.06

Travel time to sand based STP by car

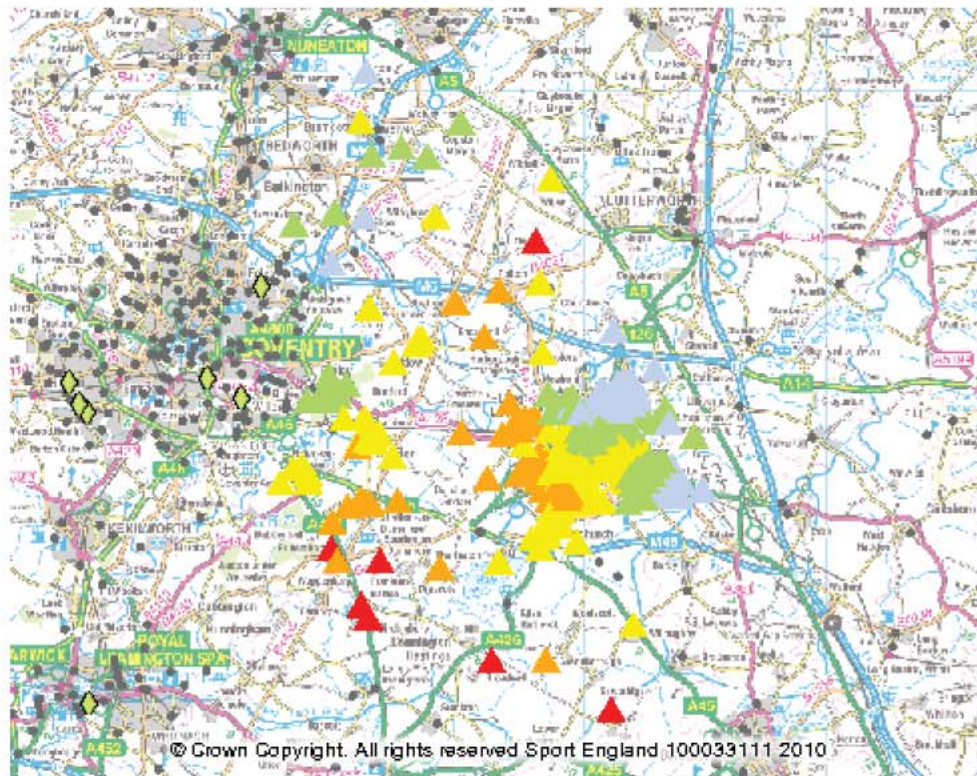


Facility type: Synthetic Turf Pitch
Sub Facility Type: Sand Based
Local Authority: Rugby District
Travel Type: Travel Time
Mode of Travel: By Car

Symbol	Range (minutes)
	3.12 - 5.712
	5.713 - 8.304
	8.305 - 10.896
	10.897 - 13.488
	13.489 - 16.08

Water-based STPs

Travel time by car

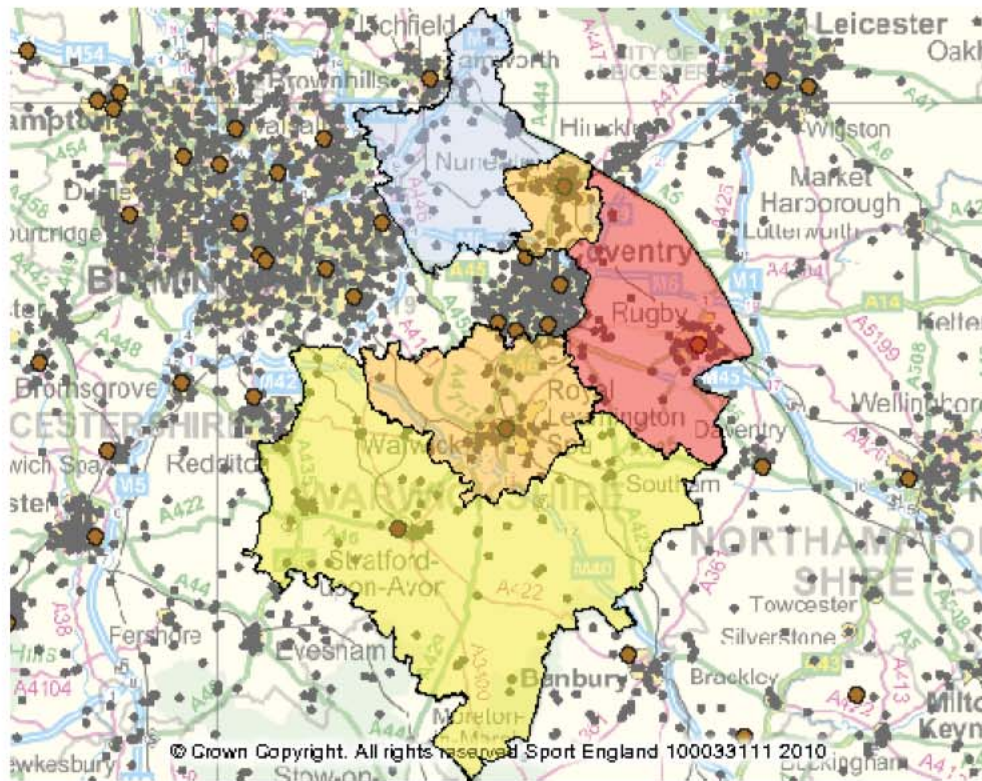


Facility type: Synthetic Turf Pitch
Sub Facility Type: Water Based
Local Authority: Rugby District
Travel Type: Travel Time
Mode of Travel: By Car

Symbol	Range (minutes)
▲	33.77 - 36.616
▲	36.6161 - 39.462
▲	39.4621 - 42.308
▲	42.3081 - 45.154
▲	45.1541 - 48

Athletics Tracks

Provision per 1000 – authority as a whole



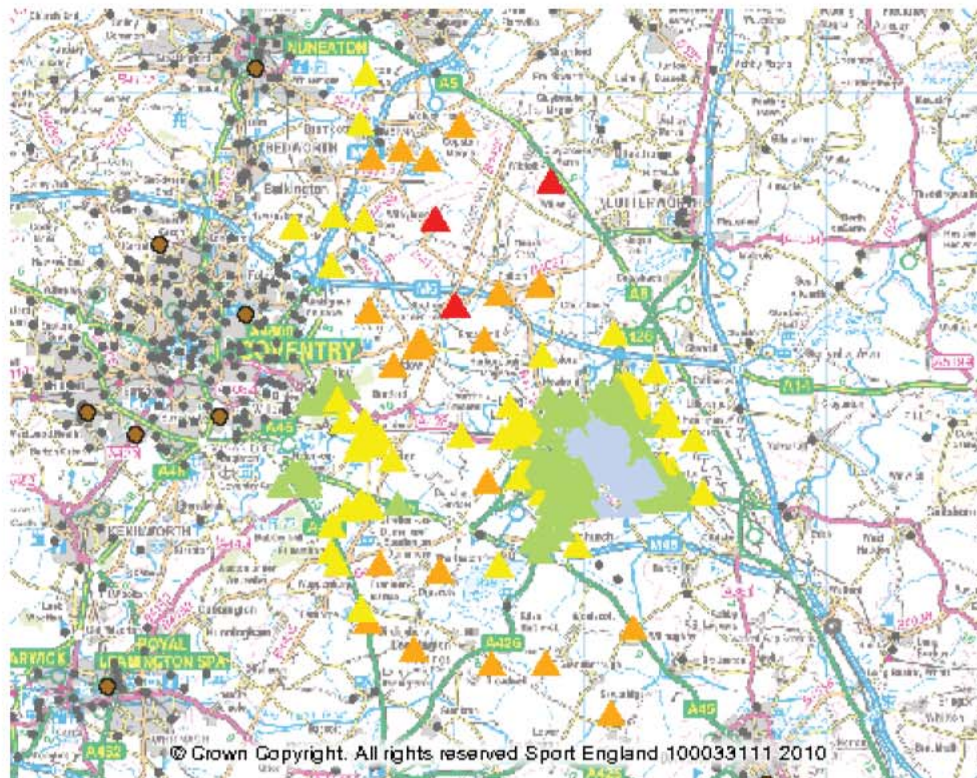
Number Of Lanes per 1000 population

Region : West Midlands Region
 County : Warwickshire County
 Facility Type : Athletics Tracks
 Facility Sub Type : All
 Facility Unit : Number Of Lanes

Symbol	Range
Light Blue	0 - 0.018
Yellow	0.037 - 0.054
Orange	0.055 - 0.072
Red	0.073 - 0.09






England Ratio :	0.05
West Midlands Region Ratio:	0.06
Warwickshire County Ratio:	0.06
Rugby Borough Ratio:	0.09

Travel time by car



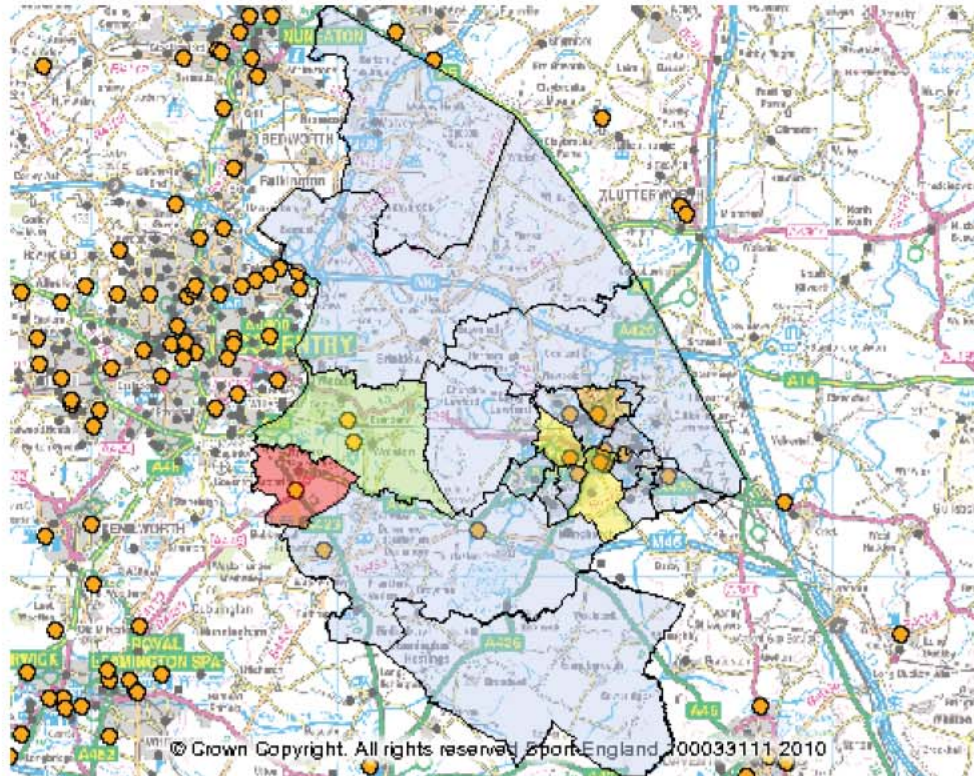
Time to the Nearest site

Facility type: Athletics Tracks
Sub Facility Type: All
Local Authority: Rugby District
Travel Type: Travel Time
Mode of Travel: By Car

Symbol	Range (minutes)
	3.87 - 7.142
	7.143 - 10.414
	10.415 - 13.686
	13.687 - 16.958
	16.959 - 20.23

Health and Fitness

Provision per 1000 by ward



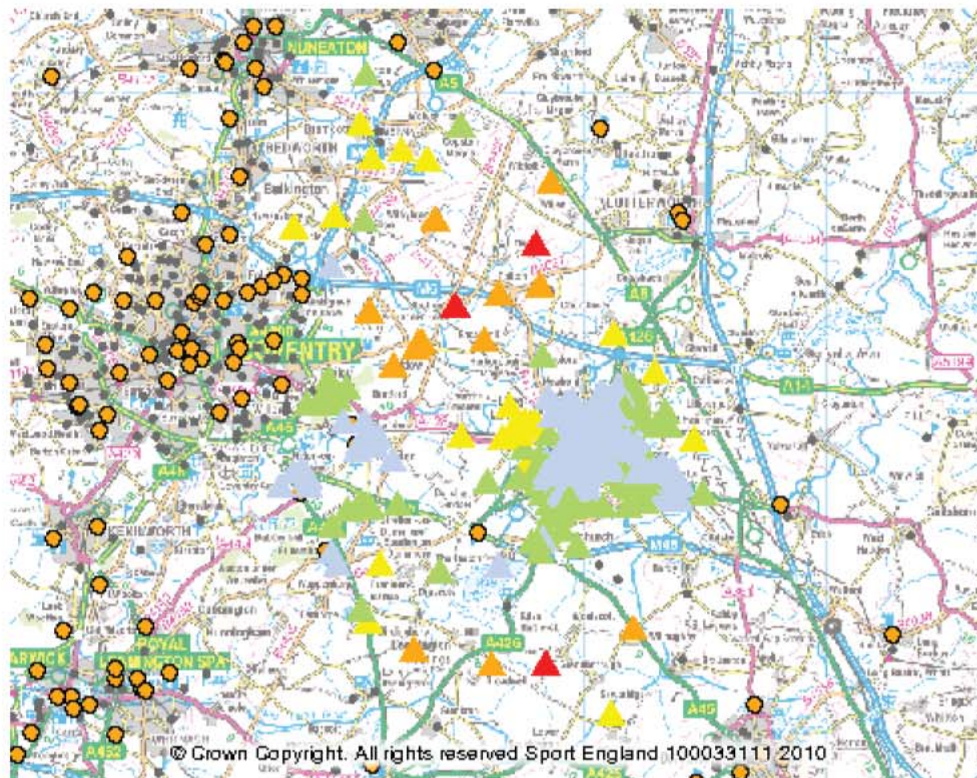
Number Of Stations per 1000 population

Region : West Midlands Region
 Local Authority : Rugby District
 Facility Type : Health and Fitness Suite
 Facility Sub Type : All
 Facility Unit : Number Of Stations

Symbol	Range
Light Blue	0 - 7.16
Light Green	7.17 - 14.32
Yellow	14.33 - 21.48
Orange	21.49 - 28.64
Red	28.65 - 35.8






England Ratio :	5.59
West Midlands Region Ratio:	4.89
Rugby District Ratio:	5.83

Travel time by car



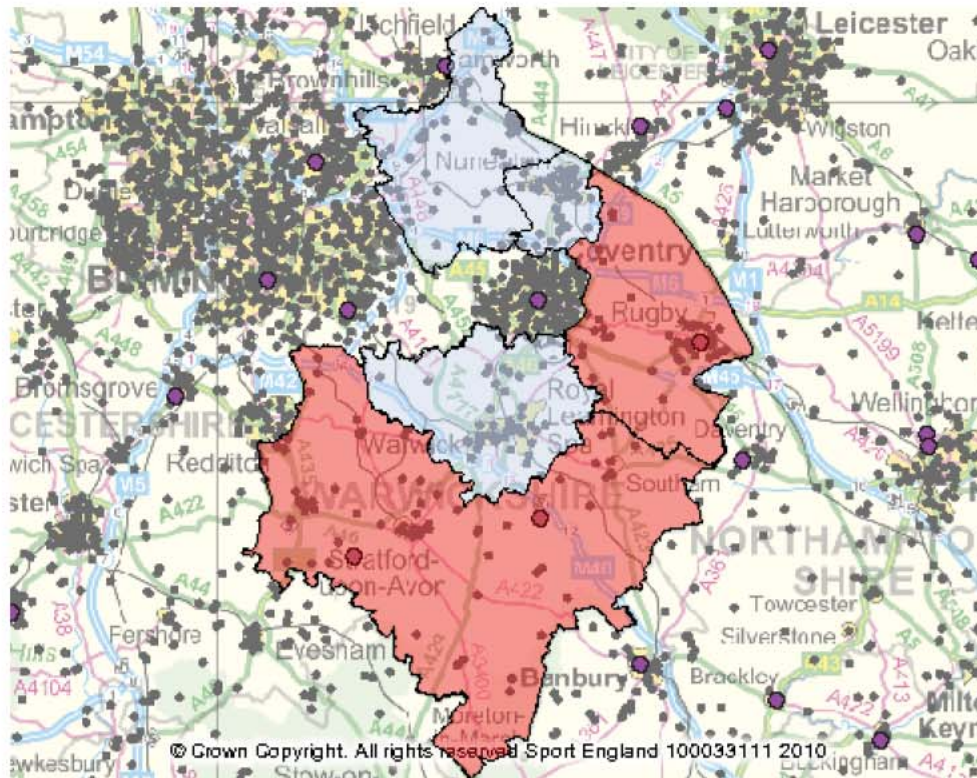
Time to the Nearest site

Facility type: Health and Fitness Suite
Sub Facility Type: All
Local Authority: Rugby District
Travel Type: Travel Time
Mode of Travel: By Car

Symbol	Range (minutes)
	3.05 - 5.186
	5.187 - 7.322
	7.323 - 9.458
	9.459 - 11.594
	11.595 - 13.73

Indoor Bowls

Provision per 1000



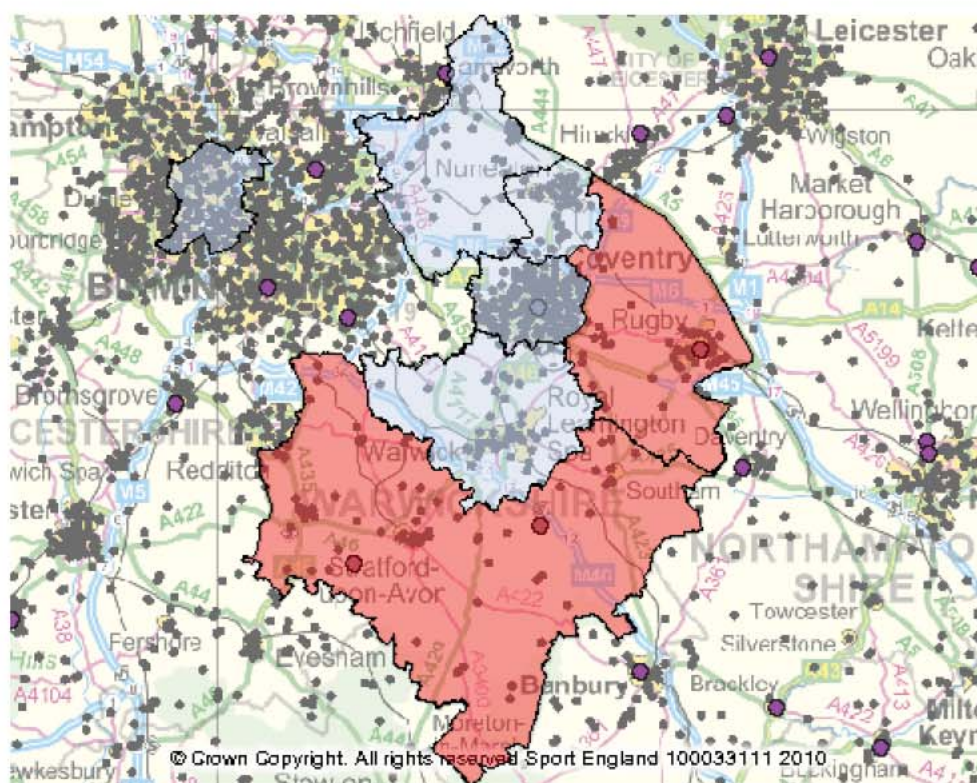
Number Of Rinks per 1000 population

Region : West Midlands Region
 County : Warwickshire County
 Facility Type : Indoor Bowls
 Facility Sub Type : All
 Facility Unit : Number Of Rinks

Symbol	Range
	0 - 0.022
	0.089 - 0.11

England Ratio :	0.04
West Midlands Region Ratio:	0.01
Warwickshire County Ratio:	0.04
Rugby Borough Ratio:	0.09

Local supply and demand balance



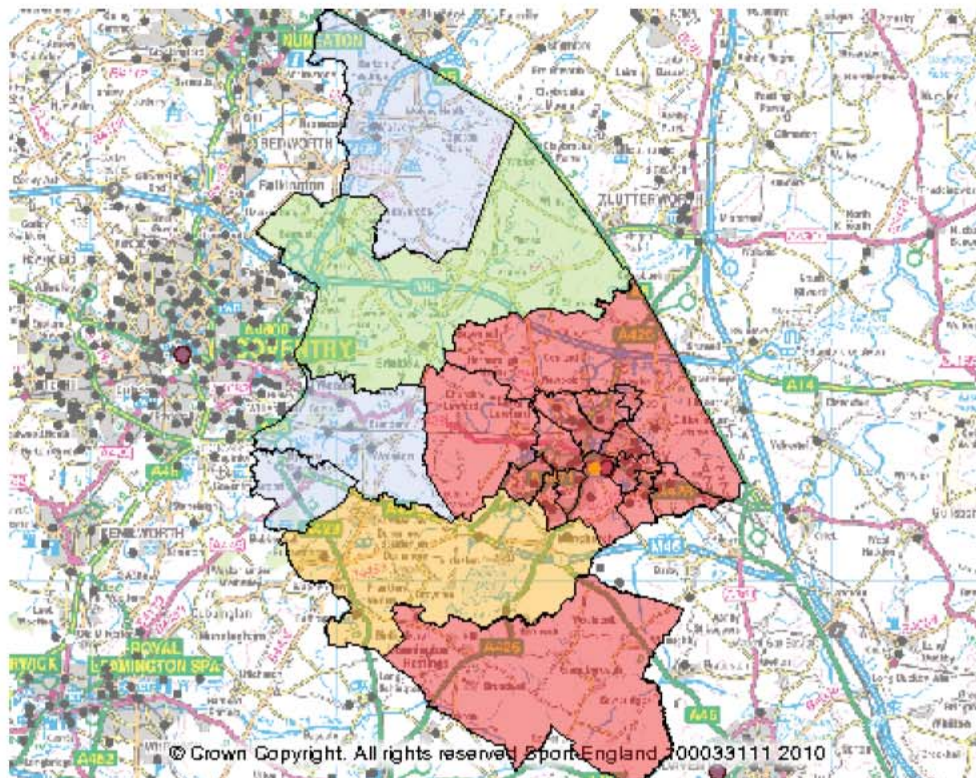
Local Supply and Demand Balance

Region :	West Midlands Region
County :	Warwickshire County
Facility Type :	Indoor Bowls
Spatial Unit :	Local Authority
Opening/Ownership Group :	Community use, all ownership type

Symbol	Range
	0 - 31.096
	124.385 - 155.48

% England Demand Met:	58.20
% West Midlands Region Demand Met:	23.20
% Warwickshire County Demand Met:	59.44
% Rugby Borough Demand Met:	147.52

Personal Share

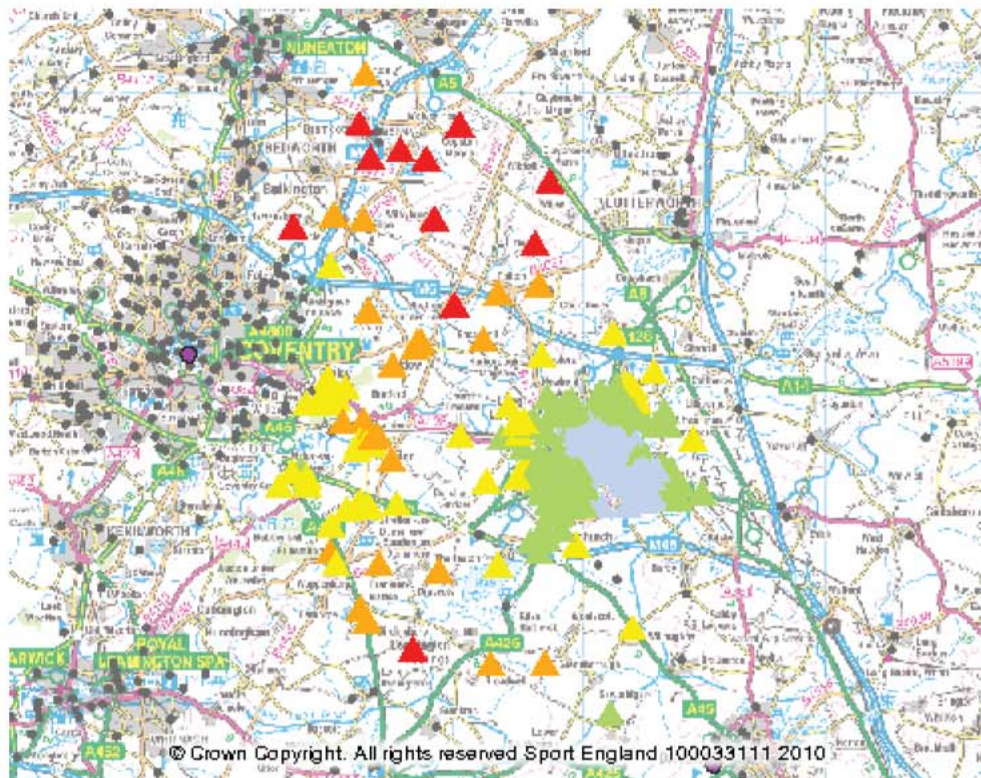


Region : West Midlands Region
Local Authority : Rugby District
Facility Type : Indoor Bowls
Facility Unit : Number Of Rinks
Opening/Ownership Group : Community use, all ownership type






Symbol	Range
Light Blue	0.41 - 0.634
Light Green	0.635 - 0.858
Light Orange	1.083 - 1.306
Red	1.307 - 1.53

England Ratio :	0.58
West Midlands Region Ratio:	0.25
Rugby District Ratio:	1.27

Travel time by car



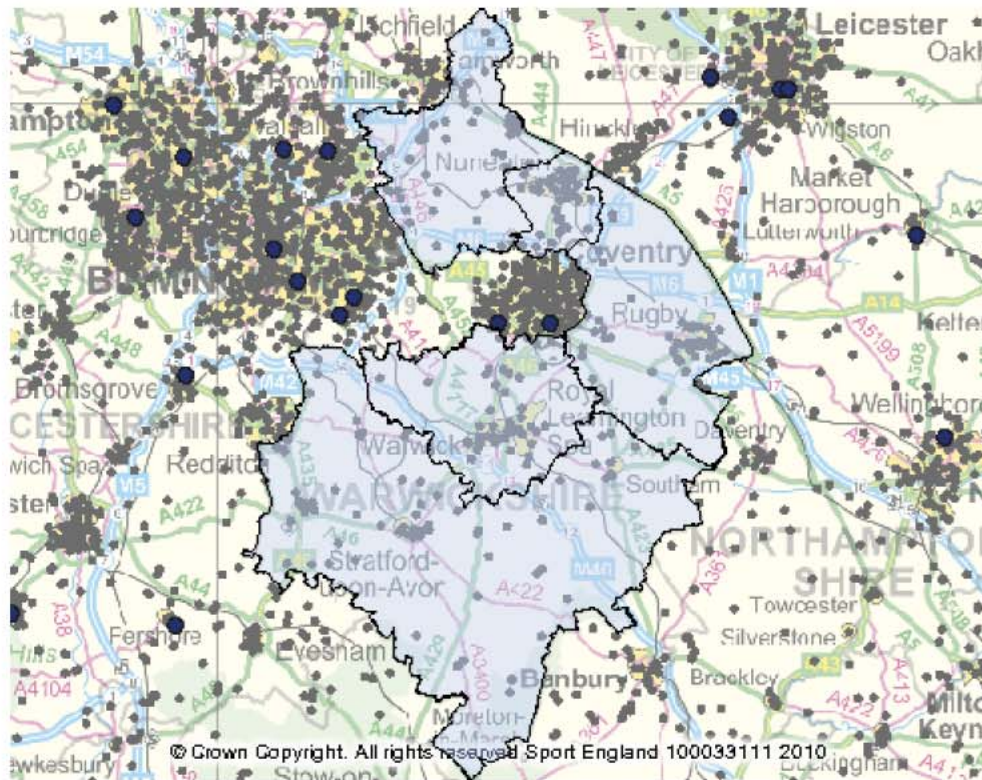
Facility type: Indoor Bowls
Sub Facility Type: All
Local Authority: Rugby District
Travel Type: Travel Time
Mode of Travel: By Car

Symbol	Range (minutes)
	3.62 - 7.402
	7.403 - 11.184
	11.185 - 14.966
	14.967 - 18.748
	18.749 - 22.53

Much of Wolvey ward is over 20 mins from the nearest indoor bowls centre, as is a small part of Fosse Ward.

Indoor Tennis

Provision per 1000 – authority wide

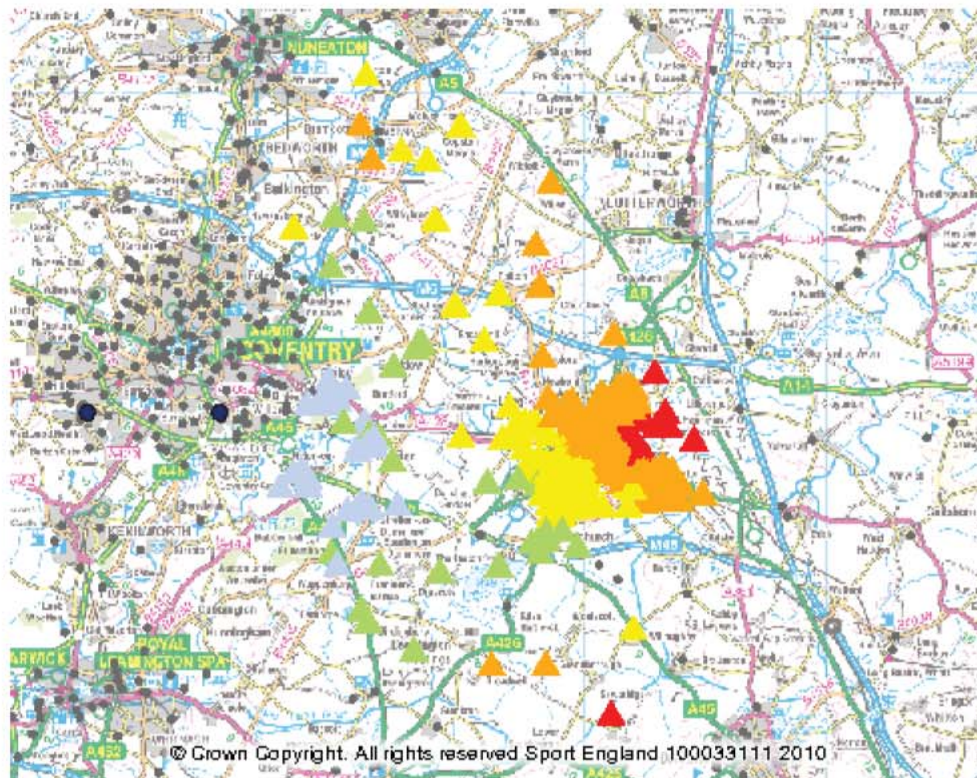


Region : West Midlands Region
 County : Warwickshire County
 Facility Type : Indoor Tennis Centre
 Facility Sub Type : All
 Facility Unit : Number Of Courts






Symbol	Range
	0 - 0

England Ratio :	0.03
West Midlands Region Ratio:	0.02
Warwickshire County Ratio:	0.00
Rugby	0.00

Travel time

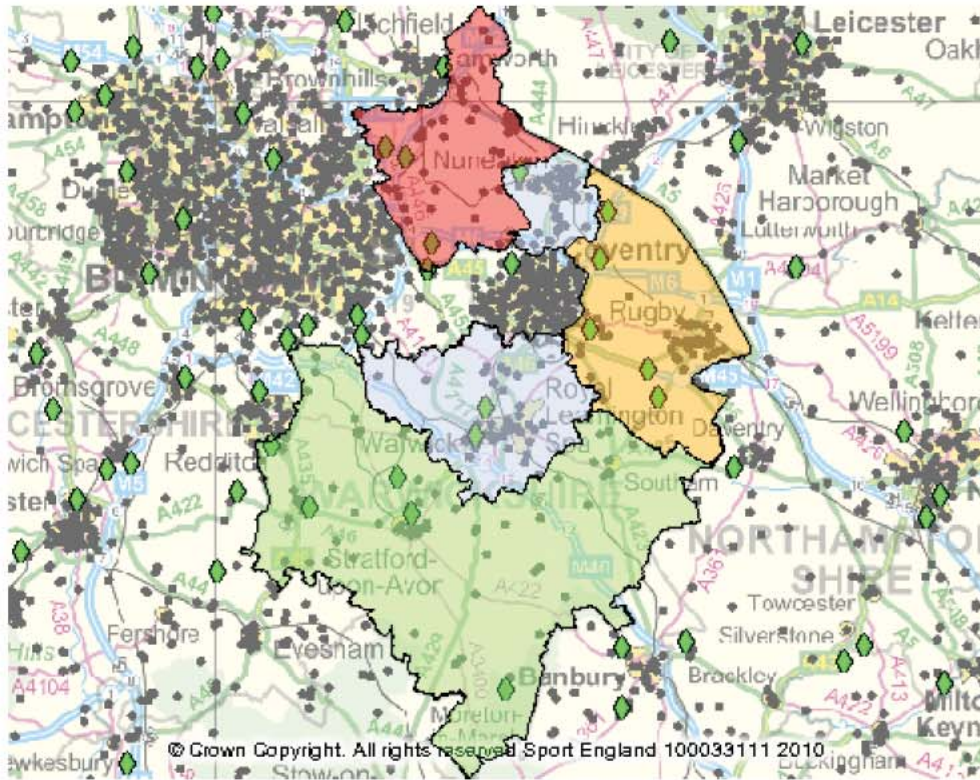


Facility type: Indoor Tennis Centre
Sub Facility Type: All
Local Authority: Rugby District
Travel Type: Travel Time
Mode of Travel: By Car

Symbol	Range (minutes)
	8.07 - 12.242
	12.2421 - 16.414
	16.4141 - 20.586
	20.5861 - 24.758
	24.7581 - 28.93

Golf - driving range

Provision per 1000 – authority wide

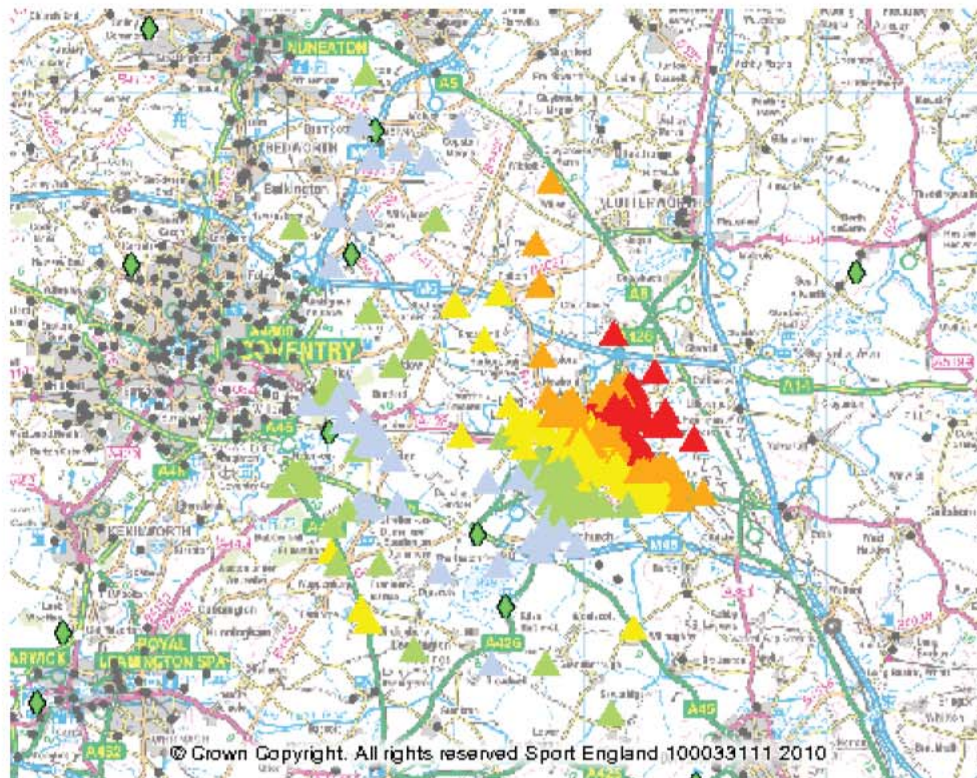


Region : West Midlands Region
 County : Warwickshire County
 Facility Type : Golf
 Facility Sub Type : Driving Range
 Facility Unit : Number Of Bays

Symbol	Range
	0.17 - 0.446
	0.447 - 0.722
	0.999 - 1.274
	1.275 - 1.55

England Ratio :	0.25
West Midlands Region Ratio:	0.26
Warwickshire County Ratio:	0.69
Rugby	1.2

Travel time by car



Facility type:

Golf

Sub Facility Type:

Driving Range

Local Authority:




Rugby District

Travel Type:

Travel Time

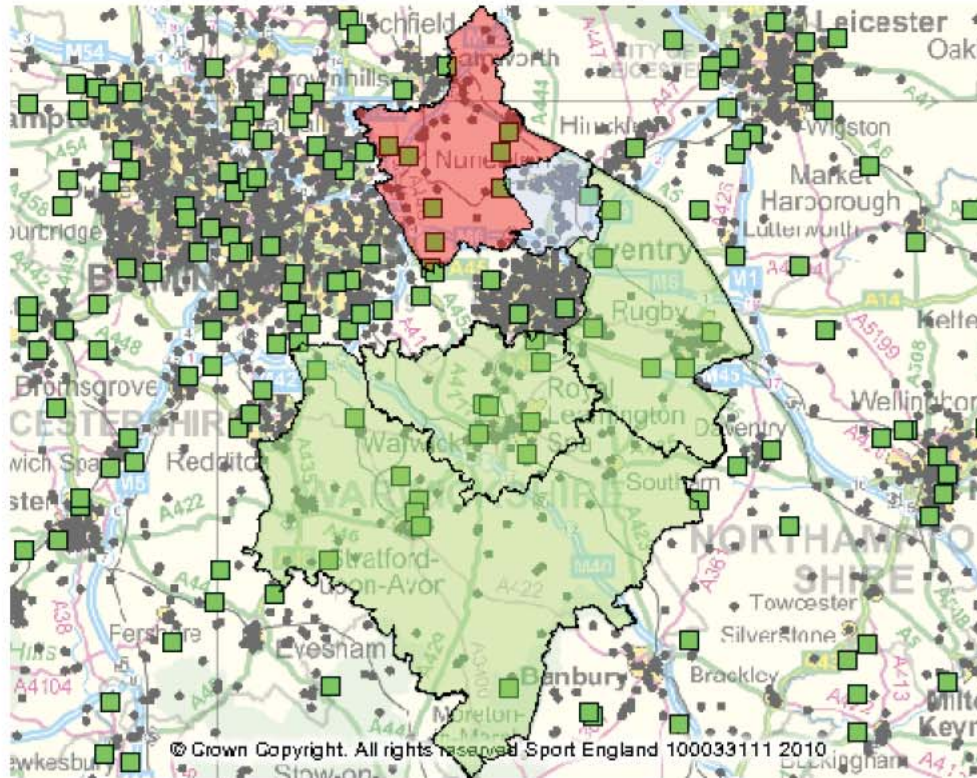
Mode of Travel:

By Car

Symbol	Range (minutes)
	4.3 - 7.14
	7.15 - 9.98
	9.99 - 12.82
	12.83 - 15.66
	15.67 - 18.5

Standard courses

Provision per 1000 – authority wide

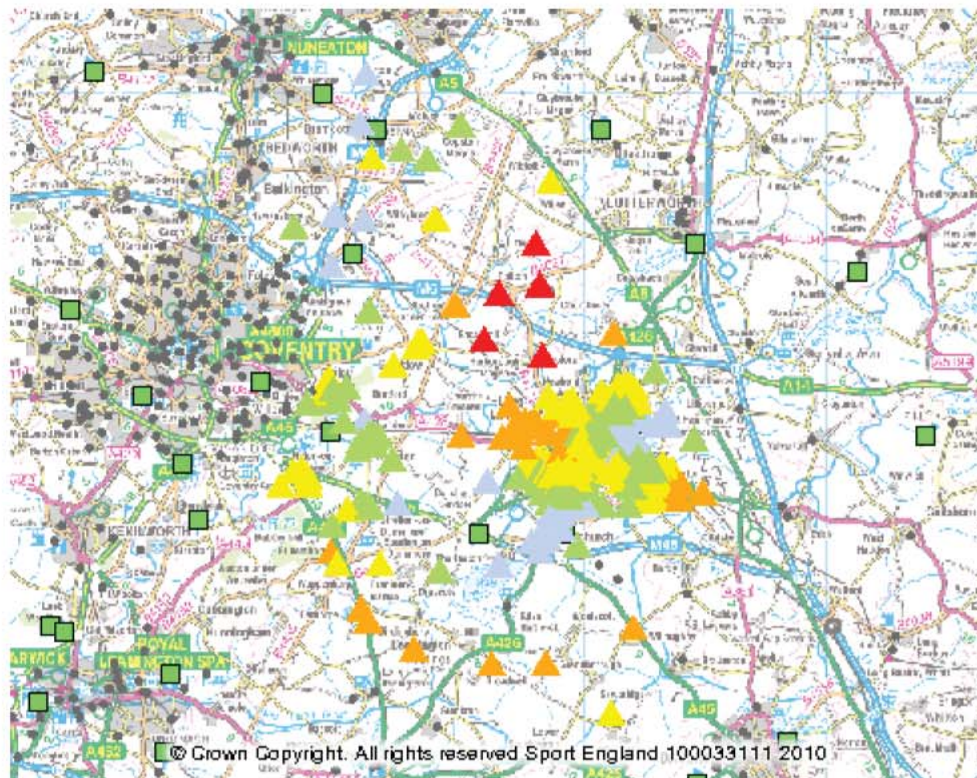


Region : West Midlands Region
 County : Warwickshire County
 Facility Type : Golf
 Facility Sub Type : Standard
 Facility Unit : Number Of Holes

Symbol	Range
Light Blue	0.15 - 0.76
Light Green	0.77 - 1.37
Red	2.6 - 3.2

England Ratio :	0.68
West Midlands Region Ratio:	0.60
Warwickshire County Ratio:	1.12
Rugby	1.03

Travel time



Facility type:

Golf

Sub Facility Type:

Standard

Local Authority:



Rugby District

Travel Type:

Travel Time

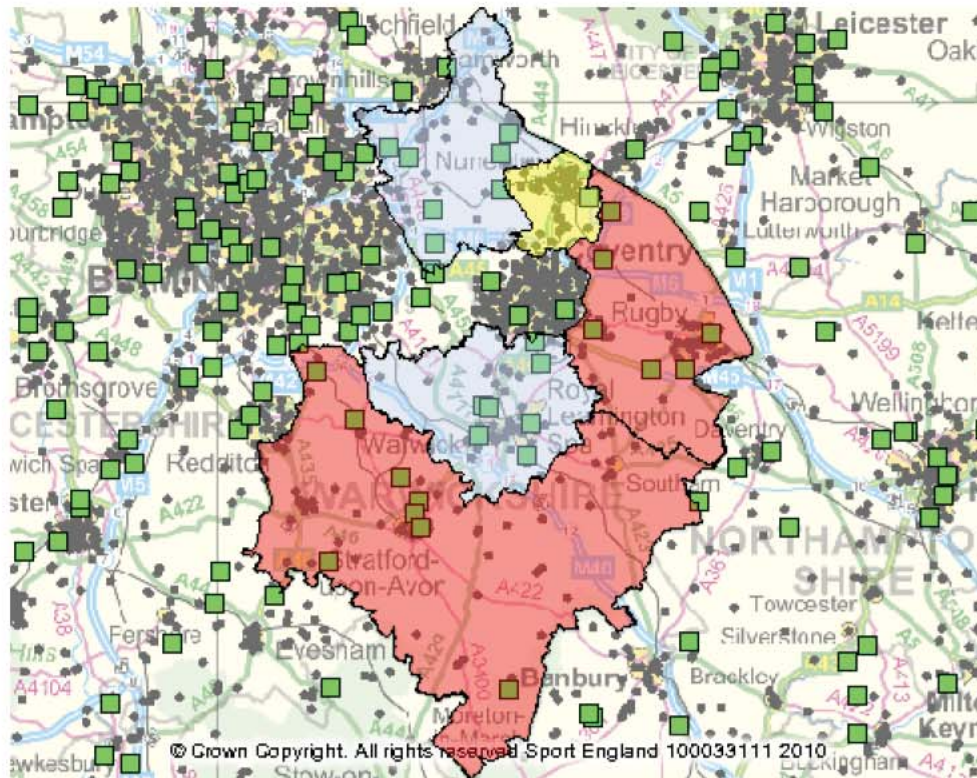
Mode of Travel:

By Car

Symbol	Range (minutes)
	3.53 - 5.57
	5.58 - 7.61
	7.62 - 9.65
	9.66 - 11.69
	11.7 - 13.73

Golf – par 3 courses

Provision per 1000 – authority wide

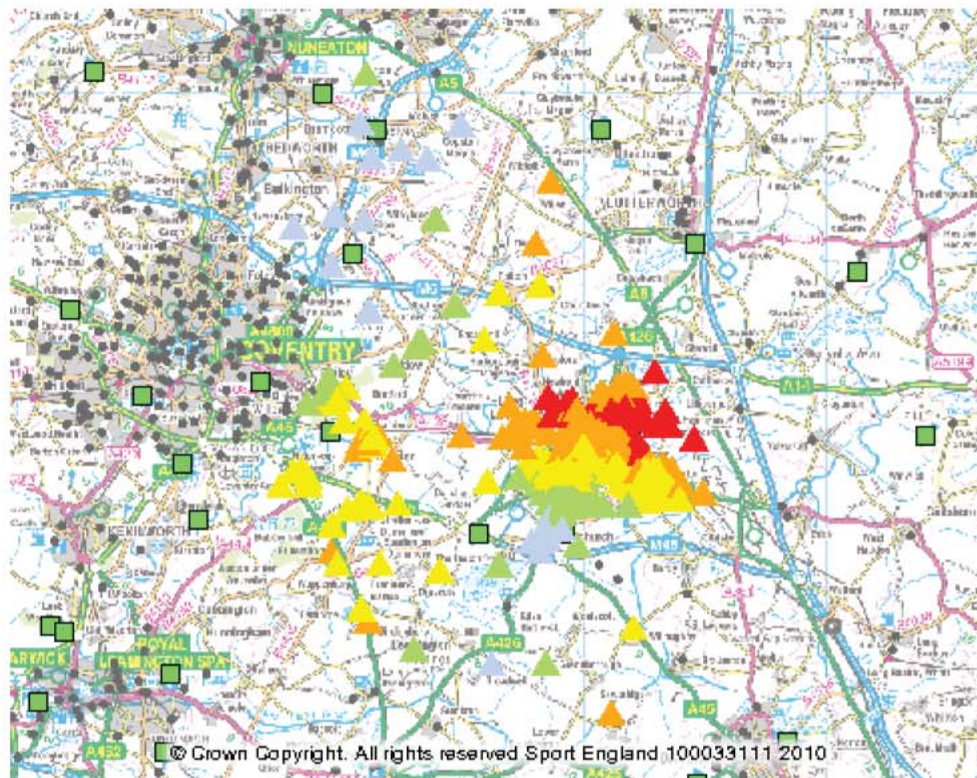


Region : West Midlands Region
 County : Warwickshire County
 Facility Type : Golf
 Facility Sub Type : Par 3
 Facility Unit : Number Of Holes

Symbol	Range
Light Blue	0.14 - 0.176
Yellow	0.213 - 0.248
Red	0.285 - 0.32

England Ratio :	0.06
West Midlands Region Ratio:	0.07
Warwickshire County Ratio:	0.23
Rugby	0.31

Travel time



Facility type:

Golf

Sub Facility Type:

Par 3

Local Authority:


Rugby District

Travel Type:

Travel Time

Mode of Travel:

By Car

Symbol	Range (minutes)
	4.3 - 7.32
	7.33 - 10.34
	10.35 - 13.36
	13.37 - 16.38
	16.39 - 19.4

APPENDIX 6

SPORTS HALL OPENING TIMES

ASHLAWN SCHOOL SPORTS CENTRE

FACILITY OPENING TIMES		
Day	Open-Close Timings	Accessibility
Weekend	9:00-17:00	Sports Club / Community Association
Monday-Friday	9:00-16:30	Private Use
Monday-Friday	16:30-20:00	Sports Club / Community Association

AVON VALLEY SCHOOL

FACILITY OPENING TIMES		
Day	Open-Close Timings	Accessibility
Monday-Friday	9:00-18:00	Private Use
Monday-Friday	18:00-22:00	Sports Club / Community Association

BILTON GRANGE SCHOOL

FACILITY OPENING TIMES		
Day	Open-Close Timings	Accessibility
Weekend	19:30-22:00	Sports Club / Community Association
Saturday	8:00-19:30	Private Use
Sunday	9:00-17:00	Sports Club / Community Association
Monday-Friday	8:00-17:00	Private Use
Monday-Friday	19:30-22:00	Sports Club / Community Association

BILTON SCHOOL MATHS AND COMPUTING COLLEGE

FACILITY OPENING TIMES		
Day	Open-Close Timings	Accessibility
Weekend	9:00-22:00	Sports Club / Community Association
Monday-Friday	9:00-18:00	Private Use
Monday-Friday	18:00-22:00	Sports Club / Community Association

BISHOP WULSTAN CATHOLIC SCHOOL

FACILITY OPENING TIMES		
Day	Open-Close Timings	Accessibility
Weekend	9:00-20:00	Sports Club / Community Association
Monday-Friday	9:00-16:30	Private Use
Monday-Friday	16:30-22:00	Sports Club / Community Association

GRIFFIN CENTRE

FACILITY OPENING TIMES		
Day	Open-Close Timings	Accessibility
Saturday	9:00-18:00	Sports Club / Community Association
Sunday	9:00-22:00	Sports Club / Community Association
Monday-Friday	9:00-18:00	Private Use
Monday-Friday	18:00-22:30	Sports Club / Community Association

HARRIS SCHOOL

FACILITY OPENING TIMES		
Day	Open-Close Timings	Accessibility
Saturday	9:00-20:00	Sports Club / Community Association
Sunday	12:00-20:00	Sports Club / Community Association

Monday-Friday	8:00-17:30	Private Use
Monday-Friday	18:00-22:00	Sports Club / Community Association

KEN MARRIOTT LEISURE CENTRE

FACILITY OPENING TIMES		
Day	Open-Close Timings	Accessibility
Weekend	9:00-22:00	Pay and Play
Monday	6:30-22:00	Pay and Play
Tuesday	6:30-22:00	Pay and Play
Wednesday	6:30-22:00	Pay and Play
Thursday	6:30-22:00	Pay and Play
Friday	6:30-22:00	Pay and Play

PRINCETHORPE COLLEGE

FACILITY OPENING TIMES		
Day	Open-Close Timings	Accessibility
Weekend	9:00-18:00	Sports Club / Community Association
Monday-Friday	9:00-18:00	Private Use
Monday-Friday	18:00-21:00	Sports Club / Community Association

RUGBY HIGH SCHOOL FOR GIRLS

FACILITY OPENING TIMES		
Day	Open-Close Timings	Accessibility
Monday-Friday	9:00-17:00	Private Use

RUGBY SCHOOL SPORTS CENTRE

FACILITY OPENING TIMES		
Day	Open-Close Timings	Accessibility
Saturday	9:00-18:00	Sports Club / Community Association
Monday-Friday	9:00-18:00	Private Use
Monday-Friday	18:00-22:00	Sports Club / Community Association

SPORTS CONNEXION LEISURE CLUB

FACILITY OPENING TIMES		
Day	Open-Close Timings	Accessibility
Every day	8:00-22:00	Registered Membership use

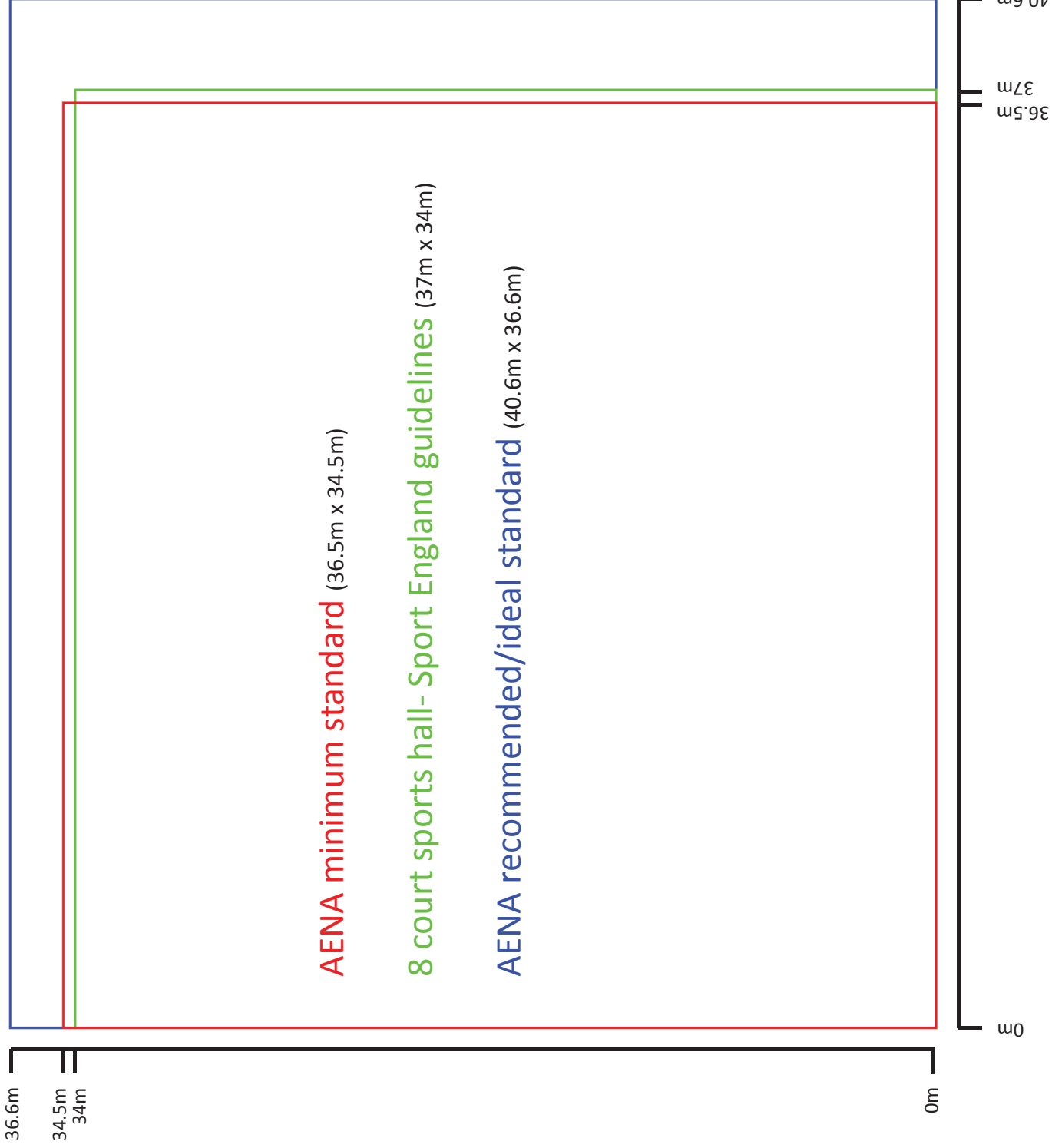
WARWICKSHIRE COLLEGE (RUGBY CAMPUS)

FACILITY OPENING TIMES		
Day	Open-Close Timings	Accessibility
Monday-Friday	9:00-17:00	Private Use
Monday-Friday	17:00-21:00	Sports Club / Community Association

FACILITY WEIGHTING CALCULATIONS

Site Name	Number of Badminton Courts	Number of peak time hours open	Percentage of peak hours open LIM	Percentage of peak hours open HIM	Weighted number of courts
ASHLAWN SCHOOL SPORTS CENTRE	1	0	0%	0%	0
ASHLAWN SCHOOL SPORTS CENTRE	4	0	0%	0%	0
AVON VALLEY SCHOOL	4	20	24%	49%	1
BILTON GRANGE SCHOOL	4	18	22%	44%	1
BILTON SCHOOL MATHS AND COMPUTING COLLEGE	1	36	44%	88%	0
BILTON SCHOOL MATHS AND COMPUTING COLLEGE	4	36	44%	88%	2
WARWICKSHIRE COLLEGE (RUGBY CAMPUS)	4	40	49%	98%	2
GRIFFIN CENTRE	4	36	44%	88%	2
HARRIS SCHOOL	1	33	40%	80%	0
HARRIS SCHOOL	4	33	40%	80%	3
KEN MARRIOTT LEISURE CENTRE	5	41	50%	100%	5
PRINCETHORPE COLLEGE	4	29.5	36%	72%	1
RUGBY HIGH SCHOOL FOR GIRLS	1	0	0%	0%	0
RUGBY SCHOOL SPORTS CENTRE	6	28	34%	68%	4
SPORTS CONNEXION LEISURE CLUB	9	41	50%	100%	
TOTALS	56				22
LIM - Low Intensity Management i.e. No opportunity for pay and play use, no staffed reception					
HIM - High Intensity Management i.e. Staffed reception enabling casual use.					

APPENDIX 7

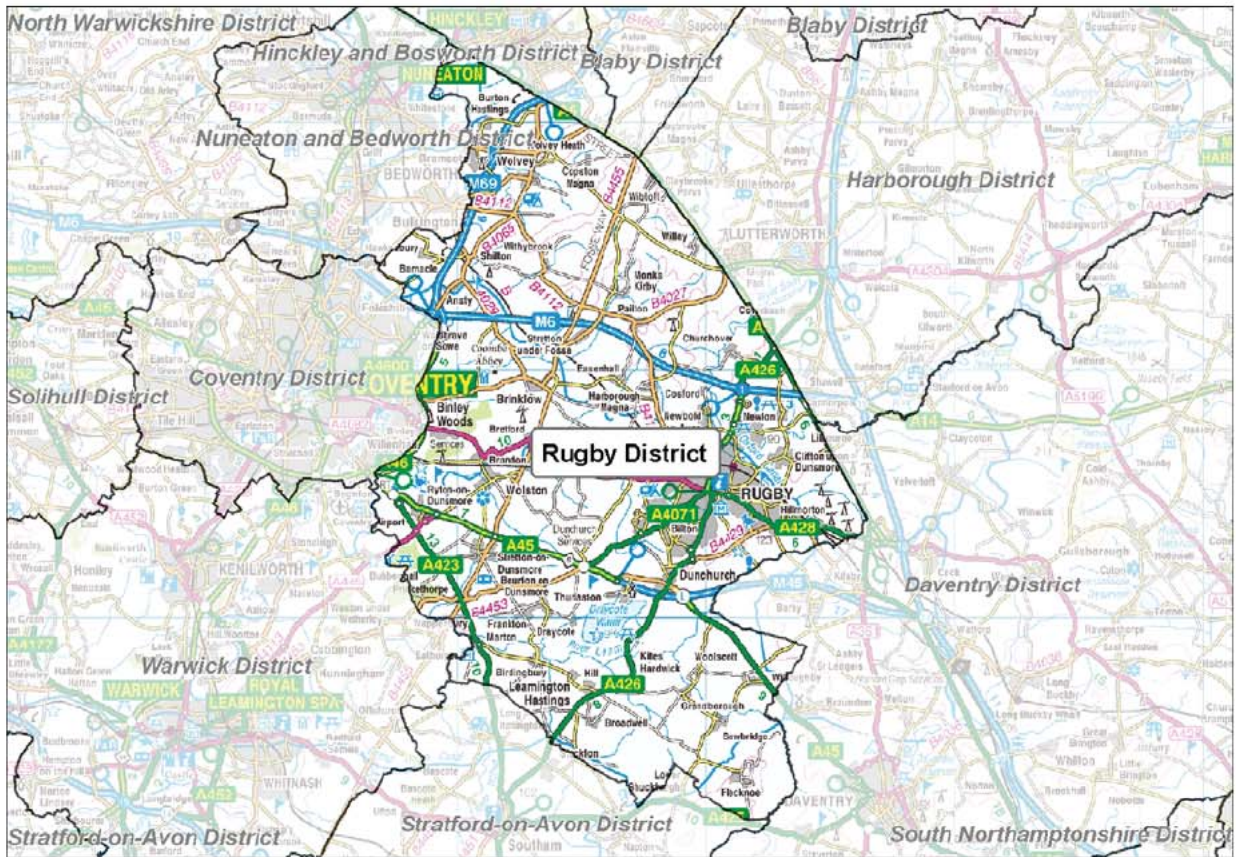


APPENDIX 8

LOCAL AREA DATA:

Rugby

Season 07/08



Rugby

FOOTBALL KEYFACTS - Rugby

The findings of this report are based on data collected through the annual Football Association (FA) and County FA's (CFAs) affiliation process and stored in the County Administration System (CAS).

Since the production of the Season 06/07 Local Area Data Reports, significant effort has been put into improving data from the Country Administration System (CAS). In some instances, this has resulted in changes to the 06/07 totals compared to how they appeared in the last version of the report.

Whilst the data provided is robust it is not claimed to be 100% accurate. There are a number of reasons why some errors will exist and it is critical that errors are reported back to The FA and/or CFAs so we can continually improve the quality of the information available. Please report any errors or omissions to either your local County FA or Data@TheFA.com.

Each year, the County Football Associations and The Football Association will work hard to improve methods for capturing data. As a result, in some circumstances, there may appear to be shifts in participation which are directly due to refined/improved data entry rather than actual growth or decline. Please ensure that in assessing trends, you take advice from the respective County FA.

Demographics

- Rugby has a population of **87,453**(Census 2001).
- **6.0%** of the population come from Ethnic Minority communities.
- **21.7%** of the adult population (16+) participate in physical activity three times per week for 30 minutes as compared to a national average of **21.3%** (Sport England Active People Survey).

Clubs and Teams

- Rugby has a total of **140** teams.
- Of the **140** teams operating in Rugby, **51 (36.4%)** are adult teams, **65 (46.4%)** are youth teams and **24 (17.1%)** are Mini-Soccer teams and **0 (0.0%)** are small sided.

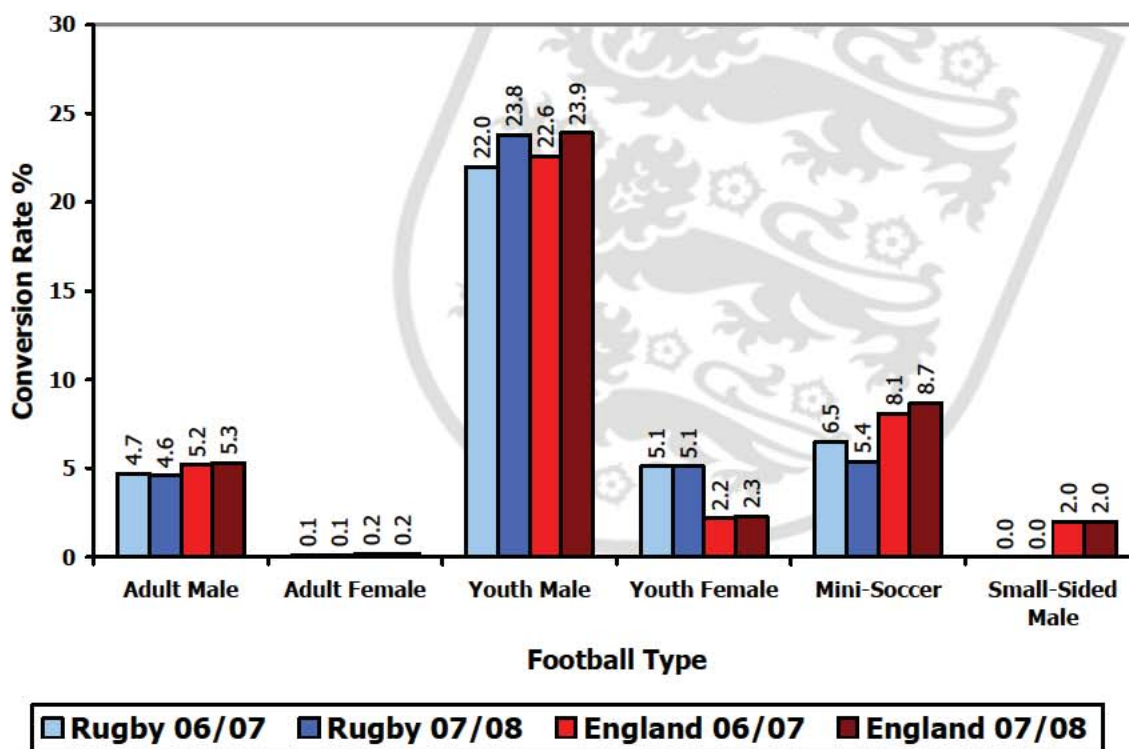
The following table and graph show football participation rates in the authority compared to Regional and National rates. These are calculated by comparing the number of persons playing football to the relevant population.

We estimate the number of individuals playing football by multiplying the number of teams by the average number of players involved in the different forms of football. We assume 15 players are involved in an 11 a side squad, 10 players in a mini soccer team squad and 8 in a small-sided team squad.

Rugby

These numbers are then expressed as a proportion of the relevant population. This creates a percentage of the population at each age group involved in playing football, called a 'conversion rate'. We can then compare these conversion rates to Regional and National averages.

Figure 1: Conversion rate trends for Rugby 06/07 and 07/08



Participation data is based on:

- 15 players in an 11-a-side team, 10 in a mini-soccer team and 8 in a small sided team
- Adult= 17-44 years, Youth = 11-16 years, Mini = 7-10 years, Small sided = 17-44yrs.

- **63** Youth and Mini-soccer teams of the **89** total (**70.8%**) play in a club that has achieved a Charter Standard Award as compared to a national average of **46.8%**.
- The number of teams **has decreased by 3 teams** in Rugby from season 06/07 to season 07/08.

Rugby

County Administration System (CAS) data

Data from CAS show that there are 140 football teams with a playing base in Rugby during season 07/08.

Table 1: Teams, players and conversion rates for Rugby, West Midlands and England

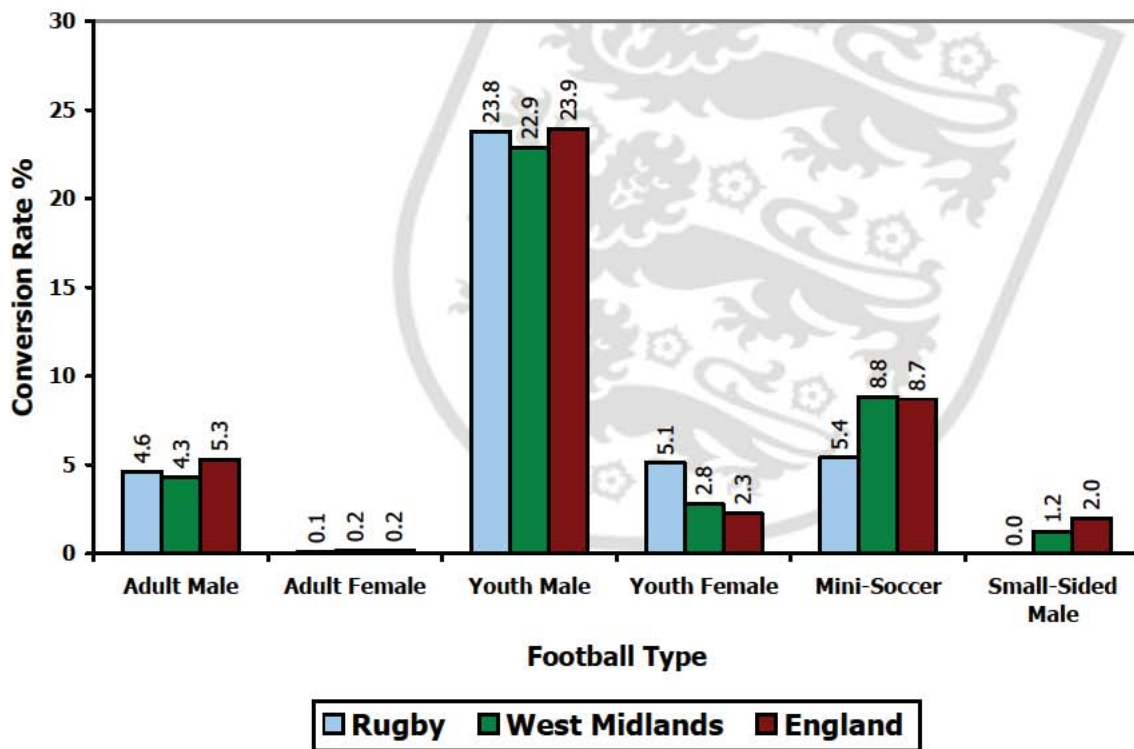
Rugby										
	Adult 11-a-side		Youth 11-a-side		Mini-Soccer	Adult Small-sided		Youth Small-sided		All Forms
	Male	Female	Male	Female	Mixed	Male	Female	Male	Female	Total
No of Teams 07/08	50	1	54	11	24	0	0	0	0	140
No of Teams 06/07	52	1	50	11	29	0	0	0	0	143
Variance	-3.8%	0.0%	8.0%	0.0%	-17.2%	0.0%	0.0%	0.0%	0.0%	-2.1%
No of Players 07/08	750	15	810	165	240	0	0	0	0	1980
No of Players 06/07	780	15	750	165	290	0	0	0	0	2000
Conversion Rate 07/08	4.6%	0.1%	23.8%	5.1%	5.4%	0.0%	0.0%	0.0%	0.0%	4.5%
Conversion Rate 06/07	4.7%	0.1%	22.0%	5.1%	6.5%	0.0%	0.0%	0.0%	0.0%	4.6%
Variance	-0.2%	0.0%	1.8%	0.0%	-1.1%	0.0%	0.0%	0.0%	0.0%	0.0%
West Midlands										
West Midlands Conversion Rate 07/08	4.3%	0.2%	22.9%	2.8%	8.8%	1.2%	0.0%	0.1%	0.1%	5.1%
West Midlands Conversion Rate 06/07	4.5%	0.2%	22.2%	2.7%	8.3%	0.8%	0.0%	0.0%	0.1%	4.9%
Variance	-0.2%	0.0%	0.7%	0.1%	0.5%	0.4%	0.0%	0.1%	0.0%	0.2%
ENGLAND										
England Conversion 07/08	5.3%	0.2%	23.9%	2.3%	8.7%	2.0%	0.0%	0.2%	0.3%	5.8%
England Conversion 06/07	5.2%	0.2%	22.6%	2.2%	8.1%	2.0%	0.0%	0.1%	0.2%	5.5%
Variance	0.1%	0.0%	1.3%	0.1%	0.6%	0.0%	0.0%	0.0%	0.1%	0.2%

Notes:

- All conversion rate figures in this table are subject to rounding, so whilst the seasonal figures in the table may not imply a change, the variance may indicate a drop or increase as the raw season figures will differ.
- Due to data corrections, the 06/07 figures as they appear in this table have been updated since the release of the Local Area Data Report for Season 06/07. The figures provided here represent the accepted and current version of the data.

Rugby

Figure 2: Conversion rates for Rugby



Participation data is based on:

- 15 players in an 11-a-side team, 10 in a mini-soccer team and 8 in a small sided team
- Adult= 17-44 years, Youth = 11-16 years, Mini = 7-10 years, Small sided = 17-44yrs.

Rugby

CLUBS

Rugby Clubs

- In Rugby the club to team ratio is 1:2.6 (i.e each club runs on average 2.6 teams). This compares to a national ratio of 1:2.4 and a regional ratio of 1:2.1.
- 7 of the youth clubs in Rugby just run youth 11-a-side teams and do not have mini-soccer teams.
- There are 2 clubs fielding both youth and adult teams.
- 73.6% of clubs in Rugby have adult teams, compared to national and regional averages of 67.4% and 63.0% respectively.
- 78.4% of adult-only clubs in Rugby have only one team.

Table 2 shows Rugby based clubs with numbers of associated teams for each form of football during season 06/07 and season 07/08. Finally, it shows the status of clubs that have been awarded The FA Charter Standard award and the level of that award.

Where there are 0 teams shown in all the number columns, the status will reflect the reason for this. A status of 'DE' shows that a club does not exist in that season and a status of 'SS' shows that the club has only small-sided teams for that season. The clubs listed do not include counts of small-sided teams due to the different ways that small-sided teams affiliate.

The 'BC Link', 'DC Link' and 'CC Link' labels which may appear in the Charter Standard column indicate linked Basic, Development and Community level Charter Standard clubs.

Table 2: Summary of football clubs in Rugby

Club Name	Club ID	06/07 Teams					07/08 Teams					Charter Standard 07/08
		Status	Adult	Youth	Mini	Total	Status	Adult	Youth	Mini	Total	
30 Signal Regiment	40404		4	0	0	4		4	0	0	4	
A C Victoria	113205		1	0	0	1		1	0	0	1	
A E I Rugby	112015		3	0	0	3		3	0	0	3	
Admirals Girls J	142566		1	1	0	2		1	1	0	2	BCLink
Admirals J	114018		0	3	3	6		0	3	4	7	Charter
Barley Mow Rangers	113655		2	0	0	2		1	0	0	1	
Bilton Ajax J	114040		0	4	1	5		0	8	2	10	
Bilton Social	112215		1	0	0	1		1	0	0	1	
Binley Woods Junior	114042		0	5	3	8		0	6	2	8	

Rugby

Club Name	Club ID	06/07 Teams					07/08 Teams					Charter Standard 07/08
		Status	Adult	Youth	Mini	Total	Status	Adult	Youth	Mini	Total	
Black Horse United	148424		1	0	0	1		2	0	0	2	
Bourton & Frankton	112272		2	0	0	2		2	0	0	2	Charter
Bourton & Frankton Juniors	207388	DE	0	0	0	0		0	1	0	1	BCLink
Brinklow Girls	142819	DE	0	0	0	0		0	0	1	1	DCLink
Brinklow Saturday	140681		1	0	0	1		2	0	0	2	DCLink
Brownsover F.C.	113654		1	0	0	1	DE	0	0	0	0	
Bull	141859		1	0	0	1		1	0	0	1	
C R C Juniors	206771	DE	0	0	0	0		0	0	1	1	
Chase	112527		2	0	0	2		2	0	0	2	
Church Lawford	142627		1	0	0	1		1	0	0	1	
Community Relations	112501		1	0	0	1		1	0	0	1	
Coventry City Development Girls	142143		0	2	0	2		0	3	0	3	BCLink
Coventry City Development Ladies	149834		1	0	0	1		1	0	0	1	BCLink
Devonshire Arms	114147		2	0	0	2		2	0	0	2	
Dunchurch	113494		2	0	0	2		1	0	0	1	
Dynamo Alwyn	212059	DE	0	0	0	0		1	0	0	1	
Eastlands J	207207	DE	0	0	0	0		0	0	1	1	
Fone A Car Rugby	143253		1	0	0	1		1	0	0	1	
Hillmorton	113601		2	0	0	2		1	0	0	1	
Hillmorton Red Lion	113478		1	0	0	1		1	0	0	1	
House	113049		1	0	0	1		1	0	0	1	
Jolly Abbott	113195		1	0	0	1		1	0	0	1	
Legion	149297		1	0	0	1		1	0	0	1	
London House F.C.	112710		1	0	0	1	DE	0	0	0	0	
Long Lawford	114077		1	0	0	1		1	0	0	1	
Malt Shovel Ryton	127431		1	0	0	1		1	0	0	1	
Monk	207430	DE	0	0	0	0		1	0	0	1	
N E D Building Service F.C.	148671		1	0	0	1	DE	0	0	0	0	
Newbold Revel	113268		1	0	0	1		1	0	0	1	
Oakfield F.C.	144024		1	0	0	1	DE	0	0	0	0	
Onley Park	113112	DE	0	0	0	0		1	0	0	1	

Rugby

Club Name	Club ID	06/07 Teams					07/08 Teams					Charter Standard 07/08
		Status	Adult	Youth	Mini	Total	Status	Adult	Youth	Mini	Total	
Paddox Albion	207674	DE	0	0	0	0		1	0	0	1	
Priors Marston	113051		1	0	0	1		1	0	0	1	
Q G SIGNALS (30 Signal Regiment)	208023	DE	0	0	0	0		1	0	0	1	
Rugby	113271		1	0	0	1		1	0	0	1	
Rugby Barbarians F.C.	144873		1	0	0	1	DE	0	0	0	0	
Rugby Oak F.C.	114163		1	0	0	1	DE	0	0	0	0	
Rugby Prince of Wales	113084		1	0	0	1		1	0	0	1	
Rugby Town A	114200		2	1	0	3		2	1	0	3	Comm.
Rugby Town Boys	112991		0	6	0	6		0	6	0	6	CCLink
Rugby Town Colts	113722		1	10	0	11		0	9	0	9	CCLink
Rugby Town Girls	113103		0	5	1	6		0	4	1	5	CCLink
Rugby Town Juniors	113062		0	14	20	34		0	10	11	21	CCLink
Rugby Town Juniors (Saturday)	144695		0	5	0	5		0	8	0	8	CCLink
Shilton	113632		2	0	0	2		2	0	0	2	
Sporting Legends	144589		1	0	0	1		1	0	0	1	
Webb Ellis	149300		1	0	0	1		1	0	0	1	
Withymoor Colts Girls	113604		0	5	1	6		0	5	1	6	
Wolston Athletic	207551	DE	0	0	0	0		1	0	0	1	
Woodlands Athletic	144219		1	0	0	1		1	0	0	1	
Totals			53	61	29	143		51	65	24	140	

Notes:

- The 'BC Link', 'DC Link' and 'CC Link' labels which may appear in the Charter Standard column indicate linked Basic, Development and Community level Charter Standard clubs.

Charter Standard

Of the 53 clubs in Rugby, 3 have achieved Charter Standard. The level of status obtained by these clubs is outlined in table 3.

Table 3: Clubs with Charter Standard in Rugby

Status	Rugby		England	
	Number	Percentage	Number	Percentage
Community Club	1	1.9%	339	1.0%

Rugby

Status	Rugby		England	
	Number	Percentage	Number	Percentage
Development Club	0	0.0%	355	1.0%
Basic Charter Standard	2	3.8%	2524	7.1%
Total	3	5.7%	3218	9.1%

In terms of teams, **70.8%** of youth and mini-soccer teams play within a club of Charter Standard status. This compares to a national average of **46.8%** with a National Game Strategy target of 75% of youth and mini-soccer teams playing within a Charter Standard Club by 2012.

Club Ground Locations

The following map indicates those clubs with six or more teams and each team's ground location. It also shows the location of the secondary schools in Rugby. It may be that some clubs that have 6 or more teams are not mapped particularly where the team does not have a regular dedicated ground or where there is insufficient information to locate the team's ground. Also where two or more clubs play at the same ground only one will show up on the map as the points for all will be placed precisely on top of one another.

Rugby

Figure 3: Location of clubs and secondary schools.

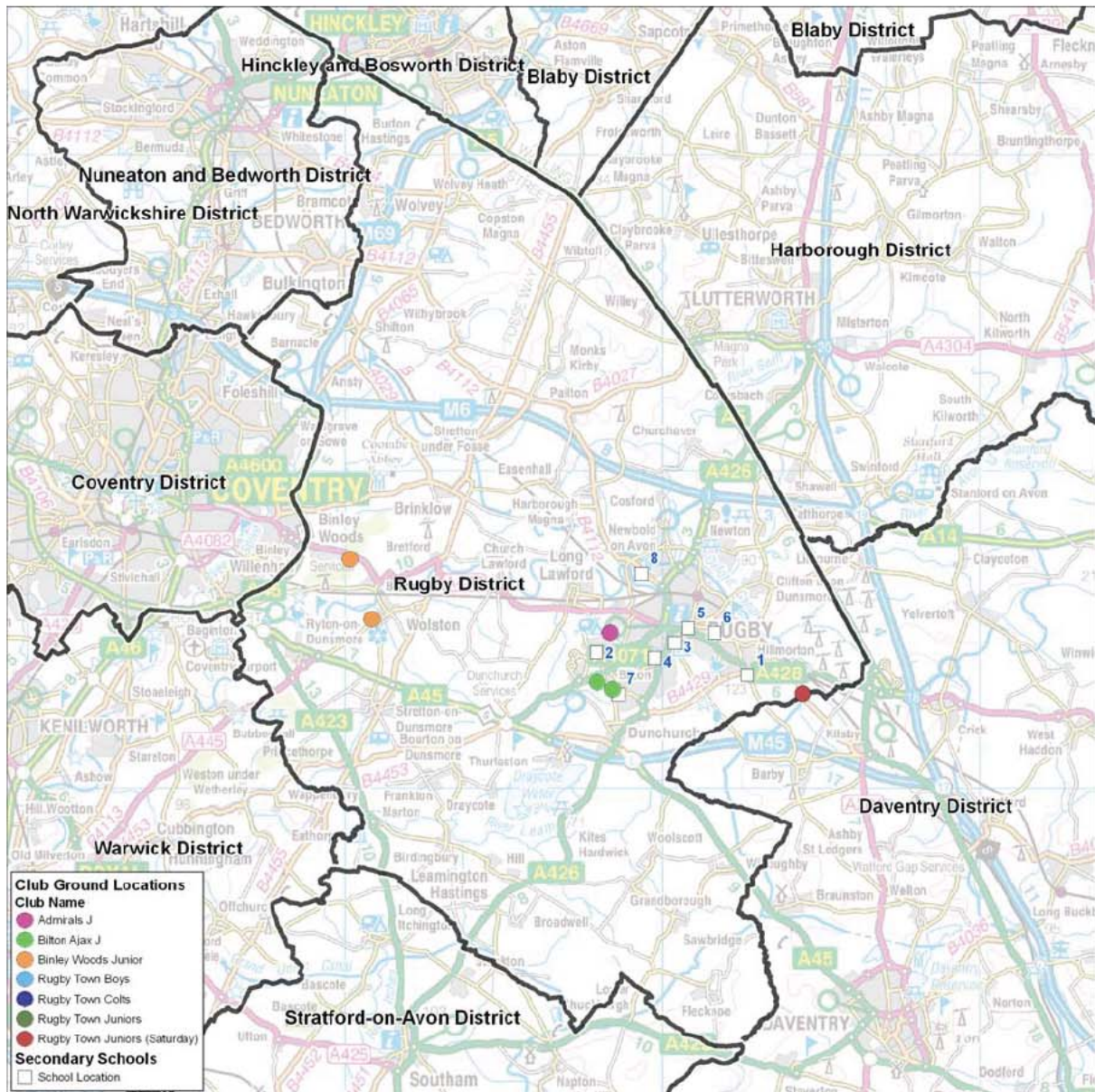


Table 4: Secondary Schools in Rugby

No	School	No	School
1	Ashlawn School	5	Lawrence Sheriff School
2	Bilton School - A Maths and Computing College	6	Rugby College of Further Education
3	Bishop Wulstan Catholic School	7	Rugby High School
4	Harris School	8	The Avon Valley School and Performing Arts College

Rugby

TEAMS

Rugby Teams

- There is a total of 140 teams playing competitive football in Rugby excluding small-sided teams.
- According to the CAS data, there are 12 female teams playing in Rugby. This is 8.6% of the total number of teams.
- The peak youth age is U11, with 13 teams playing at this level.

Table 5 shows the number of Rugby based teams for each form of football.

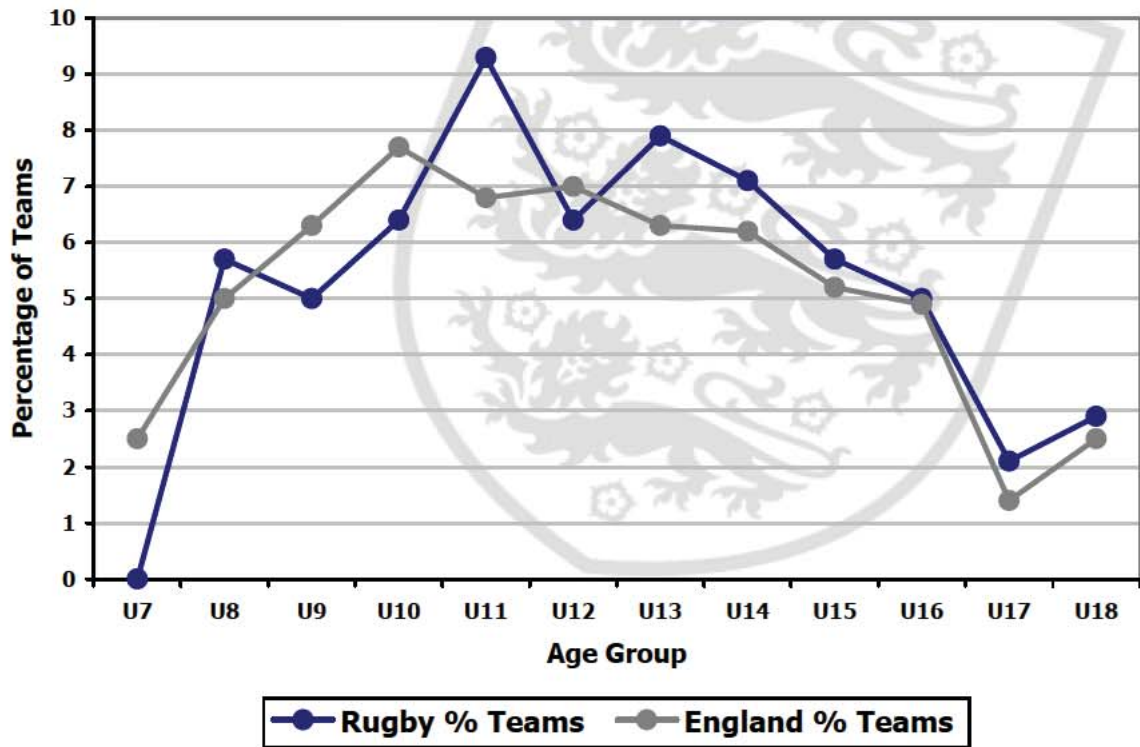
Table 5: Number of teams at each age group

Age Group	Total No. of Teams	No. of Mixed Teams	No. of Male Teams	No. of Female Teams
U8	8	8	0	0
U9	7	7	0	0
U10	9	9	0	0
U11	13	0	11	2
U12	9	0	7	2
U13	11	0	9	2
U14	10	0	7	3
U15	8	0	7	1
U16	7	0	6	1
U17	3	0	3	0
U18	4	0	4	0
Open Aged	50	0	49	1
Veterans	1	0	1	0
Totals	140	24	104	12

The following figure plots the change in the percentage of youth teams across age groups in Rugby and highlights a peak number of teams in the U11 age group. Where there is no line on the graph for 'Teams within LA %', there are no youth teams playing in the Local Authority. The national percentages for each age group are also included for comparison.

Rugby

Figure 4: Youth teams as a proportion of total teams in Rugby



Rugby

LEAGUES

Leagues with Rugby Teams

There are 59 leagues containing teams from Rugby (see table 6).

- In total 11 of these leagues are adult leagues.
- There are 8 teams in Rugby that have not been assigned to a league. Where teams have not been assigned to a league, this data could potentially be highlighting teams playing in 'friendlies' only or it could be highlighting data missing from CAS.

Table 6 summarises the main coverage of football in Rugby, in respect of the age ranges of teams, numbers of teams and leagues in which they participate.

Table 6: League structures in Rugby

League	Age Group	No. of Teams in League	No. of Rugby Teams in League	% of Teams in League Playing in Rugby
Birmingham County Womens League	Open Aged	21	1	4.8
British Gas Business Southern League	Open Aged	64	1	1.6
Central Warwickshire Girls League	U13	12	1	8.3
Central Warwickshire Girls League	U14	32	2	6.3
Central Warwickshire Girls League	U16	30	2	6.7
Central Warwickshire Over 35S League	Veterans	23	1	4.3
Coventry & Central Warwickshire League	Open Aged	20	2	10.0
Coventry & District Sun League	Open Aged	84	2	2.4
Coventry Alliance League	Open Aged	75	13	17.3
Coventry District & Warwickshire League	Open Aged	9	1	11.1
Coventry Minor Football League	U8	26	3	11.5
Coventry Minor Football League	U11	43	5	11.6
Coventry Minor Football League	U12	31	2	6.5
Coventry Minor Football League	U13	39	7	17.9