

The increasing pressure for development is leading to more development sites being brought forward through the planning process on land that is crossed by NGET.

NGET advocates the high standards of design and sustainable development forms promoted through national planning policy and understands that contemporary planning and urban design agenda require a creative approach to new development around high voltage overhead lines and other NGET assets.

Further Advice

NGET is happy to provide advice and guidance to the Council concerning their networks. Please see attached information outlining further guidance on development close to National Grid assets.

If we can be of any assistance to you in providing informal comments in confidence during your policy development, please do not hesitate to contact us.

To help ensure the continued safe operation of existing sites and equipment and to facilitate future infrastructure investment, NGET wishes to be involved in the preparation, alteration and review of plans and strategies which may affect their assets. Please remember to consult NGET on any Development Plan Document (DPD) or site-specific proposals that could affect our assets.

We would be grateful if you could add our details shown below to your consultation database, if they are not already included:

nationalgrid.uk@avisonyoung.com

Avison Young
Central Square
Forth Street
Newcastle upon Tyne
NE1 3PJ

box.landandacquisitions@nationalgrid.com

National Grid Electricity Transmission
National Grid House
Warwick Technology Park
Gallows Hill
Warwick, CV34 6DA

If you require any further information in respect of this letter, then please contact us.

Yours faithfully,



For and on behalf of Avison Young

NGET is able to provide advice and guidance to the Council concerning their networks and encourages high quality and well-planned development in the vicinity of its assets.

Developers of sites crossed or in close proximity to NGET assets should be aware that it is NGET policy to retain existing overhead lines in-situ, though it recognises that there may be exceptional circumstances that would justify the request where, for example, the proposal is of regional or national importance.

NGET's *'Guidelines for Development near pylons and high voltage overhead power lines'* promote the successful development of sites crossed by existing overhead lines and the creation of well-designed places. The guidelines demonstrate that a creative design approach can minimise the impact of overhead lines whilst promoting a quality environment. The guidelines can be downloaded here: <https://www.nationalgrid.com/document/130626/download>

The statutory safety clearances between overhead lines, the ground, and built structures must not be infringed. Where changes are proposed to ground levels beneath an existing line then it is important that changes in ground levels do not result in safety clearances being infringed. National Grid can, on request, provide to developers detailed line profile drawings that detail the height of conductors, above ordnance datum, at a specific site.

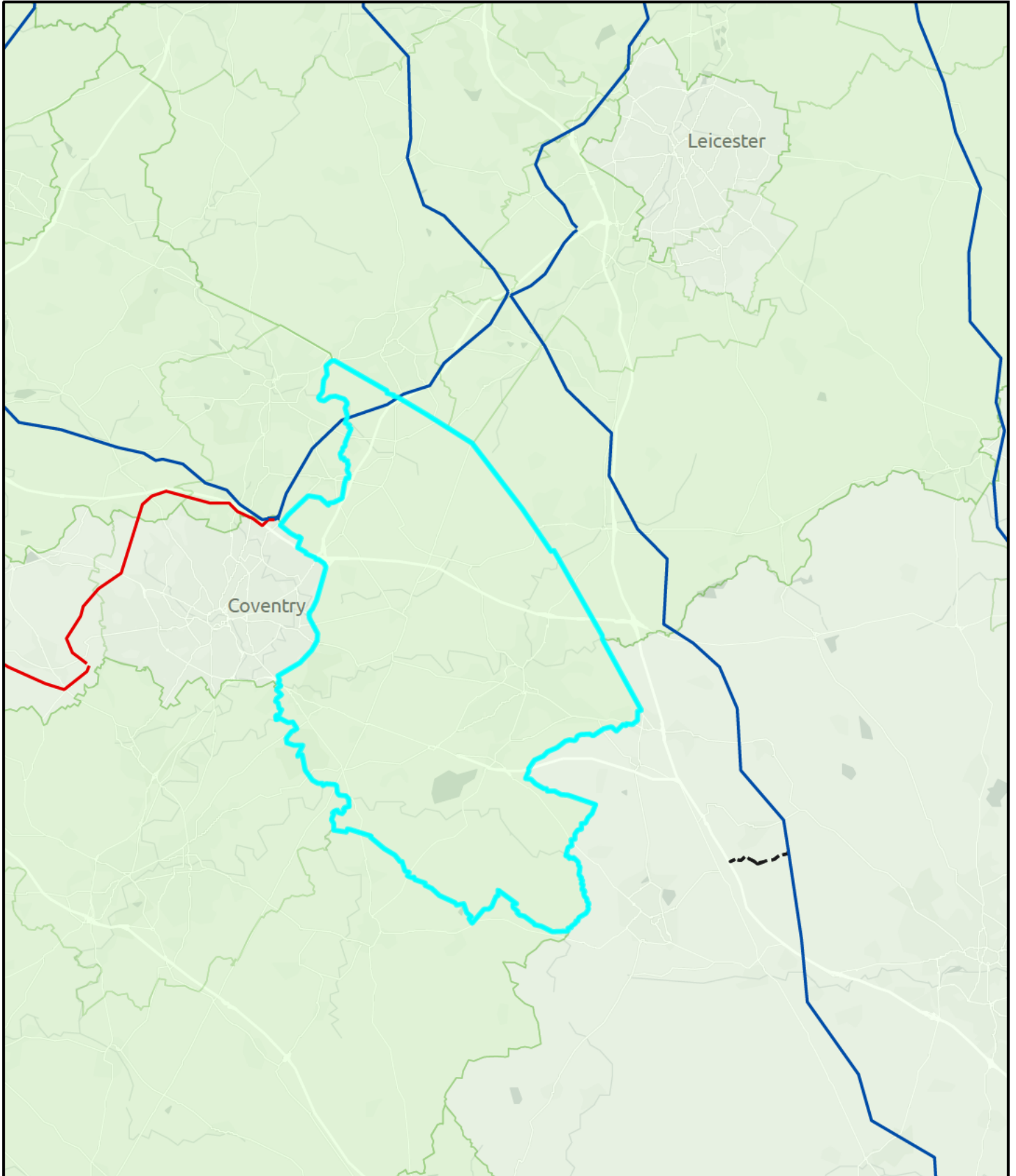
NGET's statutory safety clearances are detailed in their *'Guidelines when working near National Grid Electricity Transmission assets'*, which can be downloaded here: www.nationalgrid.com/network-and-assets/working-near-our-assets

How to contact NGET

If you require any further information in relation to the above and/or if you would like to check if NGET's transmission networks may be affected by a proposed development, please visit the website: <https://lsbud.co.uk/>

For local planning policy queries, please contact: nationalgrid.uk@avisonyoung.com

Rugby Borough Council: National Grid Asset Map



25/01/2024, 10:11:28

Electric_Assets_4020

— 400

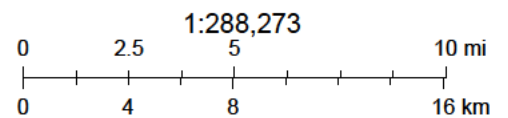
— 275

Electric_Assets_7634

- - - 132 & Below

Development_Plan_Monitoring_v2_977_5701

Development_Plan_Monitoring_v2_977



Contains OS data © Crown Copyright and database right 2023
Contains data from OS Zoomstack