

Our Ref: / 15B901605

25 January 2024

Rugby Borough Council
localplan@rugby.gov.uk
via email only

Dear Sir / Madam

**Rugby Borough Local Plan – Issues and Options Consultation
October 2023 – February 2024
Representations on behalf of National Gas Transmission**

National Gas Transmission has appointed Avison Young to review and respond to local planning authority Development Plan Document consultations on its behalf. We are instructed by our client to submit the following representation with regard to the current consultation on the above document.

About National Gas Transmission

National Gas Transmission owns and operates the high-pressure gas transmission system across the UK. In the UK, gas leaves the transmission system and enters the UK's four gas distribution networks where pressure is reduced for public use.

National Gas Transmission assets within the Plan area

Following a review of the above Development Plan Document, we have identified one or more National Gas Transmission assets within the Plan area. Details of National Gas Transmission assets are provided below.

Asset Description
Gas Transmission Pipeline, route: ALREWAS TO CHURCHOVER
Gas Transmission Pipeline, route: DUDDINGTON TO CHURCHOVER
Churchover_8147 - AGI Gas Transmission Facility
Churchover_CompStn_7215 - COMP Gas Transmission Facility
Gas Transmission Pipeline, route: CHURCHOVER TO WORMINGTON
Churchover_comp_Tee_3810 - AGI Gas Transmission Facility
Gas Transmission Pipeline, route: CHURCHOVER COMP TEE TO HONEYBOURNE
Frankton_8711 - AGI Gas Transmission Facility

A plan showing details and locations of National Gas Transmission's assets is attached to this letter. Please note that this plan is illustrative only.

Please also see attached information outlining further guidance on development close to National Gas Transmission assets.

Utilities Design Guidance



The increasing pressure for development is leading to more development sites being brought forward through the planning process on land that is crossed by National Gas Transmission infrastructure.

National Gas Transmission advocates the high standards of design and sustainable development forms promoted through national planning policy and understands that contemporary planning and urban design agenda require a creative approach to new development around underground gas transmission pipelines and other National Gas Transmission assets.

Further Advice

National Gas Transmission is happy to provide advice and guidance to the Council concerning their networks. If we can be of any assistance to you in providing informal comments in confidence during your policy development, please do not hesitate to contact us.

To help ensure the continued safe operation of existing sites and equipment and to facilitate future infrastructure investment, National Gas Transmission wishes to be involved in the preparation, alteration and review of plans and strategies which may affect their assets. Please remember to consult National Gas Transmission on any Development Plan Document (DPD) or site-specific proposals that could affect National Gas Transmission's assets. We would be grateful if you could check that our details as shown below are included on your consultation database:

nationalgas.uk@avisonyoung.com

Avison Young
Central Square
Forth Street
Newcastle upon Tyne
NE1 3PJ

National Gas Transmission
National Grid House
Warwick Technology Park
Gallows Hill
Warwick, CV34 6DA

If you require any further information in respect of this letter, then please contact us.

Yours faithfully,

For and on behalf of Avison Young

National Gas Transmission is able to provide advice and guidance to the Council concerning their networks and encourages high quality and well-planned development in the vicinity of its assets.

Gas assets

High-Pressure Gas Pipelines form an essential part of the national gas transmission system and National Gas Transmission's approach is always to seek to leave their existing transmission pipelines in situ. Contact should be made with the Health and Safety Executive (HSE) in respect of sites affected by High-Pressure Gas Pipelines.

National Gas Transmission have land rights for each asset which prevents the erection of permanent/ temporary buildings, or structures, changes to existing ground levels, storage of materials etc. Additionally, written permission will be required before any works commence within the National Gas Transmission's 12.2m building proximity distance, and a deed of consent is required for any crossing of the easement.

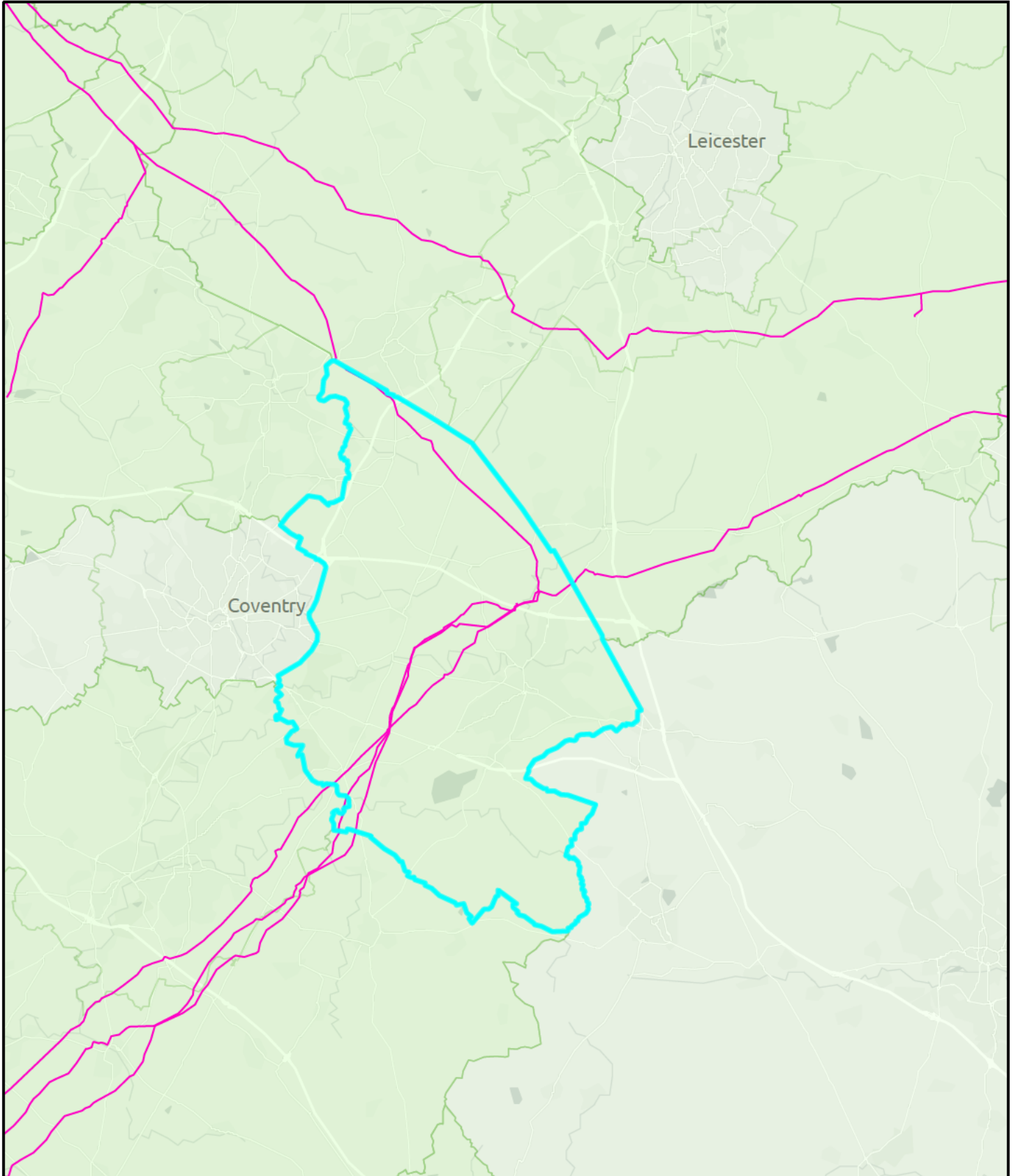
National Gas Transmission's '*Guidelines when working near National Gas Transmission assets*' can be downloaded here: <https://www.nationalgas.com/document/82951/download>

How to contact National Gas Transmission




If you require any further information in relation to the above and/or if you would like to check if National Gas Transmission's transmission networks may be affected by a proposed development, please visit the website: <https://lsbud.co.uk/>

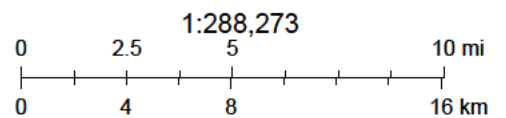
For local planning policy queries, please contact: nationalgas.uk@avisonyoung.com

Rugby Borough Council: National Gas Asset Map



25/01/2024, 10:11:40

-  Gas_Assets_6495
-  Development_Plan_Monitoring_v2_977_5701
-  Development_Plan_Monitoring_v2_977



Contains OS data © Crown Copyright and database right 2023
Contains data from OS Zoomstack