



Rugby Community Safety Partnership Plan

2023 -24

Final 05.12.2023

Introduction

This Strategy outlines the legal duties that the Rugby Community Safety Partnership (RCSP) are required to adhere to. Provides a clear strategic aim. Identifies a delivery structure and what the desired outcomes will be.

Over the last 5 years there have been fundamental changes to how the RCSP is managed by staff at Rugby Borough Council. A range of new legal duties have been given to Local Authorities. Additionally the Safer Warwickshire Partnership Board and sub groups have taken responsibility to tackle some of the legal duties with contribution and participation from RCSP. There has also been two reviews of the RCSP and how it works and areas identified where improvements can be made. The Strategic assessment which identifies the priorities has been reviewed and it has been identified that RCSP should focus on some local priorities as well as ensuring contribution to the wider priorities set out in the strategic assessment.

This Strategy will identify how and what the RCSP aims to deliver in light of the changes that have occurred.

Legal Duties

The role of the RCSP Board is to focus on ensuring the statutory functions of Community Safety Partnership are discharged as follows:

- Prepare a 'strategic assessment' each year
- Prepare a 'partnership plan' and revise it each year
- Formulate and implement strategies that cover;
 - i. Reduction of crime and disorder – Antisocial Behaviour, CSP strategic priorities and other behaviour adversely affecting the local environment
 - ii. Combatting the misuse of drugs, alcohol and other substances
 - iii. Reduction of reoffending
 - iv. Serious Violence prevention - Preventing people from becoming involved in serious violence (including as victims) and Reducing instances of serious violence

Appendix 1 shows how each of these strategies are formulated and implemented either directly through the RCSP or through wider Countywide Strategies which the RCSP contributes to.

The RCSP strategy is also required to have taken cognisance with the Police and Crime Commissioner (PCC) for Warwickshire Police and Crime Plan. The current Police and Crime Plan covering the period 2021-25 was published in 2022.

The plan outlines five priorities:

- Fight crime and reduce reoffending

- Deliver visible and effective policing
- Keep people safe and reduce harm
- Strengthen communities
- Deliver better justice for all

Our strategic priorities and action plan will align and deliver on a number of the Police and Crime Plan priorities.

The RCSP strategy also aligns to the Safer Warwickshire Partnership Community Safety Agreement. This currently covers the period 2022-26, with the following strategic ambitions:

- Address the causes of violence
- Tackle discrimination in all its forms
- Safe, Healthy and Empowered communities.

Overall Aim and Objectives

Aim

The RCSP Board aims to create safer communities through the reduction of crime and the promotion of safety.

Objectives

Use information, evidence, community and partner intelligence to set strategic and local priorities to reduce crime and ensure RCSP partners meet their legal duties.

Provide up to date action plans to address strategic and local priorities.

Ensure young people are in a safe environment and engage and empower young people to prevent them from coming to harm either as a victim or perpetrator of crime.

Address inequalities in violence against women and girls and reduce incidents.

Tackle crime and disorder in specific areas of higher deprivation.

Strategic Priorities

Strategic Priorities have been set by a strategic assessment carried out in 2021. This was reviewed in 2023. The strategic assessment is carried out by Warwickshire County Council Business Intelligence. It has identified through the analysis of a range of data the key areas the RCSP should focus on. A further strategic

assessment will be undertaken in 2024 to provide the CSP with reviewed strategic priorities set in 2025.

The Rugby CSP Strategic Priorities 2021 -2025

Young People Linked to Knife Related Violent Crime – Focus on urban wards. This fits in with serious violence duty and Strategy.

Personal Robbery – Focus on Urban Wards. This fits in with serious violence duty and strategy.

Retail Business Crime – Focus on shop lifting and make-off without payments.

Domestic Abuse – Focus on domestic violence and improving reporting. Fits in with VAWG Board strategy and DA Steering Group

Exploitation of Young People – Focus on vulnerability caused by substance misuse, homelessness and financial need. Fits in with Warwickshire Safe Guarding board and Exploitation sub group and action plan.

Hate Crime – Focus on all strands of community cohesion. Fits in with Hate Crime Partnership strategy and action plan.

Cross cutting themes

- Drug and Alcohol
- Reducing Reoffending
- Cyber crime

Local Priorities

The Local Priorities have been set through emerging trends and intelligence received by partners and sub groups and consultation with residents and the community.

Youth Intervention – Post pandemic we saw a rise in ASB and young people putting themselves at risk of being victims or perpetrators of crime. There will be a focus on working with young people and communities to prevent young people ending up being victims or perpetrators.

Violence Against Women and Girls – Following surveys in Rugby it was identified that Women and Girls do not feel safe in Rugby and have often been victims of harassment etc.

Area Specific Action Benn Ward – This will target community safety in specific areas where risk factors of crime are higher due to deprivation and lower social and economic opportunities.

Delivery Model

The RCSP will deliver the aims and objectives through the subgroups. Appendix 2 shows the governance structure for the CSP and how the subgroups feed into the RCSP Board. The RCSP is signed up to the Warwickshire Community Safety Information Sharing Protocol Agreement as are all members of the sub groups.

Priority Action Group and Action Plans

The Priority Action Group (PAG) will bring together all the partnership working carried out in relation to the CSP priorities and develop action plans around planned interventions. The PAG will identify work being undertaken through other meetings and Countywide Delivery plans to ensure that all work is included in the action plans. The PAG will also identify any gaps and develop interventions to be included on the action plans. The Action Plans will be scrutinized by the CSP Board. The action plans will be reviewed quarterly by the PAG and the CSP Board.

Youth Intervention

The Youth Intervention meeting is multiagency and identifies young people through their behaviour or vulnerability identified by partners be that Community Wardens, Schools, Police or other partners and assess their individual situation and then refers that young person or group of young people to numerous agencies for specialist support, including referrals to Compass (for young people who have drug issues); referrals to 'Ontrack' (part of RBC sports and recreation) for one-to-one support where individuals are otherwise disengaged or diversionary activities such as hair and beauty or art placements at local training centres. Also referrals are made to Warwickshire Youth Justice Service for young people who are moving beyond ASB and into criminality, exploitation, and county lines. Other interventions include visits to parents, antisocial behaviour contracts and banning orders from youth groups to make young people or their parents responsible for their actions and provide support for young people to steer them away from adverse behaviour.

Dealing with ASB through Youth Intervention not only tackles the immediate issue but also helps protect potentially vulnerable young people who, without intervention, could become involved in more serious criminal activity and become involved as a victim or perpetrator of serious violence.

ASB Case Management

The ASB Case Management meeting is a multiagency meeting that identifies high risk victims of ASB through a range of partners using the ASBRA scoring process. New cases are discussed and interventions and actions are identified to help stop the ASB of the perpetrator and protect the victim. The meeting also discusses the ongoing cases and actions to ensure interventions have taken place and progress is

being made to resolve the case. Interventions include use of independent conflict management and mediation service, warning letters, CPNs, eviction, injunctions and criminal prosecutions.

Problem Solving Plan Meeting

The Problem Solving Plan Meeting (PSPM) is a multiagency meeting that works on specific local problems that arise through information from the Community, local crime data and partner intelligence. It uses specific problem solving techniques to take a holistic approach to problems. These Problem Solving Plans are reviewed and updated at monthly meetings with actions until the specific issues are resolved. The meeting also instigates Environmental Visual Assessments in areas where specific issues have been reported. The PSPM often feeds into the Action Plans for the CSP Strategic Priorities and the Local Priorities.

Safer Warwickshire Partnership Board and Delivery Groups

There are a number of Boards, Delivery Groups and subsequent action plans that will discharge some of the CSP duties. These will be linked into the Rugby CSP action plans. See appendix one.

Community Engagement

RCSP will ensure that engagement with residents, communities and businesses occurs to ensure that we identify local priorities, identify interventions for action plans and promote work that is already occurring.

This engagement will take place through a number of formats ranging from resident surveys (Borough wide and specific to particular locations), Environmental Visual Assessments, Member engagement and Community Safety Events.

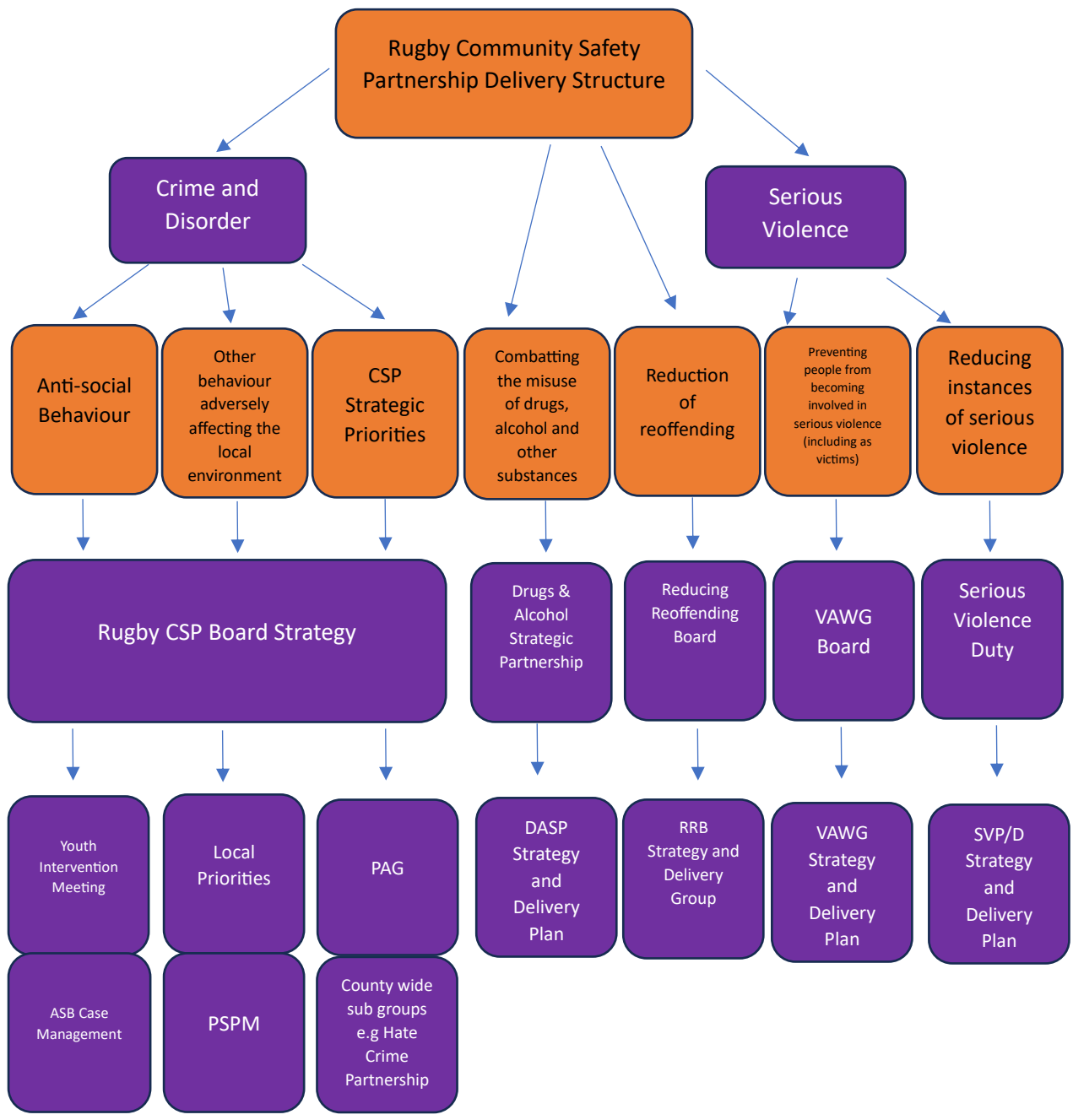
Communications will be coordinated between partners.

Outcomes

The key outcomes of success will be:

- 1) Development of a Youth Intervention strategy building on work that has already begun.
- 2) Reduction of youth ASB across a 12 month period.
- 3) Reduction of youth related violent crime.
- 4) Have action plans for addressing strategic priorities.
- 5) Reduce incidents of VAWG related crime.
- 6) Improve the feeling of safety across the Borough for women and girls.
- 7) Identify and reduce crime in identified areas for area action.

Appendix 1 Rugby CSP Delivery Structure



Appendix 2 RCSPB Governance Structure

